

heper⁺

"For my part I know nothing with any certainty, but
the sight of the stars makes me dream."

Vincent van Gogh

G

L

G

T

LIGHT

H

L

T

I

I

04	OUR STORY
14	OPTICAL TECHNOLOGIES
19	ALCOPOLE
22	PRODUCTS INDEX
26	LIGHT COLUMNS
46	POLE-TOP LUMINAIRES
56	BOLLARDS
80	PROJECTORS & FLOODLIGHTS
88	IN-GROUND LUMINAIRES
96	WALL MOUNTED LUMINAIRES
120	CEILING MOUNTED LUMINAIRES
126	HANDRAIL LUMINAIRES
128	ROAD LIGHTING LUMINAIRES
134	TUNNEL LIGHTING LUMINAIRES
138	CATENARY LUMINAIRES
142	REACH US



There is no denying that the invention of electric light was a milestone in human history.

Especially in the sense of changing people's daily lives and how they are feeling, behaving, and interacting after sundown. In today's modern world, people are outside more, communicating with one another, feeling safer in stranger environments, having the chance to appreciate beauty at all times, all thanks to lighting.



At Heper, we are constantly inspired by the connection that exists between light and society.

In fact, this inspiration has been the main driving force in our three-decade-long journey of developing high-grade products that enhance people's lives.



Designed with the principles of Dark Sky lighting in mind

HEPER luminaires minimize light pollution by directing light downward where it's needed most, thus preserving the natural night environment and reducing energy wastage. Our DarkSky luminaires combine cutting-edge LED technology with precision engineering to deliver optimal brightness and efficiency while ensuring compliance with dark sky regulations.



We believe lighting cannot be perceived solely for human beings.

At the other end of the equation, there are thousands of other species and nature itself. As a globally conscientious company, we understand the positive benefits of artificial lighting are primarily limited to people. Though challenging, we must acknowledge that unnatural light brings more harm than good for most living creatures. That's why at Heper our approach holds environmental values at its core.



Environmental values are driven by our motto of “light should only be where it needs to be. If it is anywhere else, it is wasteful and harmful”.

In our quest of bringing value adding solutions to society while respecting nature, we vow to continue working relentlessly to create products that will make a difference through design, sustainability and innovation. At Heper, we are dedicated and passionate of a better tomorrow and improving life thru light.

We are proud to announce that we are committed to making UN’s principles part of the strategy, culture, and day-to-day operations of our company.

With this step, we are demonstrating our intent to support the United Nations Sustainable Development Goals and to engage in collaborative projects which advance the broader development of the United Nations Sustainable Development Goals (SDGs), which are aligned with our own values.

UN Sustainable Development Goals (SDG) are an urgent call for action to recognize ending poverty and other deprivations, improving health and education, reducing inequality, and spur economic growth – all while tackling climate change and working to preserve our oceans and forests.

We have identified six SDGs that we commit to supporting the most through our own actions. They underlie our sustainability strategy to contribute to a more sustainable future through our technologies and services. We believe that to achieve our aims, it is vital that we think of all our resources as finite, something to preserve and sustain and reuse where possible while at the same time enhancing performance, increasing efficiency, and reducing waste. All the above are manifested in our core values.

We believe in a future where the right use of the best available technology, coupled with the right use of light will enable us to achieve our aim of “Improving Life #thru light”.

<p>4 QUALITY EDUCATION</p>	<p>5 GENDER EQUALITY</p>	<p>7 AFFORDABLE AND CLEAN ENERGY</p>
<p>8 DECENT WORK AND ECONOMIC GROWTH</p>	<p>9 INDUSTRY, INNOVATION AND INFRASTRUCTURE</p>	<p>12 RESPONSIBLE CONSUMPTION AND PRODUCTION</p>



At HEPER, our philosophy revolves around the importance of the right use of light. We believe in the concept of “less is more” when it comes to utilizing artificial light sources.

As a lighting manufacturer, despite being utterly passionate about the value light adds to human lives and social dynamics, we also fully grasp that these benefits are for humans primarily. In line with this belief we took on the mission to constantly develop efficient lighting technologies starting with optics. When we talk about efficiency we mean directing the right amount of light in the right direction. Over the years we developed unique optical technologies that control the light in the best way possible, allowing us to send it where it needs to be and no place else. By preventing uplight and minimizing stray light, every Heper luminaire comes equipped with optical technologies that truly bring environmental wellness to the forefront.

Another element we are passionate about is how lighting impacts the quality of life for human beings. Lighting plays an undeniable role in our every day life. From the basic needs such as safety to the stimulation of complex feelings through unique lighting design. We also believe the level of impact it possesses is proportional to the quality of light. That is why we will always work relentlessly to offer products with exquisite optics, optimal light distribution, a high level of uniformity, reduced glare, and tight color consistency. Apart from the optics, every HEPER product is equipped with high-end components such as drivers to provide the optimum dimming characteristics while reducing flickering.



In the light of the technological advancements over the years, the products we offer did not only get longer-lasting and more efficient but also smarter.

One of the main benefits of utilizing smart technologies in a broader spectrum will be related to open public spaces. Implementing smart devices will make it possible to collect and use data to enhance public safety, use resources more efficiently, add value to social and environmental sustainability, provide the public with functional services, and so on. Being an existing element in open public spaces, lighting poles and fixtures can be interpreted as standby infrastructure to introduce smart capabilities to modern cities of the world. Each skillful lighting product can be identified as a "node" to transfer data and even cover larger cities. While doing that, they extinguish the need for a secondary infrastructure to house those smart components, paving the way to maintain the architecture and character of beloved

cities. Let us give an example to paint a clearer picture. With the implementation of a single HEPER product family, it can be possible to save substantial energy with a smart control system; provide public internet with implemented WAPs; enhance public safety with better lighting, gunshot detectors, and emergency buttons; monitor air pollution with sensors; monitor and minimize light pollution with the utilization of PIR motion sensors and smart dimming capabilities, and so on. Possibilities are indeed endless as we will be continuing to remain in close contact with technological advancements. We are also working hand in hand with leading control systems manufacturers to allow widely used components to be used within HEPER products. As HEPER, we are thrilled to help shape the future and we hope that you are too!

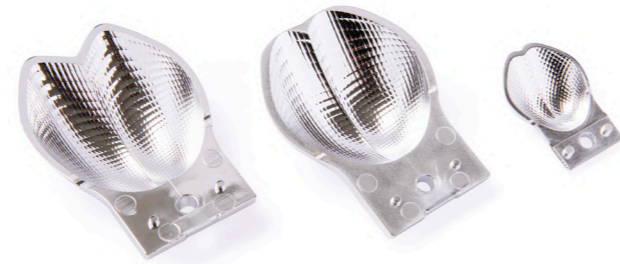


With our in-house lighting lab, we have full control over our optical development processes from design to validation. We have an active role in luminaire production with our lighting laboratory, starting from the development processes that determine the performance and safety characteristics of our luminaires and helps us to improve optical performance, electrical, thermal and mechanical safety of our luminaires.

HEPER light lab is equipped with state-of-the-art devices allowing us to utilize them in our quest to bring out the best product possible. Being fully accredited, we can carry out tests in accordance with IEC, EN, and UL standards in the HEPER laboratories.

Dyno

DYNO optical system with special micro-faceted reflector technology, provides various light distribution types with different sizes depending on optical center differences and it ensures longitudinal glare control with optimized cut-off. Forward through distribution allows throwing the light 1x distance in the horizontal position and 6x distances in the vertical position. DYNO is more suitable for UV sensitive environments since it does not emit any UV beams. In addition to excellent uniformity and clarity, surface washing applications with DYNO module results in zero glare for intended purposes due to hidden light source alignment.



Hybrid

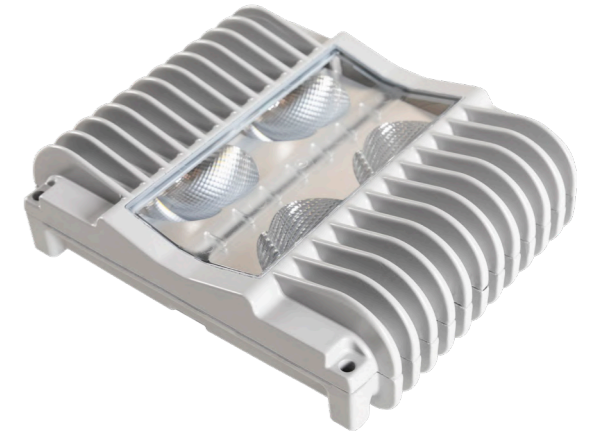
HEPER's HYBRID LED Module; a reflector and a lens combined to make out the perfect beam control with several beam angles and different light distributions. The idea is here to while having the beam control with minimizing the scattering. Redirecting the light twice, HYBRID module achieves to present optimised beam and field angles. This technology is amazing for accent lighting, highlighting objects and surface grazing applications.



Milestone

HEPER's patented Milestone is a module with high power LED chips, versatile reflectors that provide uniform light distribution and indirect lighting. Milestone can send the light to wider spaces because of the reflectors and since the light source is under reflectors, there is no direct eye contact with the light source which makes Milestone good at glare management and the ability to align the chips upwards allowed us to handle the heat management problem from a different perspective. Whole heat transfer happens right under the surface, it allows it to work with high performance under all conditions.

With its modular design Milestone optical system allows for easy replacement of components and modules. This not only makes maintenance and upgrades simpler but also helps to extend the life cycle of the system, which truly supports our sustainability approach.



AFX Module

HEPER's AreaFlex (AFX) Module is a highly flexible lens-based optical technology, AFX answers to the needs of complex lighting projects. AFX can be used in different layouts to maintain optical integrity throughout a project and of course, flexible optics give AFX the ability to provide various light distributions in different output levels. With its modular design, AFX optical system allows for easy replacement of components and modules. This not only makes maintenance and upgrades simpler but also helps to extend the life cycle of the system, which truly supports our sustainability approach. Considering all these features,

AFX is a total game changer!





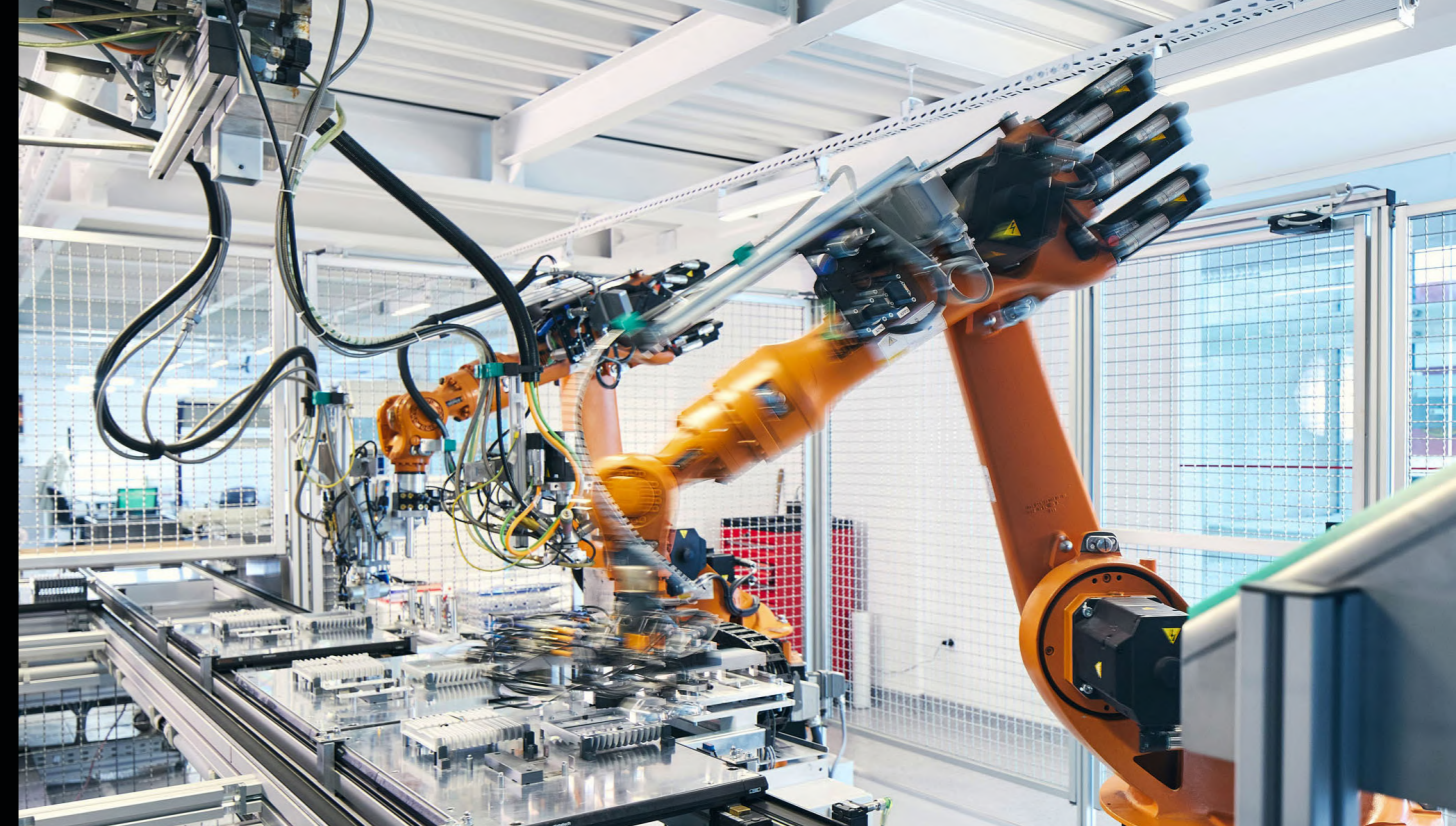
Housing

The high-quality nature of every HEPER product starts with the materials. The majority of the housings of our products are composed of high corrosion-resistant, marine-grade aluminum. Under HEPER's expertise, different aluminum alloys are turned into die-cast and extruded parts to shape the main body of our lighting fixtures and poles. Aluminum extrusions are lightweight, strong, and highly corrosion-resistant. They also provide excellent thermal management. Aluminum alloys for extrusion are also amongst the most sustainable materials as they can be recycled infinitely with no degradation in properties. Aluminum die-casting alloys are also lightweight, and they possess high dimensional stability for complex part geometries and thin walls. Same as extrusions, die-cast aluminum alloys are also fully recyclable and reusable in production.

Apart from aluminum, low copper content stainless steel alloys are also used within the housing of HEPER products. Stainless steel is an excellent option for use in severely corrosive environments, and it is the go-to material for our tunnel and in-ground lighting products. Low carbon content in stainless steel also eliminates carbon precipitation during the welding process. The result is a highly corrosion-resistant and long-lasting product for harsh environments.

Finishing

Finishing is a vital stage during the manufacturing process as it is related to both the quality and aesthetics of a product. Over the years, we perfected the finish processes for HEPER products to not only look appealing but also help improve our product qualities even further. In addition to 6 standard finish options, most HEPER luminaires can be available in custom finishes at an added minimal cost. Multi-stage coating is the optimal process for a product with utmost finish quality and durability. Our finishing process is multi-staged. First, Type I (Hexavalent) or Type II (Hex-Free) chromate coating is applied depending on the product's material characteristics. This process is followed by electrostatic powder coating, which provides the product with its final color and texture. With many standard finish options, HEPER products are as visually appealing as they show excellent resistance to abrasion, corrosion, impact, and chemical effects.



Gaskets

Every HEPER product is designed to provide maximum performance regardless of environmental conditions. Therefore, one of our primary goals is to make products with high ingress protection ratings. To achieve this, the gaskets used in HEPER products are skillfully designed, and materials are selected carefully. In many products, EPDM rubber gaskets are used as they offer a variety of benefits, such as long-lasting sealing capabilities over a wide range of temperatures. In some of our products, we also use silicone, liquid silicone, silicone rubber, and liquid gaskets as they provide further flexibility.

Impact resistance is another vital property of a high-quality lighting product. Extra-clear tempered safety glasses are used in HEPER products to ensure high impact resistance without interfering with the quality of the light. The diffusers we use contain bio-based polycarbonate enriched with the bisphenol-A component in their structure and provide protection against UV rays.

Lens & Reflectors

The quality of the components within the optical systems is another essential property of a high-quality lighting product. HEPER products contain reflectors or lenses as their main optics. High-reflectance aluminum coating is used within the multifaceted reflectors, and PMMA with high optical efficiency is used for the lenses. As a result, every HEPER product comes equipped with long-lasting and high-performing optics.

Electronic Components

HEPER products also come equipped with the highest quality, certified electrical components, such as LED chips that offer superior effectiveness and LED drivers that provide consistent output even under varying input voltages and temperatures and have protection circuits that guard against overvoltage and thermal overload. Cables are flexible, halogen-free, and oil and weatherproof. Additionally, high IP-rated connectors, which provide protection against dust and high-pressure water jets, are crucial in choosing components that are built to withstand harsh outdoor conditions. The fasteners used in HEPER products are also stainless steel alloys with the utmost corrosion resistance characteristics.



Robust, Safe, Clean

Alcopole is our brand offering a complete pole solution that is hardwearing & environmentally friendly.

Alcopole is our brand for environmentalist aluminum poles. Skillfully representing HEPER's experience and engineering capabilities, environmentalist aluminum poles in every shape and size are manufactured in HEPER's pole manufacturing facility. Opting for green solutions is one of the most critical challenges of today's manufacturers. Being 100% recyclable with no downgrading of its qualities makes aluminum a tremendous clean material.

Alcopole promises long lifetime through corrosion resistant, maintenance free, lightweight structure of aluminum. Beside quick installation and low assembly costs, Alcopole stands out improved safety on the roads thanks to the absorbing feature of aluminum. Alcopole is your disposal with not only standard poles but also creative solutions to meet your needs.





Architectural & Landscape

Projectors & Floodlights



Bollards



Pole-top luminaires

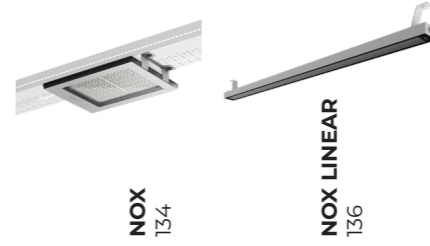


Light columns



Technical

Tunnel lighting luminaires



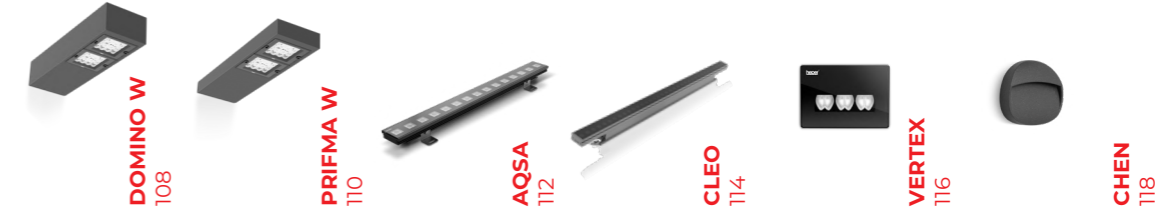
Road lighting luminaires



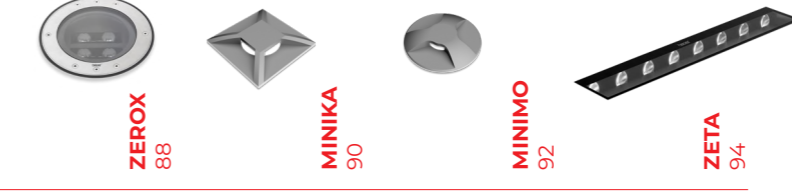
Ceiling mounted luminaires



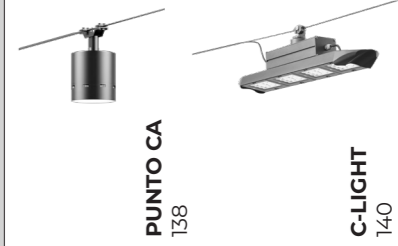
Wall mounted luminaires



In-ground luminaires



Catenary luminaires



Handrail luminaires



improving life **thru**light



With its sleek and futuristic design; TRIAN, redefines modern aesthetics thanks to its cutting-edge lighting solution while providing unparalleled illumination. Modularity and functionality combine to bring the next evolution in lighting technology.

TRIAN

Contemporary, Practical and Flexible Light Column Family

- Equipped with HEPER's AreaFlex (AFX) module
- Double layout configuration for further flexibility
- Easy installation and maintenance with modular structure
- Modular structure allowing seamless integration





Mix and match type lighting and smart components modules achieve endless possibilities for URBAN UNITS family.

URBAN UNITS

A Light Column Family Redefining Urban Life

- Top module equipped with HEPER's Dyno (DYN) module or high efficiency LED chips with flexible lens optics
- 360° rotatable mix-match type light and connectivity modules
- Scalable and expandable product family
- Easy installation and maintenance with modular structure
- Standby solution for complete smart city applications





With its plain look and low glare optics, VLORA is a reliable choice for exterior site lighting applications.

VLORA

Reliable and Sturdy Light Column Family

- Equipped with high-efficiency and long-lasting LED light source
- Efficient LED technology with high transmittance lenses
- Minimized stray light with specially made UV-stable diffuser
- Simple design that blends in with different types of architecture
- Easy installation and maintenance





VERTEX provides uniform light distribution with unique reflector technology and glare reduction with hidden light source.

VERTEX

Functional and Sleek Light Column Family

- Equipped with HEPER's Dyno (DYN) module
- Superior glare management with hidden light source
- Uniform light distribution with advanced reflector technology
- Different height options and matching bollard to complement high-end architectural projects
- Minimalistic design to blend in with different types of architecture
- Modular structure allowing seamless integration



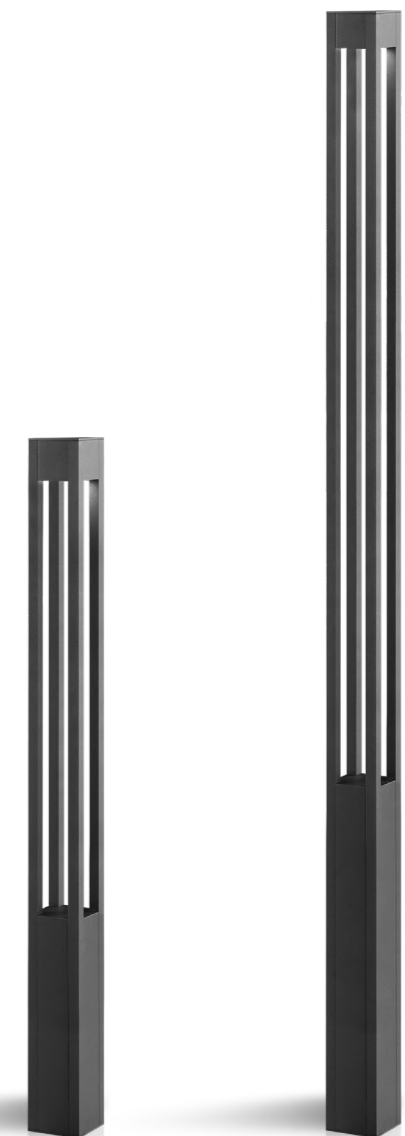


With its square frame, matching bollard options, and four-way light distribution NORMA family is a reliable choice for contemporary architectural projects.

NORMA

Elegant and Sturdy Light Column Family

- Minimized glare with hidden light source
- Four-way light distribution to illuminate areas and pathways while adding a unique effect
- Different height options and matching bollard to complement high-end architectural projects
- Minimalistic design to blend in with different types of architecture
- Easy installation and maintenance





With its round frame, matching bollard options, and three-way light distribution POLSO family is a reliable choice for contemporary architectural projects.

POLSO

Elegant and Sturdy Light Column Family

- Equipped with LED light source
- Minimized glare with recessed light source
- Three-way light distribution to illuminate areas and pathways while adding a unique effect
- Different height options and matching bollard to complement high-end architectural projects
- Minimalistic design to blend in with different types of architecture



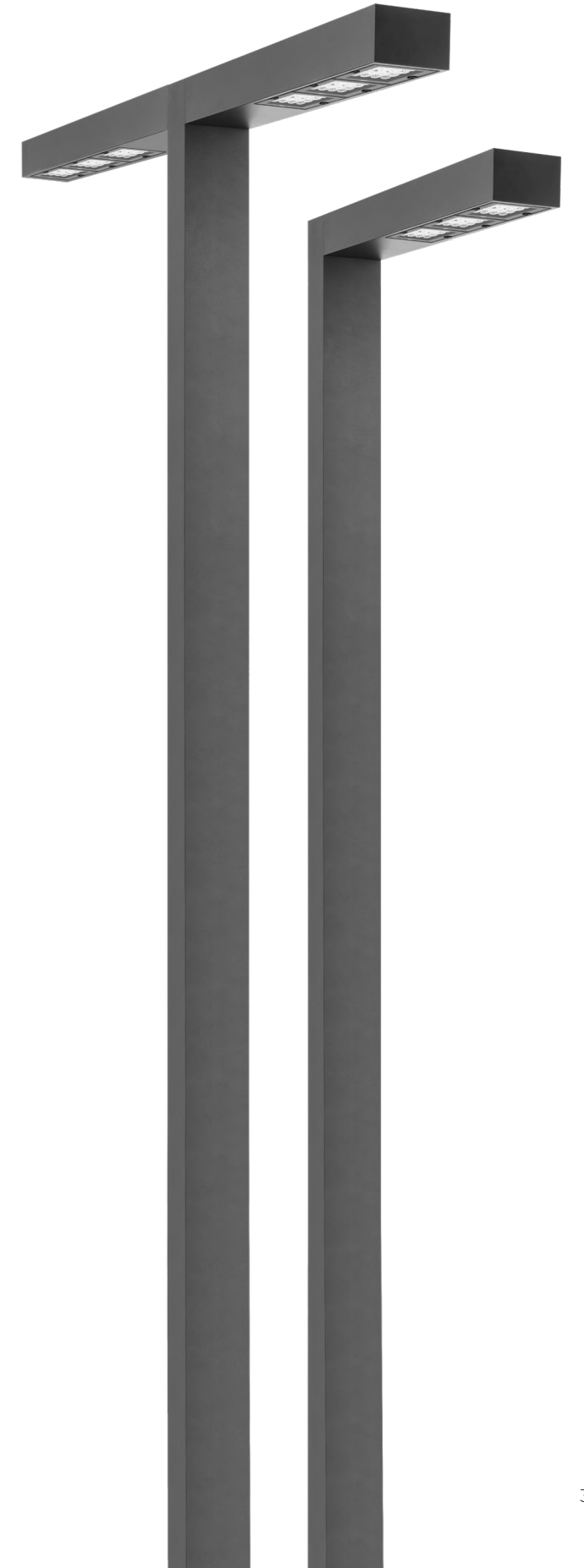


Strong characteristics, flexible optics, and modular structure make DOMINO stand out for contemporary architectural projects.

DOMINO

Robust and Scalable Light Column Family

- Equipped with HEPER's patented Milestone EVO (ML EVO) or AreaFlex (AFX) module
- Superior glare management with hidden light source
- Indirect lighting with reflector technology
- Flexible light distribution options from Type I through Type V (AFX)
- Uniform lighting distribution through multifaceted reflectors (ML)
- Double layout configuration for further flexibility
- Superior thermal management with upward aligned LED chips
- Easy installation and maintenance with modular structure
- Approved by the DarkSky International (AFX)



**DARKSKY
APPROVED**
Reduces light pollution
Certified by DarkSky.org

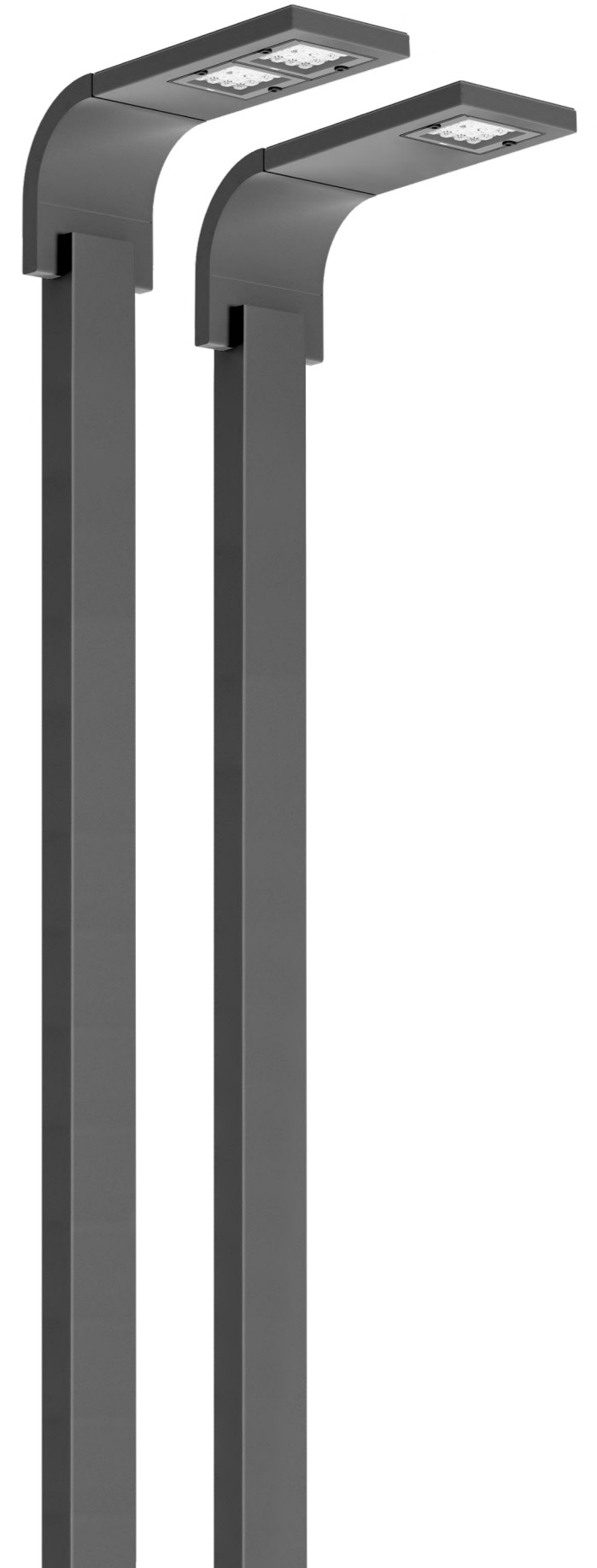


Unique design, flexible optics, and modular structure make TILA family stand out for contemporary architectural projects.

TILA S

Elegant and Scalable Light Column Family

- Equipped with HEPER's patented Milestone EVO (ML EVO) or AreaFlex (AFX) module
- Minimized glare with hidden light source (ML)
- Flexible light distribution options from Type I through Type V (AFX)
- Indirect lighting with reflector technology (ML)
- Uniform lighting distribution through multifaceted reflectors (ML)
- Superior thermal management with upward aligned LED chips (ML)
- Easy installation and maintenance with modular structure



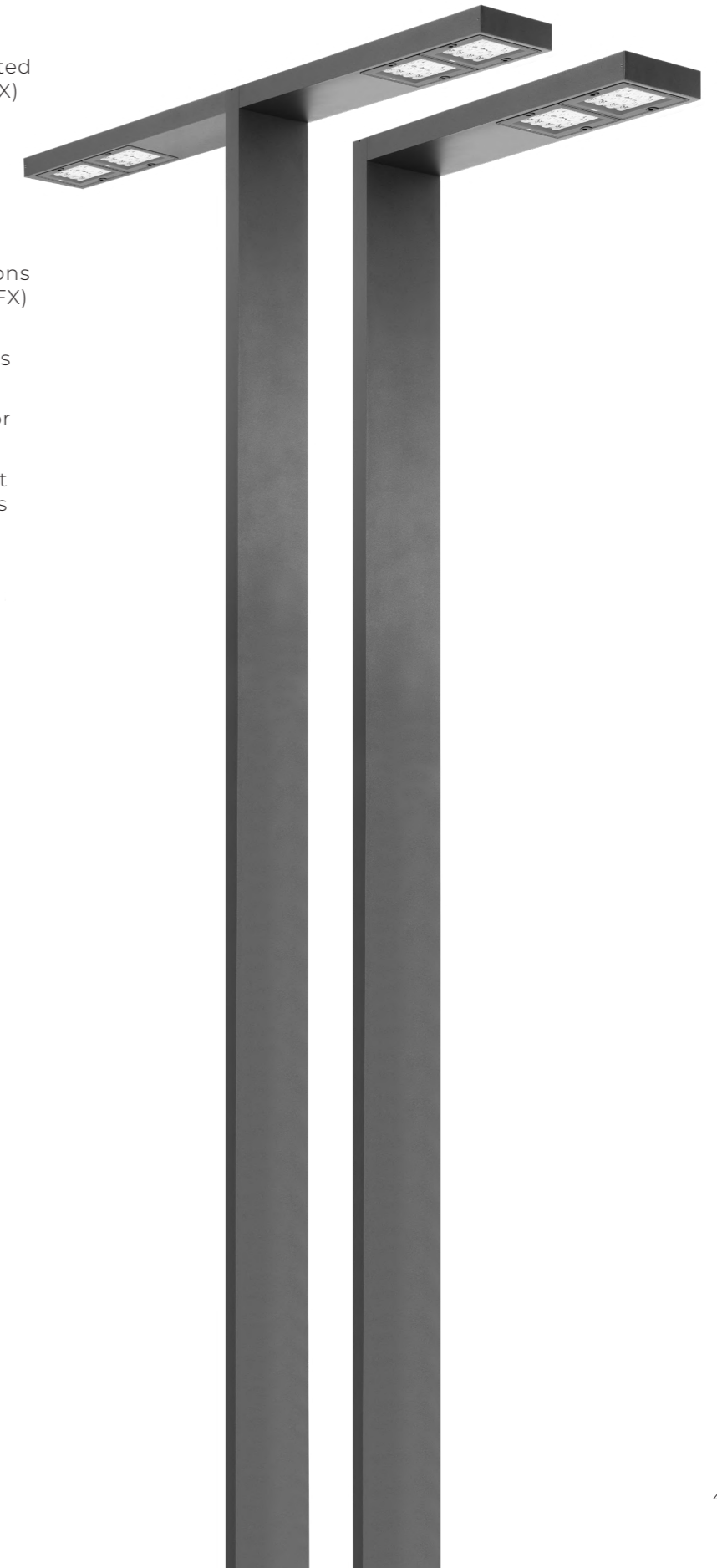


Clean lines, flexible optics, and modular structure make PRIFMA stand out for contemporary architectural projects.

PRIFMA

Scalable and Sleek Light Column Family

- Equipped with HEPER's patented Milestone (ML) or AreaFlex (AFX) module
- Minimized glare with hidden light source (ML)
- Indirect lighting with reflector technology
- Flexible light distribution options from Type I through Type V (AFX)
- Uniform lighting distribution through multifaceted reflectors (ML)
- Double layout configuration for further flexibility
- Superior thermal management with upward aligned LED chips (ML)
- Easy installation and maintenance with modular structure
- Approved by the DarkSky International (AFX)



**DARKSKY
APPROVED**
Reduces light pollution
Certified by DarkSky.org

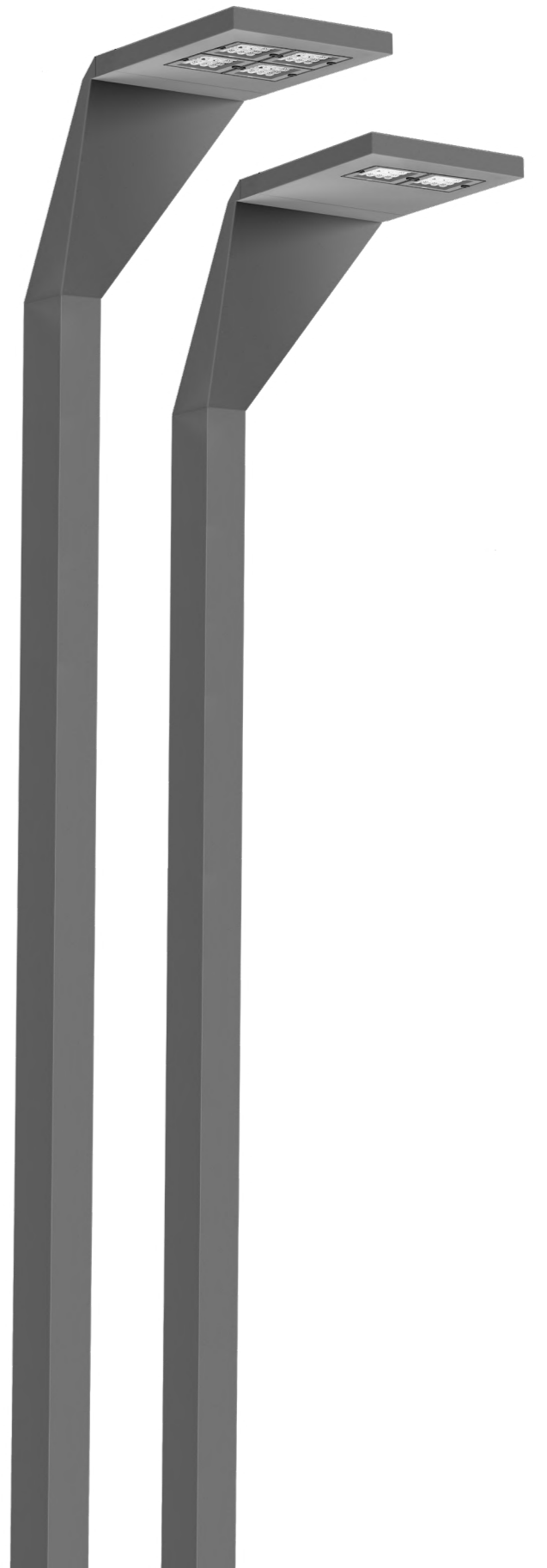


Award-winning design, flexible optics, and modular structure make WINGS stand out for contemporary architectural projects.

WINGS

Unique and Scalable Light Column Family

- Equipped with HEPER's patented Milestone EVO (ML EVO) or AreaFlex (AFX) module
- Minimized glare with hidden light source (ML EVO)
- Flexible optics give the ability to provide various light distributions in different output levels (AFX)
- Indirect lighting with reflector technology (ML EVO)
- Superior thermal management with upward aligned LED chips (ML EVO)
- Easy installation and maintenance with modular structure





The distinctive attributes of PRIFMA shine in contemporary architectural ventures, characterized by its streamlined design, adaptable optical features, and modular framework. These elements combine to set PRIFMA apart as an exceptional choice.

PRIFMA PT

Versatile and Stylish Pole-top Family

- Equipped with HEPER's AreaFlex (AFX) module
- Flexible light distribution options from Type I through Type V (AFX)
- Double layout configuration for further flexibility
- Easy installation and maintenance with modular structure



**DARKSKY
APPROVED**
Reduces light pollution
Certified by DarkSky.org



With flexible mounting options and different optics, RHINO stands out as an option for area and architectural lighting applications.

RHINO

Flexible and Versatile Pole-mount Family

- Equipped with HEPER's patented Milestone (ML), AreaFlex (AFX) or Hybrid (HYB) module
- Minimized glare with hidden light source (ML)
- Flexible light distribution options from Type I through Type V (AFX)
- Options for different type of optics
- Indirect lighting with reflector technology (ML)
- Uniform lighting distribution through multifaceted reflectors (ML)
- Angle-adjustable head
- Flexible for various types of uses
- Easy installation and maintenance with modular structure
- Approved by the DarkSky International (AFX)



**DARKSKY
APPROVED**
Reduces light pollution
Certified by DarkSky.org

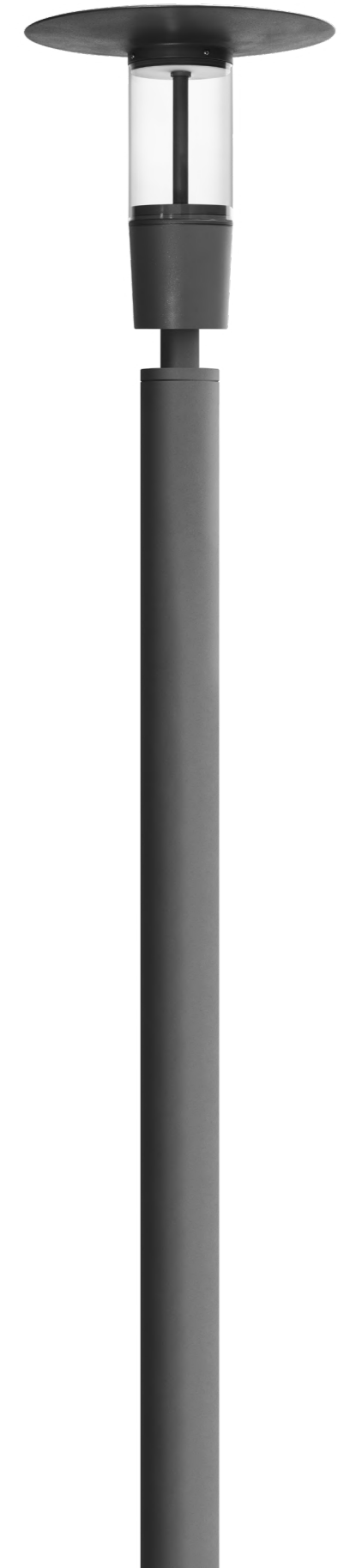


PIRUS is a luminaire able to provide maximum visual comfort with its optical system DYNO, known for minimizing glare and distributing the light symmetrically making PIRUS perfectly adapt to the architecture of cities with its flexible structure. The PIRUS is also available as a pendant luminaire. This makes it preferably suited for constructively and sensationally illuminating various areas.

PIRUS

Matchless and Contemporary Pole-top Family

- Equipped with HEPER's Dyno (DYN) module
- Minimized glare with hidden light source
- Flexible use with different light distribution and output options
- Uniform light distribution with specially designed reflectors
- Surface or pole-mount options with multiple layout alternatives
- Unique design combining modern and traditional touches
- Easy installation and maintenance





With the combination of long-life and maximum efficiency optics coming into play with a modern aesthetic structure and strong engineering fundamentals, KREIS becomes obscure yet still supports the illumination tasks for modern cities and other open spaces.

KREIS

Highly Practical, Elegant, Aesthetic Post-top Family with Modern Design

- Equipped with high-efficiency and long-lasting LED light source
- Superior glare management with diffused glass
- Uniform light distribution with high level of operating efficiency
- Optimized thermal design resulting in longer life cycle
- Modern and elegant design creating a unique touch in exterior applications





Traditional yet contemporary looks combined with reliable optics make TERRA stand out for the illumination tasks for modern cities, parks, and other open spaces.

TERRA

High-performing Pole-top Family with Familiar Design

- Equipped with long-lasting high-power LEDs
- Minimized glare with top diffused glass
- Uniform lighting distribution with symmetric and asymmetric options
- Easy installation and maintenance



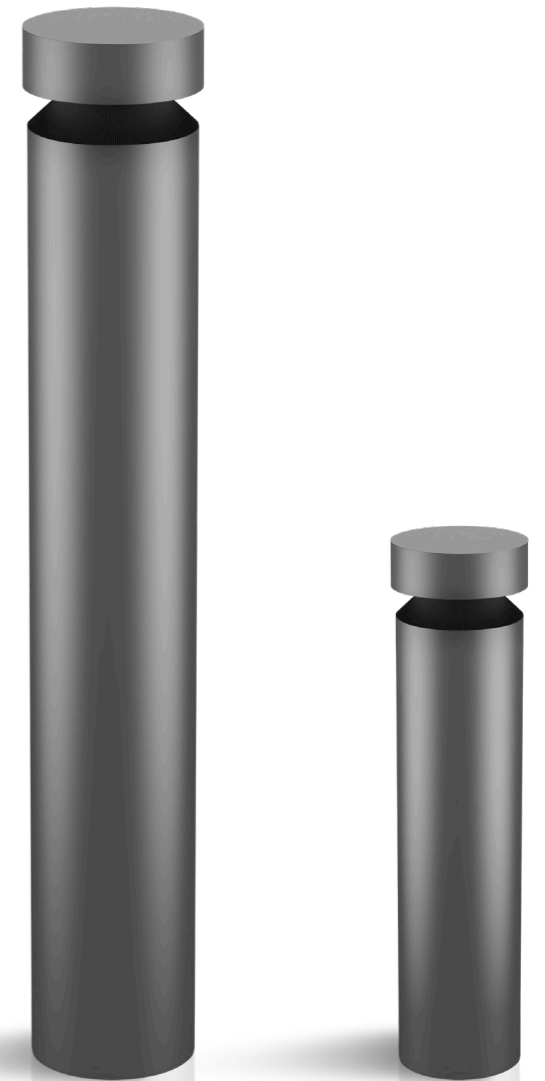


CORVUS, an urban-focused bollard, features a sleek design with a slim body concealing the light source, ensuring total visual comfort. Its special diffused glass provides uniform light distribution, as well as minimizing stray light.

CORVUS

Urban Elegance Meets Corvus Bollard Family

- Cost-effective and efficient LED technology
- Meets eye comfort with symmetrically optimized light distribution
- Equipped with high-efficiency and long-lasting LED light source
- Available in two body sizes of 150 and 200 diameters.
- Easy installation and maintenance
- Modern and elegant design, creating a unique touch in exterior applications





Clean lines, different light distribution options, and jaw-dropping optics make the DRAGO family stand out to illuminate pathways, landscaped areas, and other public spaces.

DRAGO

Sleek and Fascinating Bollard Family

- Equipped with HEPER's Dyno (DYN) module or high efficiency LED chips with flexible lens optics
- 1 to 6 light distribution ratio with no uplight (DYN)
- Minimized glare with hidden light source
- Indirect lighting with reflector technology
- Optimized linear forward or side throw options with full cut-off and minimized stray light
- Motion sensor & emergency kit options



**DARKSKY
APPROVED**
Reduces light pollution
Certified by DarkSky.org



SPARK is a product range designed for illuminating both building facades and landscapes. With its wide range of accessories, SPARK offers exceptional flexibility and versatility, making it suitable for various applications across different fields.

SPARK B

Modernized, Flexible and Multi-functional Bollard Family

- Equipped with high efficacy COB LED with long time reliability
- 5 different light distribution options from very narrow to wide
- Available in 2700K and 3000K with a color rendering index value of 90
- Anodized aluminum body with knurled surface improves the thermal management
- Easy locking system for fine tuning and aiming





SPARK is a product family that came into play for application in façade and landscape lighting. SPARK is a highly flexible and versatile product usable in different fields thanks to its rich accessories.

SPARK ST

Flexible, Elegant and Multi-functional Bollard Family

- Equipped with high efficacy COB LED with long time reliability
- 5 different light distribution options from very narrow to wide
- Available in 2700K and 3000K with a color rendering index value of 90
- Anodized aluminum body with knurled surface improves the thermal management
- Easy locking system for fine tuning and aiming
- 0°/+355° rotatable, 0°/+90° tiltable mechanism allows precise positioning of the light beam





Endless infrastructural opportunities is combined with exquisite illumination. URBAN BOLLARD is more than a bollard family for caravan parks and marinas and it will easily harmonize itself to your daily life.

URBAN BOLLARD

Multi-functional, Durable
and Elegant Bollard Family

- Equipped with HEPER's Dyno (DYN) module
- Hidden light source prevents direct eye contact and minimizes glare
- Dark-Sky friendly reflector based optics prevent uplight
- Extended flexibility with rotatable top module
- Extended functionality with components with ready-to-use GFCI outlet
- Easy installation and maintenance





Eye-catching design and unique optics with a light touch make TRIAN stand out to illuminate pathways, landscaped areas, and other public spaces.

TRIAN

Contemporary and Scalable Bollard Family

- Equipped with HEPER's Dyno (DYN) or AreaFlex (AFX) module
- Flexible optics give the ability to provide various light distributions in different output levels (AFX)
- Minimized glare with hidden light source
- Optimized linear forward light distribution option with full cut-off and minimized stray light
- Easy installation and maintenance
- Modern and elegant design creating a unique touch in exterior applications



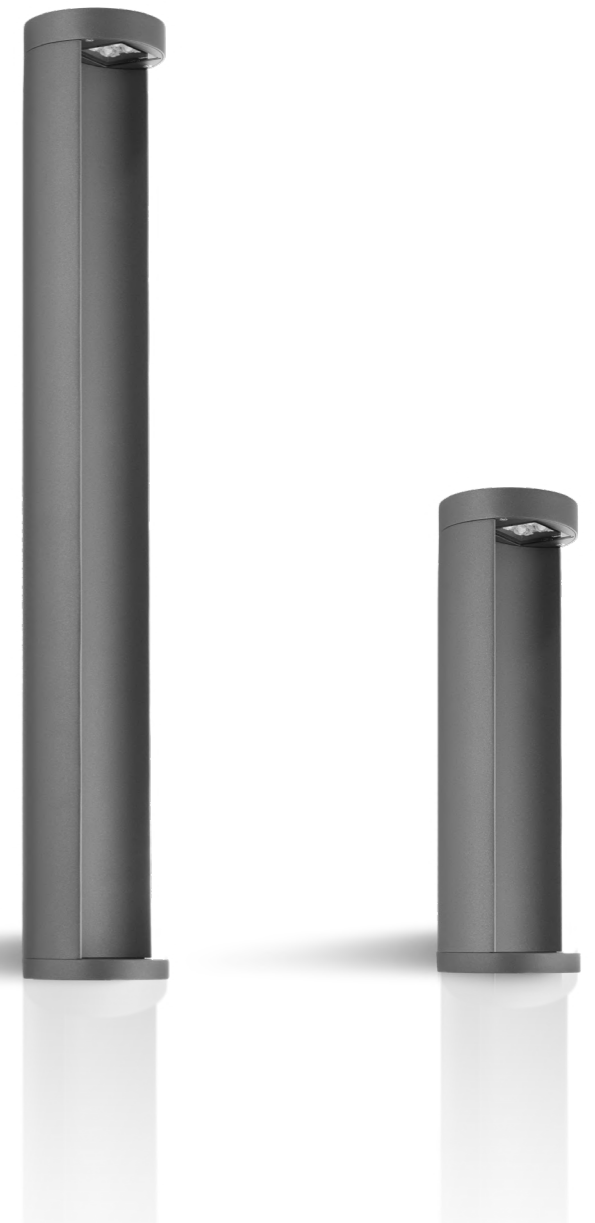


With its refined simplicity, LUMA bollard delivers controlled, glare-free light for vibrant and welcoming public spaces.

LUMA

Refined Simplicity,
Built for the City

- Equipped with HEPER's AreaFlex (AFX) module
- Minimized glare with hidden light source
- Flexible optics give the ability to provide various light distributions in different output levels (AFX)
- Optimized linear forward light distribution option with full cut-off and minimized stray light
- Easy installation and maintenance
- Modern and elegant design, creating a unique touch in exterior applications





Advanced optics and strong characteristics make the DOMINI family stand out to illuminate pathways, landscaped areas, and other public spaces.

DOMINI

Durable and Reliable Bollard Family

- Equipped with HEPER's AreaFlex (AFX) module
- Flexible light distribution options from Type I through Type V (AFX)
- Simple design that blends in with different types of architecture
- Single or double head layout options
- Approved by the DarkSky International (AFX)



**DARKSKY
APPROVED**
Reduces light pollution
Certified by DarkSky.org



With its round frame, matching column options, and three-way light distribution POLSO bollard is a reliable choice for pathways, landscaped areas, and other public spaces.

POLSO

An Elegant and Sturdy Bollard

- Minimized glare with recessed light source
- Three-way light distribution to illuminate areas and pathways while adding a unique effect
- Different height options and matching column to complement high-end architectural projects
- Minimalistic design to blend in with different types of architecture



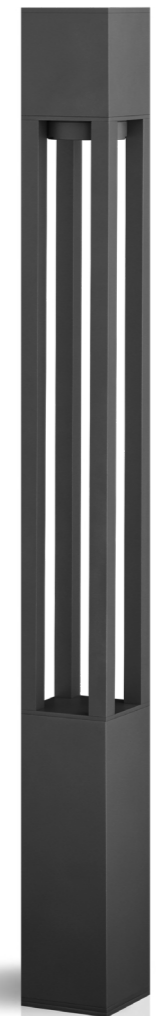


With its square frame, matching column options, and four-way light distribution NORMA bollard is a reliable choice for pathways, landscaped areas, and other public spaces.

NORMA

An Elegant and Sturdy Bollard

- Minimized glare with hidden light source
- Four-way light distribution to illuminate areas and pathways while adding a unique effect
- Different height options and matching column to complement high-end architectural projects
- Minimalistic design to blend in with different types of architecture
- Easy installation and maintenance





Modular structure, precise optics, and minimalist design make the VERTEX family stand out to illuminate pathways, landscaped areas, and other public spaces.

VERTEX

Functional and Sleek Bollard Family

- Equipped with HEPER's Dyno (DYN) module
- Superior glare management with hidden light source
- Indirect lighting with reflector technology
- Easy installation and maintenance with modular structure



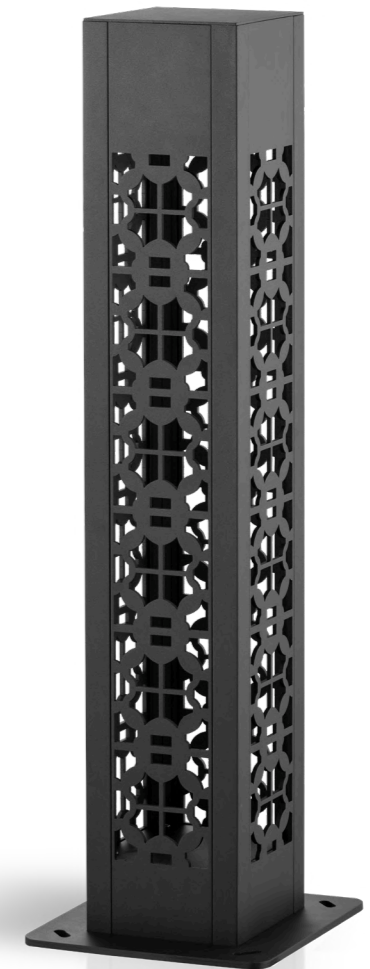


Square form factor, distinctive light effects, and a sturdy body make LIA stand out to illuminate pathways, landscaped areas, and other public spaces.

LIA

A Special Bollard with Unique Reflections

- Equipped with high-efficiency and long-lasting LED light source
- LED lighting solution with traditional appearance
- Optimized symmetrical uniform light distribution with a unique effect
- Minimalistic design to blend in with different types of architecture
- Sophisticated and decorative pattern on 4 sides
- Easy installation and maintenance





With its round form factor, advanced optics providing perfect beam control, and durable body PUNTO family stand out for highlighting architectural details in high-end projects.

PUNTO

Flexible and Reliable Floodlight Family

- Equipped with HEPER's Hybrid (HYB) module [S] [N]
- 4 different light distribution options from very narrow to wide
- Well-defined beam angles with reflector and lens combined (HYB)
- +60°/-30° vertically adjustable with aim locking set screw allowing fine-tuning
- Different sizes and lumen packages in order to comply with any project needs





With its square form factor, advanced optics providing perfect beam control, and durable body VEGA family stand out for highlighting architectural details in high-end projects.

VEGA

Flexible and Reliable Floodlight Family

- Equipped with HEPER's Hybrid (HYB) module [S] [N]
- 4 different light distribution options from very narrow to wide
- Well-defined beam angles with reflector and lens combined (HYB)
- +60°/-30° vertically adjustable with aim locking set screw allowing fine-tuning
- Different sizes and lumen packages in order to comply with any project needs





Small form factor and flexible optics make PINA F stand out for lighting applications in landscaped areas.

PINA F

Simple and Functional Floodlight Family

- Equipped with GU10 LED light source
- Offering up to 4 different beam angles from very narrow to medium
- +45°/-45° vertically adjustable with aim locking set screw allowing fine-tuning
- Easy installation and maintenance
- Surface mountable via a stationery base or spike (optional)





SPARK is a product family that came into play for application in façade and landscape lighting. SPARK is a highly flexible and versatile product usable in different fields thanks to its rich accessories.

SPARK

Flexible, Stylish and Multi-functional Floodlight Family

- Equipped with high efficacy COB LED with long time reliability
- 5 different light distribution options from very narrow to wide
- Available in 2700K and 3000K with a color rendering index value of 90
- Anodized aluminum body with knurled surface improves the thermal management
- Easy locking system for fine tuning and aiming
- 0°/+355° rotatable, 0°/+90° tiltable mechanism allows precise positioning of the light beam
- Multiple mounting options thanks to its rich accessories such as tree strap, wall bracket and spike





Multiple sizes, versatile light distribution options, and hardwearing characteristics make the "walk-over" ZEROX family stand out for uplighting, facade washing, and grazing applications in high-end architectural projects.

ZEROX

Robust In-ground Family with Impressive Optics

- 1 to 6 light distribution ratio with a uniform wall-wash effect (DYN)
- Equipped with HEPER's Dyno (DYN) or Hybrid (HYB) module
- Perfect beam control through multifaceted reflectors (HYB)
- Superior glare management with hidden light source (DYN)
- Extra narrow or medium beam angle options (HYB)
- Easy installation with in-ground housing and IP rated connectors
- Walk-over in-ground with high light output for installation in ground surfaces



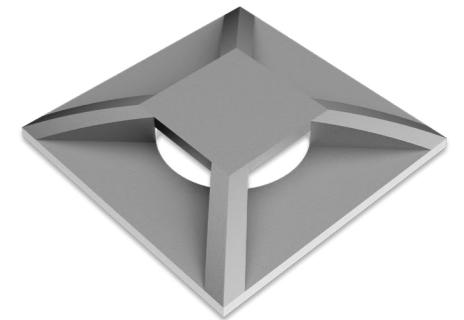
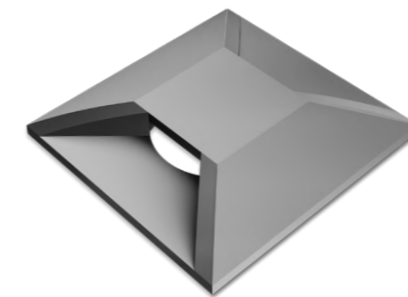


With its square form factor and four different lighting options, MINIKA family is a great choice to accentuate modern public spaces.

MINIKA

Simple and Variational In-ground Family

- Equipped with long-lasting high-power LEDs
- 4 different throw options
- Aluminum or stainless steel alternatives
- Easy installation with in-ground housing and IP rated connectors
- Vandal resistant compact design and nimble enough to fit in small spaces



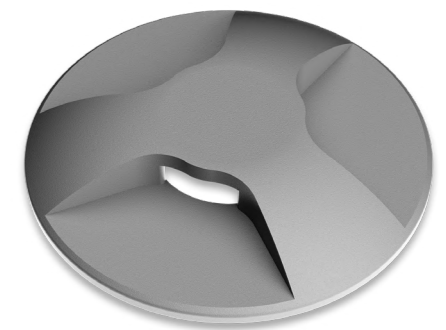
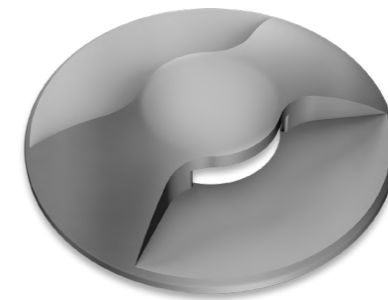


With its round form factor and four different lighting options, MINIMO family is a great choice to accentuate modern public spaces.

MINIMO

Simple and Variational In-ground Family

- Equipped with long-lasting high-power LEDs
- 4 different throw options
- Aluminum or stainless steel alternatives
- Easy installation with in-ground housing and IP rated connectors
- Vandal resistant compact design and nimble enough to fit in small spaces



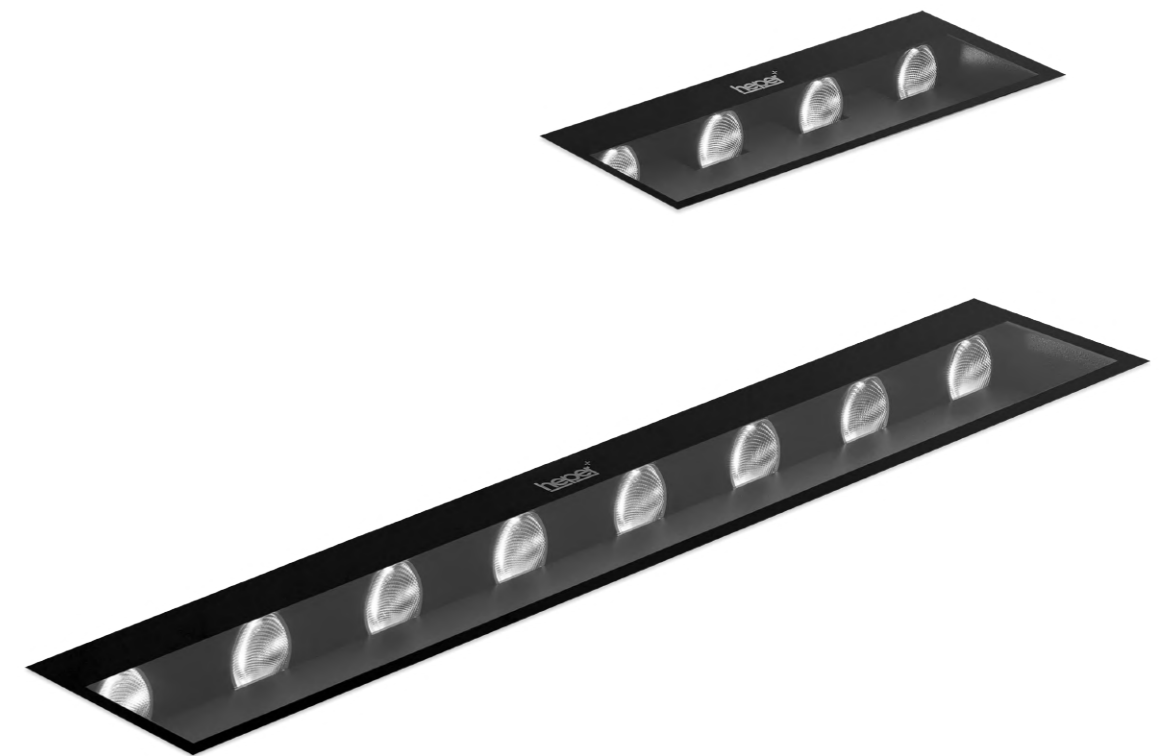


Multiple lengths, highly uniform light distribution, and hardwearing characteristics make the "walk-over" ZETA family stand out for facade washing applications in high-end architectural projects.

ZETA

Robust In-ground Family with Powerful Optics

- 1 to 6 light distribution ratio with a uniform wall-wash effect (DYN)
- Equipped with HEPER's Dyno (DYN) module
- Superior glare management with hidden light source
- Easy installation with in-ground housing and IP rated connectors





SPARK is a product range tailored for both façade and landscape lighting applications. With its exceptional flexibility and adaptability, it caters to a wide array of usage scenarios.

SPARK ST W

Flexible, Multi-functional and Adaptable Wall Mounted Family

- Equipped with high efficacy COB LED with long time reliability
- 5 different light distribution options from very narrow to wide
- Available in 2700K and 3000K with a color rendering index value of 90
- Anodized aluminum body with knurled surface improves the thermal management
- Easy locking system for fine tuning and aiming
- 0°/+355° rotatable, 0°/+90° tiltable mechanism allows precise positioning of the light beam



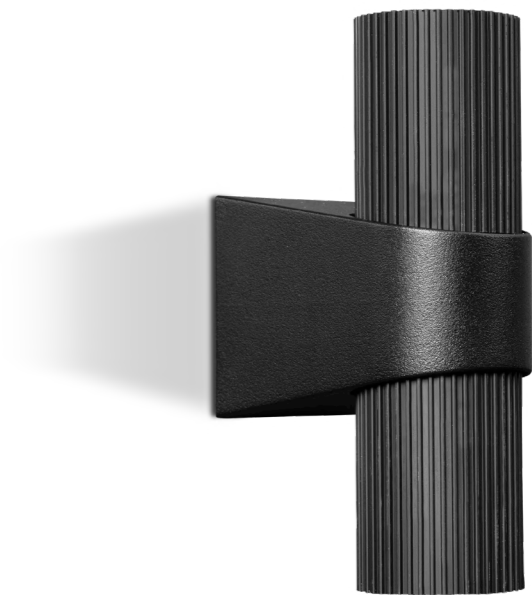


SPARK, a versatile product family designed for façade and landscape lighting applications, offers flexibility and adaptability across various fields, enhanced by its extensive range of accessories.

SPARK W

Adaptable, Elegant and Versatile Wall-Mounted Family

- Equipped with high efficacy COB LED with long time reliability
- 10 different light distribution options from very narrow to wide
- Available in 2700K and 3000K with a color rendering index value of 90
- Anodized aluminum body with knurled surface improves the thermal management
- The double layout allows up-and-down illumination with 4 different light distribution options from very narrow to wide





Minimalistic design, small form factor, and jaw-dropping optics make the DOGO family stand out for the illumination tasks of contemporary architectural projects.

DOGO

Small and Unique Product Family

- 1 to 6 light distribution ratio (DYN)
- Equipped with HEPER's Dyno (DYN) module or high efficiency LED chips with flexible lens optics
- Minimized glare with hidden light source
- Indirect lighting with reflector technology
- Optimized linear forward or side throw options with full cut-off and minimized stray light
- Motion sensor & emergency kit options



**DARKSKY
APPROVED**
Reduces light pollution
Certified by DarkSky.org



With its rectangular form factor, advanced optics, and durable body, VEGA W family is an excellent choice to add subtle touches in modern architectural projects.

VEGA S W

Flexible and Reliable Product Family

- Equipped with HEPER's Hybrid (HYB) module [S] [N]
- Perfect beam control through multifaceted reflectors (HYB)
- 4 different light distribution options from very narrow to wide
- Easy installation and maintenance





Small form factor and flexible optics make PINA W stand out to highlight architectural details in modern projects.

PINA W

Simple and Functional Product Family

- Equipped with GU10 LED light source
- 4 different light distribution options from very narrow to wide
- Easy installation and maintenance





With its round form factor, advanced optics providing perfect beam control, and durable body PUNTO W family stand out for highlighting architectural details in modern projects.

PUNTO W

Flexible and Reliable Product Family

- Equipped with HEPER's Hybrid (HYB) module [S] [N]
- 4 different light distribution options from very narrow to wide
- Well-defined beam angles with reflector and lens combined (HYB)
- Easy installation and maintenance



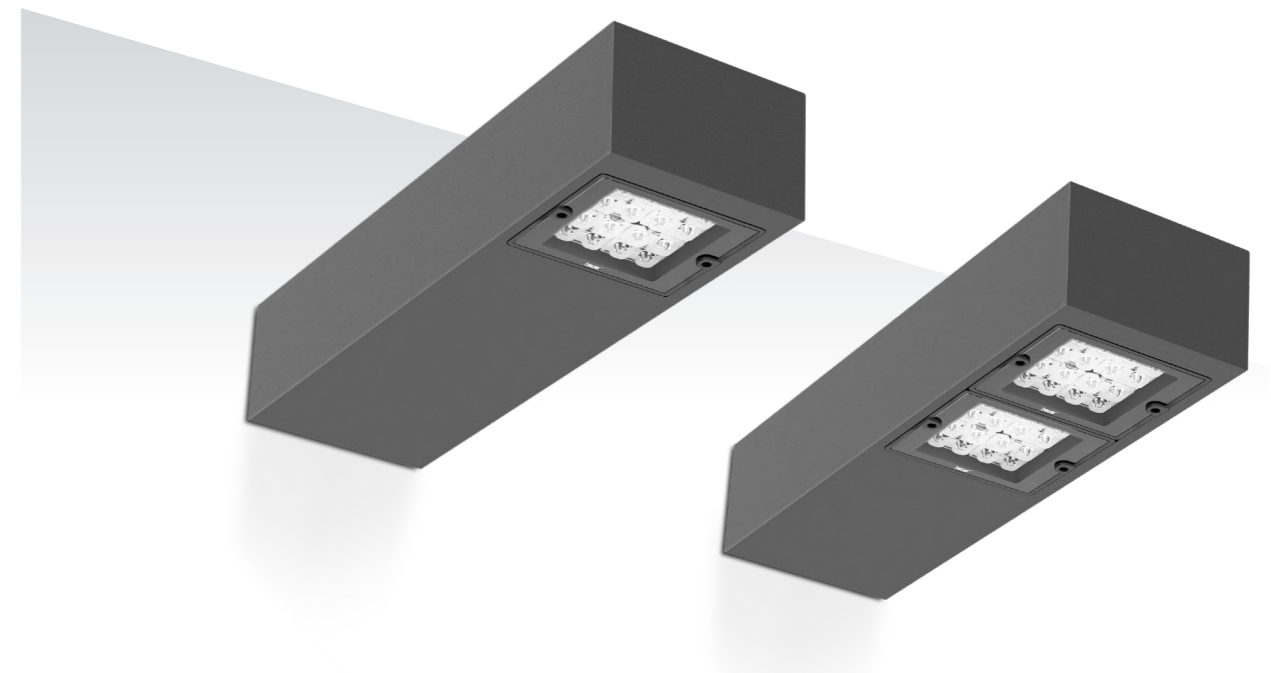


Strong characteristics, flexible optics, and modular structure make DOMINO W stand out for wall-mounted site lighting applications.

DOMINO W

Robust and Scalable Product Family

- Equipped with HEPER's patented Milestone EVO (ML EVO) or AreaFlex (AFX) module
- Minimized glare with hidden light source (ML EVO)
- Flexible optics give the ability to provide various light distributions in different output levels (AFX)
- Indirect lighting with reflector technology (ML EVO)
- Easy installation and maintenance with modular structure
- Approved by the DarkSky International (AFX)



**DARKSKY
APPROVED**
Reduces light pollution
Certified by DarkSky.org

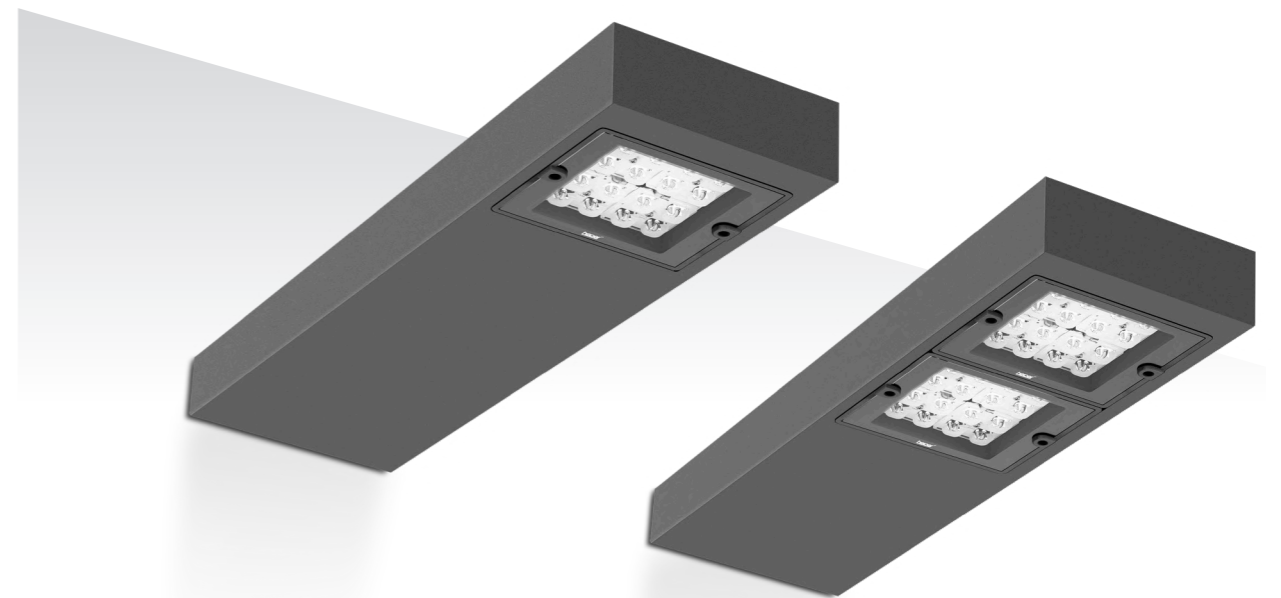


Clean lines, flexible optics, and modular structure make PRIFMA W stand out for wall-mounted site lighting applications.

PRIFMA W

Scalable and Sleek Product Family

- Equipped with HEPER's patented Milestone EVO (ML EVO) or AreaFlex (AFX) module
- Indirect lighting with reflector technology
- Flexible light distribution options from Type I through Type V (AFX)
- Uniform lighting distribution through multifaceted reflectors
- Easy installation and maintenance with modular structure
- Approved by the DarkSky International (AFX)





Multiple lengths, optical possibilities, and various mounting options make the AQSA family stand out for the illumination tasks of contemporary architectural projects.

AQSA

Scalable and Flexible Product Family

- Equipped with long-lasting high-power LEDs
- 4 different light distribution options from narrow to elliptical
- Various mounting possibilities with angle adjustment bracket or long bracket
- Easy installation and maintenance
- Different lengths and lumen packages in order to comply with any project needs



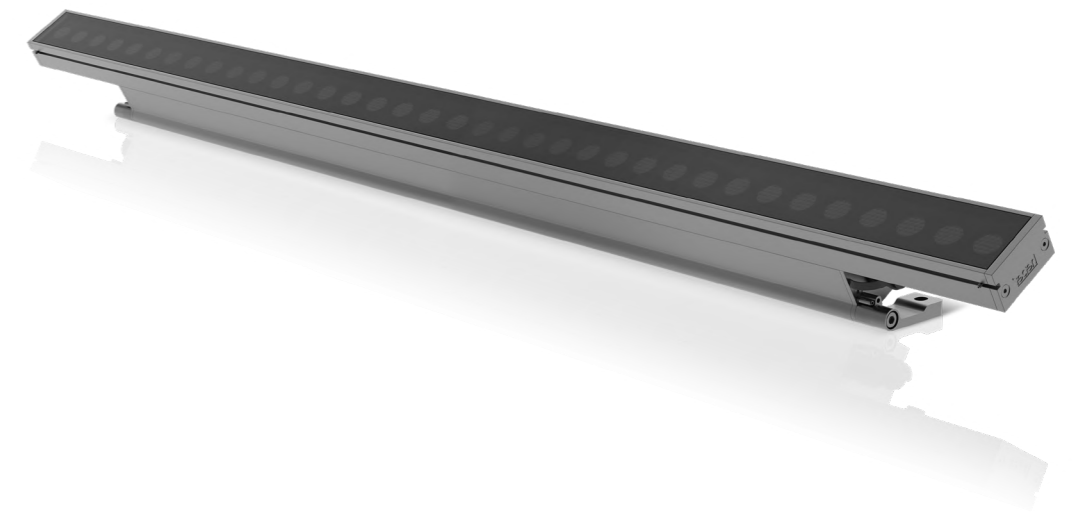


CLEO is a high-performance and sophisticated linear wallwasher luminaire, engineered for uniform and striking illumination of architectural surfaces. Available in 30, 60, 90, and 120 cm lengths, it adapts seamlessly to projects of all scales with a range of power levels, light distributions, and color temperature options. Its lightweight aluminum body, minimalist design, and DALI control compatibility make CLEO a perfect integration of aesthetics and functionality in architectural lighting applications. From urban façades to gallery and museum walls, from cultural landmarks to hotels and commercial spaces, CLEO creates visual continuity, depth, and contrast across surfaces. With its balanced light output that highlights every detail, CLEO is an ideal solution for both indoor and outdoor environments.

CLEO

A High-Performance and Sophisticated Linear Wallwasher Family

- Multiple Length Options (30 / 60 / 90 / 120 cm)
- Versatile Light Distributions & CCTs
- Lightweight Aluminum Body
- Minimalist Design
- DALI Control Compatibility
- Indoor & Outdoor Use
- Enhances Visual Continuity & Contrast



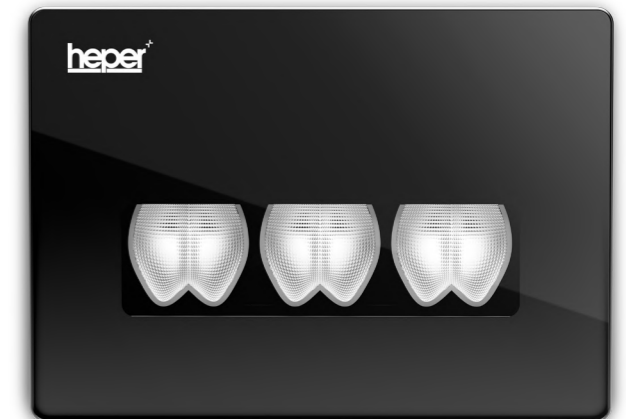


VERTEX W provides uniform light distribution with unique reflector technology and glare reduction with hidden light source.

VERTEX W

Functional beauty

- Equipped with HEPER's Dyno (DYN) module
- Superior glare management with hidden light source
- Indirect lighting with reflector technology
- Uniform light distribution with advanced reflector technology
- Modular structure allowing seamless integration





CHEN is a recessed step light with a minimalist design. It provides reliable path lighting for staircases, corridors, garden walls, and walkways. With its clean, rounded form, it integrates seamlessly into architectural surfaces, delivering soft, uniform illumination. Powered by a high-efficiency LED source, CHEN combines long-lasting performance with low energy consumption.

CHEN

A Minimalist Step Light

- Reliable Path Lighting for Staircases, Corridors, Garden Walls & Walkways
- Clean, Rounded Form for Seamless Architectural Integration
- Soft & Uniform Illumination
- High-Efficiency LED Source
- Long-Lasting Performance with Low Energy Consumption
- Suitable for Indoor & Outdoor Applications





With its round form factor, advanced optics providing perfect beam control, and durable body PUNTO C family stand out for highlighting architectural details in modern projects.

PUNTO C

Flexible and Reliable Product Family

- Equipped with HEPER's Hybrid (HYB) module [S] [N]
- Perfect beam control through multifaceted reflectors (HYB)
- 4 different light distribution options from very narrow to wide
- Easy installation and maintenance



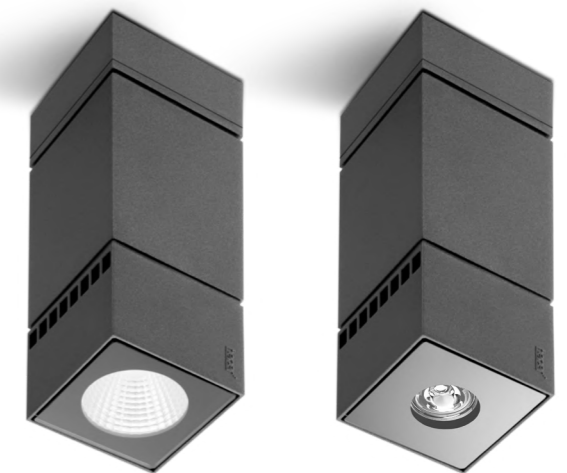


With its square form factor, advanced optics providing perfect beam control, and durable body VEGA C family stand out for highlighting architectural details in modern projects.

VEGA C

Flexible and Reliable Product Family

- Equipped with HEPER's Hybrid (HYB) module [S] [N]
- 4 different throw options
- Well-defined beam angles with reflector and lens combined (HYB)
- Easy installation and maintenance





Its recessed body, precise optics, and minimalist design make VERTEX stand out for contemporary architectural projects.

VERTEX C

Functional and Sleek Recessed Luminaire

- Equipped with HEPER's Dyno (DYN) module
- Superior glare management with hidden light source
- Indirect lighting with reflector technology
- Uniform light distribution with advanced reflector technology
- Modular structure allowing seamless integration





Uniform light distribution and easy installation capabilities make the HANDRA family the perfect choice for both new and retrofit handrail lighting applications.

HANDRA

An Extraordinary Handrail Luminaire Family

- Equipped with HEPER's Dyno (DYN) module
- Minimized glare with hidden light source
- Indirect lighting with reflector technology
- Asymmetric forward or side uniform light distribution
- Vandal resistant compact design
- Retrofit ready for standard dimension handrails
- Easy installation and maintenance with smart wiring system





Precise light distribution, unique design, and flexible optics make D-LIGHT stand out for area and street lighting applications.

D-LIGHT

Technologically Advanced and Modular Pole-top Fixture Family

- Equipped with HEPER's patented Milestone (ML) or AreaFlex (AFX) module
- Minimized glare with hidden light source (ML)
- Indirect lighting with reflector technology
- Flexible light distribution options from Type I through Type V (AFX)
- Uniform lighting distribution through multifaceted reflectors
- Superior thermal management with upward aligned LED chips
- Auto on-off switch during maintenance
- Easy installation and maintenance with modular structure
- Tool-less access to housing



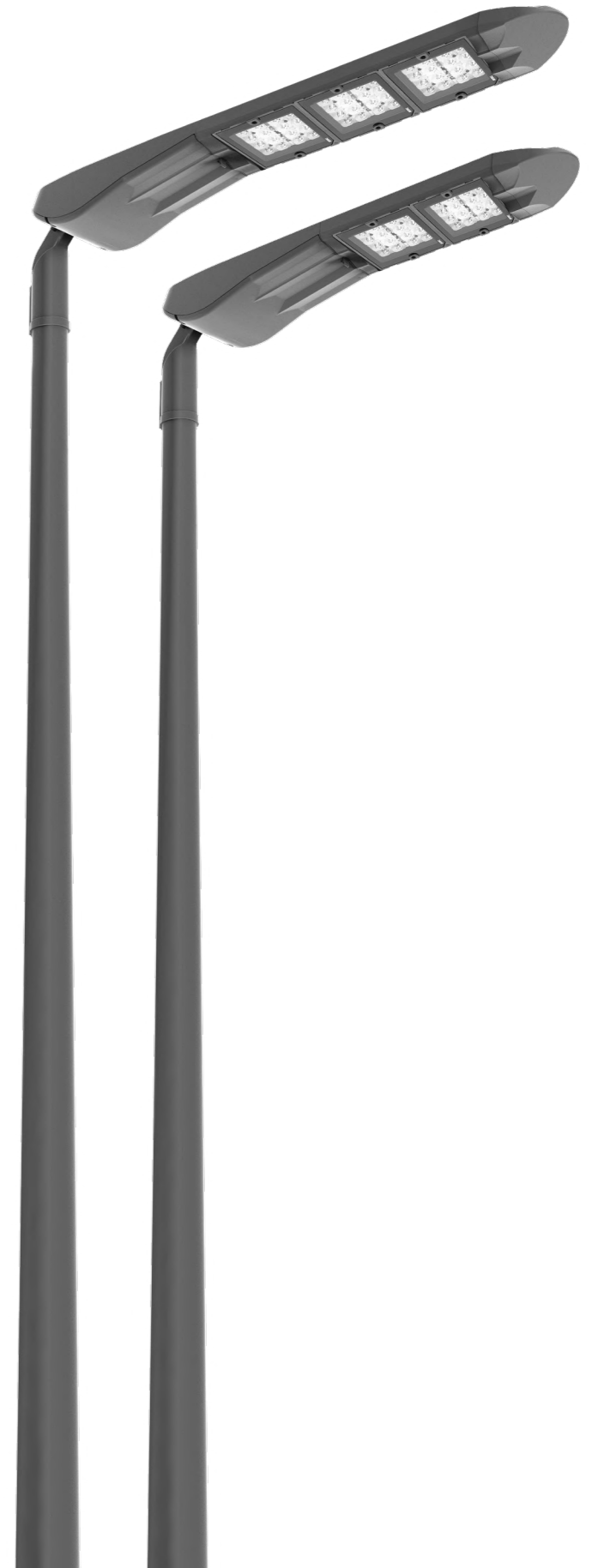


Precise light distribution, modular assembly structure, and flexible optics make D-LIGHT V2 stand out for area and street lighting applications.

D-LIGHT V2

Technologically Advanced and Modular Pole-top Fixture Family

- Equipped with HEPER's patented Milestone EVO (ML EVO) module
- Superior glare management with hidden light source
- Indirect lighting with reflector technology
- Uniform lighting distribution through multifaceted reflectors
- Auto on-off switch during maintenance
- Easy installation and maintenance with modular structure
- Tool-less access to housing





Precise light distribution and endless optical possibilities make TURA stand out for area and street lighting applications.

TURA

Highly Flexible and Functional Pole-top Family

- Equipped with high-efficiency and long-lasting LED light source
- PMMA lenses with high optical adaptability
- Outstanding thermal management through the high-grade aluminum body
- Further flexibility with +15/-15 tilt angle
- Auto on-off switch during maintenance
- Tool-less access to housing





Unique design and optical flexibility combined with energy efficient LED modules and appropriate optics to provide the maximum lighting level and uniformity. Main body is made of stainless steel with high resistance to corrosion and chemicals.

NOX

Vigorous, Flexible and Nonperishable Tunnel Lighting Family

- Equipped with highly efficient LED modules
- Advanced optical technology allowing case-specific lighting design for turnkey tunnel projects
- Durable material and component selection for harsh working conditions within tunnels and underpasses
- Outstanding corrosion control with stainless steel body
- Remarkable thermal management with aluminium alloy heatsink body
- Adaptable performance for global and country specific tunnel and underpass lighting regulations and requirements
- Easy installation and maintenance with direct cable-tray or ceiling mount bracket design



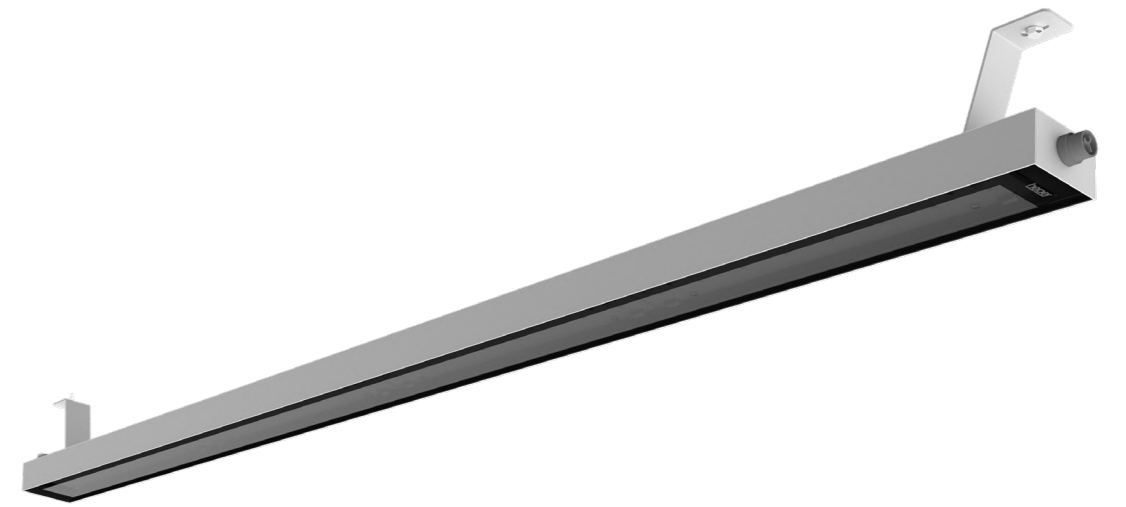


NOX LINEAR is a continuous lighting solution designed for long tunnels and enclosed spaces. Built to deliver seamless, uniform illumination, it eliminates uneven lighting patterns and ensures structural reliability. Developed on the corrosion-resistant foundation of the NOX family, its robust stainless steel body enables direct integration into tunnel infrastructure compliant with ZTV-ING standards. The modular design allows scalable performance and easy transport, while optimized thermal management ensures long-lasting, stable operation.

NOX LINEAR

Seamless Light.
Structural Confidence

- Continuous Lighting for Tunnels
- No Light Gaps
- Corrosion-Resistant Build
- Robust Stainless Steel Body
- Compliant with ZTV-ING Standards
- Optimized Thermal Management





With its round form factor, advanced optics providing perfect beam control, and durable body PUNTO CA family stand out for highlighting architectural details in modern projects.

PUNTO CA

Flexible and Reliable Product Family

- Equipped with HEPER's Hybrid (HYB) module [S] [N]
- 4 different light distribution options from very narrow to wide
- A lens and a reflector combined to provide increased optical efficiency (HYB)
- Easy installation and maintenance



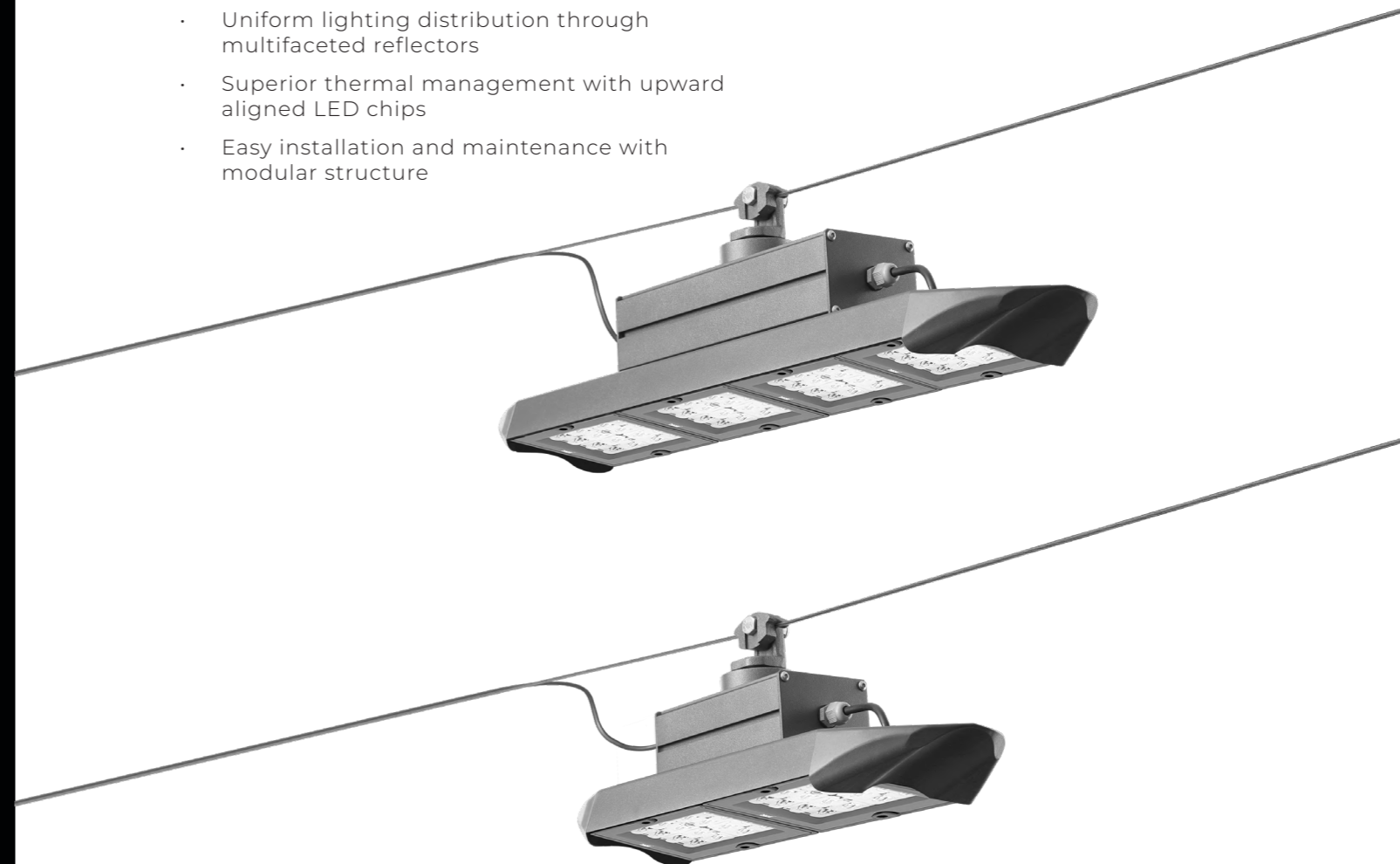


Modern design is combined with modular system for a unique approach for catenary lighting.

C-LIGHT

A new way to catenary lighting

- Equipped with HEPER's patented Milestone (ML) or AreaFlex (AFX) module
- Superior glare management with hidden light source
- Indirect lighting with reflector technology
- Flexible optics give the ability to provide various light distributions in different output levels (AFX)
- Uniform lighting distribution through multifaceted reflectors
- Superior thermal management with upward aligned LED chips
- Easy installation and maintenance with modular structure





Reach Us



HEPER HQ - HPR Pazarlama A.Ş.

Başkent OSB 22. Cd. No: 2, Malıköy, Temelli, Sincan, 06909
Ankara, Turkey
+90 312 267 54 30
info@hepergroup.com
www.heperlighting.com

HEPER Europe GmbH

Ahornweg 5a, 58675
Hemer, Germany
+49 2372 568 7570
infoEU@hepergroup.com
www.heperlighting.com/de

Heper USA

448 N LaSalle Dr 9th Floor Chicago, IL - 60654
Chicago, United States
+1 312 910 9740
infoUS@hepergroup.com
www.heperlighting.com/us

HEPER Gulf FZE

Dubai World Trade Centre PO Box: 416546 Dubai - UAE
Dubai, United Arab Emirates
info@hepergroup.com
www.heperlighting.com

HEPER KSA

Riyadh, Saudi Arabia
+962 790 642 204
support@hepergroup.com
amalik@hepergroup.com
www.heperlighting.com

HEPER Lebanon

Beirut, Lebanon
+961 76 541 256
support@hepergroup.com
ssamara@hepergroup.com
www.heperlighting.com





2025-MNLGHT-011010.45

Heper withholds the right to make modifications on products without prior notice. 01.10.2025

heperlighting.com