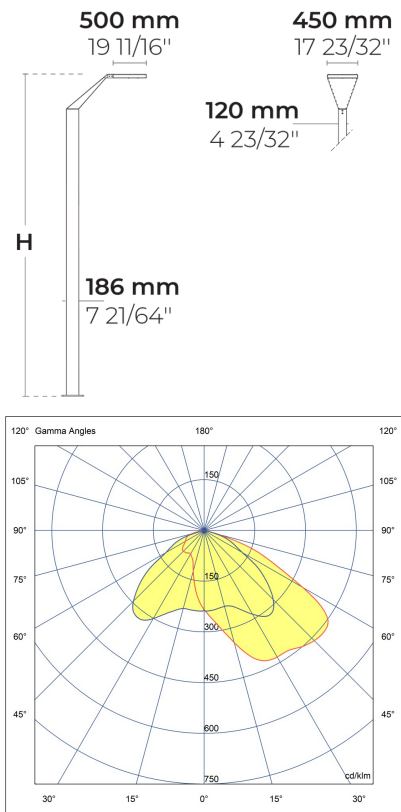


# WINGS AFX 4 Module



LL2012.864-US-T4-700-840-ONOFF



[T4]  
Type IV

## Configuration

|                       |               |
|-----------------------|---------------|
| Light distribution    | [T4] 117x64°  |
| Delivered lumens flux | 14550 lm      |
| Rated input power     | 135 W         |
| Color temperature     | 4000 K CRI 80 |
| Luminaire efficacy    | 103 lm/W      |
| Lamp                  | 64 LED        |
| Color Deviation       | 4 SDCM        |
| BUG rating            | B2-U1-G2      |
| Lifetime L90 (hour)   | >102,000      |
| Lifetime L80 (hour)   | >102,000      |

## Options

## Technical information

|                        |   |
|------------------------|---|
| Mounting               | Surface mountable   |
| Housing                | Corrosion resistant, marine grade aluminum housing  |
| Finishing              | Chromate conversion pretreatment followed by electrostatic powder coating   |
| Fasteners              | Stainless steel (AISI 304 / EN 1.4301 grade)  |
| Gasket                 | Liquid silicone   |
| Lens / Reflector       | PMMA lens with high optical efficiency  |
| Glass / Diffuser       | Tempered safety glass   |
| Impact protection      | IK08  |
| Ingress protection     | IP66  |
| Input voltage          | 120-277V 50/60Hz  |
| Insulation class       | Class I   |
| Weight                 | 140.88 lbs (16.5'), 157.67 lbs (20')  |
| LED module             | High power LEDs on metal-core PCB   |
| Driver                 | Internal LED driver   |
| Through wiring         | Single power cord entry   |
| Operating temperature  | -40...50°C  |
| Power cord             | 20" of outdoor use rated flexible power cord  |
| Packing box dimensions | 17 23/32" * 3 5/32" * 22 53/64"   |
| Pole detail            | Poles are supplied with flange plate. Flange cover and anchorage can be ordered separately. Embedded base is optional |

# Poles (Included)

---

## Product specific poles with base plate



| Configuration code | Height | Diameter /<br>Dimensions | Spigot / End<br>diameter |
|--------------------|--------|--------------------------|--------------------------|
| PAFD.R01.T002-H5   | 16.4'  | 7.3x4.7"                 |                          |
| PAFD.R01.T002-H6   | 19.7'  | 7.3x4.7"                 |                          |

|              |  |      |  |      |  |          |  |
|--------------|--|------|--|------|--|----------|--|
| Project name |  |      |  | Type |  | Quantity |  |
| Date         |  | Note |  |      |  |          |  |

**LL2012.864-US-T4-700-840-ONOFF-\_\_-\_\_-\_\_**

| Light distribution  | Rated input power                     | Color temperature             | Control                  | Product colors  |
|---|---------------------------------------|-------------------------------|--------------------------|---|
| <b>[T4]</b><br>Type IV - 117x64°                          | <b>[700]</b><br>135 W                 | <b>[840]</b><br>4000 K CRI 80 | <b>[ONOFF]</b><br>On/Off | <b>[HM1]</b><br>Black                                 |
| <b>[P4]</b><br>Pedestrian crosswalk distribution - 20x78° | <b>[500]</b><br>97 W                  | <b>[827]</b><br>2700 K CRI 80 |                          | <b>[HM2]</b><br>Dark gray                             |
| <b>[T1]</b><br>Type I - 111x48°                           | <b>[350]</b><br>68 W                  | <b>[830]</b><br>3000 K CRI 80 |                          | <b>[HM3]</b><br>Anthracite gray                       |
| <b>[T2]</b><br>Type II - 133x48°                          |                                       | <b>[740]</b><br>4000 K CRI 70 |                          | <b>[HM4]</b><br>Light gray                            |
| <b>[T2]</b><br>Type II - 149x54°                          |                                       |                               |                          | <b>[HM5]</b><br>White                                 |
| <b>[T3]</b><br>Type III - 143x63°                         |                                       |                               |                          | <b>[HM6]</b><br>Bronze                                |
| <b>[T5]</b><br>Type V - 117°                              |                                       |                               |                          | <b>[CC]</b><br>Custom color (Please specify RAL code) |
| Height  | Extras                                |                               |                          |   |
| <b>[H5]</b><br>16.4'                                      | <b>Luminaire body options</b>         |                               |                          |   |
| <b>[H6]</b><br>19.7'                                      | <b>[DPC]</b><br>Double powder coating |                               |                          |   |
| <b>[HC]</b>   |                                       |                               |                          |   |