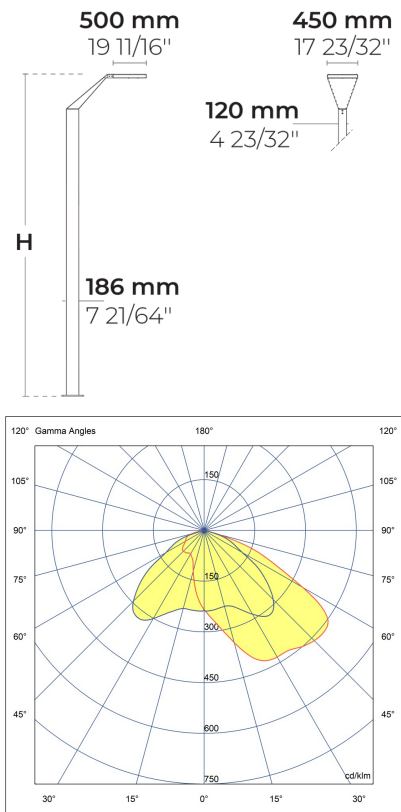


# WINGS AFX 4 Module



LL2012.864-US-T4-700-827-ONOFF



[T4]  
Type IV

## Configuration

Light distribution	[T4] 117x64°
Delivered lumens flux	14550 lm
Rated input power	135 W
Color temperature	2700 K CRI 80
Luminaire efficacy	103 lm/W
Lamp	64 LED
Color Deviation	3 SDCM
BUG rating	B2-U1-G2
Lifetime L90 (hour)	>102,000
Lifetime L80 (hour)	>102,000

## Options

## Technical information

Mounting	Surface mountable
Housing	Corrosion resistant, marine grade aluminum housing
Finishing	Chromate conversion pretreatment followed by electrostatic powder coating
Fasteners	Stainless steel (AISI 304 / EN 1.4301 grade)
Gasket	Liquid silicone
Lens / Reflector	PMMA lens with high optical efficiency
Glass / Diffuser	Tempered safety glass
Impact protection	IK08
Ingress protection	IP66
Input voltage	120-277V 50/60Hz
Insulation class	Class I
Weight	140.88 lbs (16.5'), 157.67 lbs (20')
LED module	High power LEDs on metal-core PCB
Driver	Internal LED driver
Through wiring	Single power cord entry
Operating temperature	-40...50°C
Power cord	20" of outdoor use rated flexible power cord
Packing box dimensions	17 23/32"*3 5/32"*22 53/64"
Pole detail	Poles are supplied with flange plate. Flange cover and anchorage can be ordered separately. Embedded base is optional

# Poles (Included)

---

## Product specific poles with base plate



Configuration code	Height	Diameter / Dimensions	Spigot / End diameter
PAFD.R01.T002-H5	16.4'	7.3x4.7"	
PAFD.R01.T002-H6	19.7'	7.3x4.7"	

Project name				Type		Quantity	
Date		Note					

LL2012.864-US-T4-700-827-ONOFF-\_\_-\_\_-\_\_

Light distribution	Rated input power	Color temperature	Control	Product colors
<div> <div>[T4]</div> <div>Type IV - 117x64°</div> </div> <div> <div>[P4]</div> <div>Pedestrian crosswalk distribution - 20x78°</div> </div> <div> <div>[T1]</div> <div>Type I - 111x48°</div> </div> <div> <div>[T2]</div> <div>Type II - 133x48°</div> </div> <div> <div>[T2]</div> <div>Type II - 149x54°</div> </div> <div> <div>[T3]</div> <div>Type III - 143x63°</div> </div> <div> <div>[T5]</div> <div>Type V - 117°</div> </div>	<div> <div>[700]</div> <div>135 W</div> </div> <div> <div>[500]</div> <div>97 W</div> </div> <div> <div>[350]</div> <div>68 W</div> </div>	<div> <div>[827]</div> <div>2700 K CRI 80</div> </div> <div> <div>[830]</div> <div>3000 K CRI 80</div> </div> <div> <div>[740]</div> <div>4000 K CRI 70</div> </div> <div> <div>[840]</div> <div>4000 K CRI 80</div> </div>	<div> <div>[ONOFF]</div> <div>On/Off</div> </div>	<div> <div>[HM1]</div> <div>Black</div> <div></div> </div> <div> <div>[HM2]</div> <div>Dark gray</div> <div></div> </div> <div> <div>[HM3]</div> <div>Anthracite gray</div> <div></div> </div> <div> <div>[HM4]</div> <div>Light gray</div> <div></div> </div> <div> <div>[HM5]</div> <div>White</div> <div></div> </div> <div> <div>[HM6]</div> <div>Bronze</div> <div></div> </div> <div> <div>[CC]</div> <div>Custom color (Please specify RAL code)</div> <div></div> </div>
Height	Extras			
<div> <div>[H5]</div> <div>16.4'</div> </div> <div> <div>[H6]</div> <div>19.7'</div> </div> <div> <div>[HC]</div> </div>	<div> <div>Luminaire body options</div> </div> <div> <div>[DPC]</div> <div>Double powder coating</div> </div>			