

Round cylindrical aluminum
pole with base plate - Ø4
1/2"

PAFC.D114-S114-H3



Configuration

Diameter / Dimensions (D)	Ø4 1/2"
Thickness	0.1"
Spigot / End diameter (S)	Ø4 1/2"
Height (H)	10'
Weight	30 lb
AD	15 3/4 x 3 11 11/32"
OP	19 11/16"

Options

Accessories (Included)

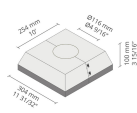
Base plates



F0301B
F0301B

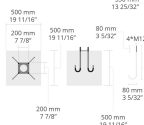
Accessories (To be ordered separately)

Bolt covers



C1C2B
C1C2B

Anchor bolts



90BJ001
90BJ001

Mounting arms






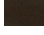



Mounting arm - 2
sides
PTCD

Mounting arms



Mounting arm - 1
side
PTCS

Project name				Type		Quantity	
Date		Note					
PAFC.D114-S114-H3-__-__							
Spigot / End diameter (S)	Height (H)	Product colors		Extras	Accessories		
[S114] Ø4 1/2"	[H3] 10'	[HM1] Black		Spigot converter	Included		
	[H4] 13.1' [H5] 16.4'	[HM2] Dark gray		[SC4] 4 1/2" to 3 1/2"	Base plates		
		[HM3] Anthracite gray			[F0301B] F0301B		
		[HM4] Light gray			To be ordered separately		
		[HM5] White			Bolt covers		
		[HM6] Bronze			[C1C2B] C1C2B		
		[CC] Custom color (Please specify RAL code)			Anchor bolts		
					[90BJ001] 90BJ001		
				Mounting arms			
					[PTCD] Mounting arm - 2 sides		
					[PTCS] Mounting arm - 1 side		