

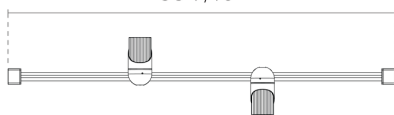
# SPARK ST W Duo



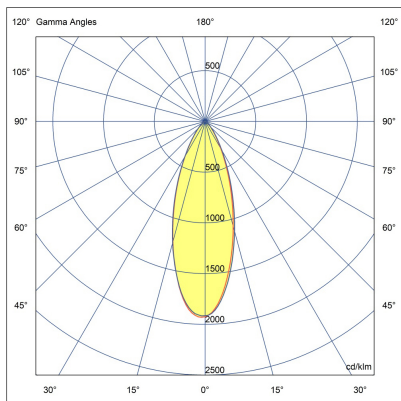
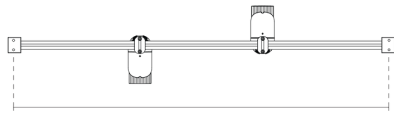
LW8044.529-EN-MN-500-927



900 mm  
35 7/16"



874 mm  
34 13/32"



[MN]

Medium narrow -  
NEMA Type 3

## Configuration

<b>Light distribution</b>	[MN] 36°
<b>Delivered lumens flux</b>	1310 lm
<b>Rated input power</b>	22 W
<b>Color temperature</b>	2700 K CRI 90
<b>Luminaire efficacy</b>	65 lm/W
<b>Lamp</b>	2 LED
<b>Color Deviation</b>	3 SDCM
<b>Lifetime L90 (hour)</b>	>50000
<b>Lifetime L80 (hour)</b>	>50000

## Options

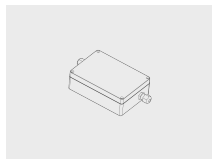
## Technical information

<b>Mounting</b>	Wall mountable
<b>Tilt angle</b>	+90°/0°
<b>Rotation angle</b>	0°/+355°
<b>Housing</b>	Corrosion resistant, marine grade aluminum housing
<b>Finishing</b>	Knurled surface in black anodized aluminum and body in chromate conversion pretreatment followed by electrostatic powder coating
<b>Fasteners</b>	Stainless steel (AISI 304 / EN 1.4301 grade)
<b>Gasket</b>	EPDM gasket (Shore A 25-30)
<b>Lens / Reflector</b>	PMMA lens with high optical efficiency
<b>Glass / Diffuser</b>	Tempered safety glass
<b>Impact protection</b>	IK07
<b>Ingress protection</b>	IP66
<b>Input voltage</b>	36 Vdc (Max) 500 mA
<b>Insulation class</b>	Class III
<b>Weight</b>	1.8 kg
<b>LED module</b>	High efficacy COB LED with long time reliability
<b>Driver</b>	External LED driver
<b>Through wiring</b>	Single power cord entry
<b>Operating temperature</b>	-40...50°C
<b>Power cord</b>	8" of flexible power cord

## Accessories (To be ordered separately)

---

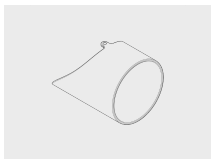
Mounting accessories



**DALI & On/Off  
driver within an  
IP67 box for  
SPARK Duo**

007502122

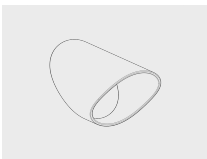
Optical accessories



**Visor for SPARK**

101652204


Optical accessories



**Snoot for SPARK**

101652202

<b>Project name</b>		<b>Type</b>		<b>Quantity</b>	
<b>Date</b>		<b>Note</b>			
<b>LW8044.529-EN-MN-500-927-__-__-__-__-__-__</b>					

Light distribution	Rated input power	Color temperature	Control	Product colors
<b>[MN]</b> Medium narrow - NEMA Type 3 - 36°  <b>[VN]</b> Very narrow - NEMA Type 1 - 18°  <b>[N]</b> Narrow - NEMA Type 2 - 24°  <b>[M]</b> Medium - NEMA Type 4 - 60°	<b>[500]</b> 22 W	<b>[927]</b> 2700 K CRI 90  <b>[830]</b> 3000 K CRI 80  <b>[930]</b> 3000 K CRI 90		<b>[HM1]</b>  Black  <b>[HM2]</b>  Dark gray  <b>[HM3]</b>  Anthracite gray  <b>[HM4]</b>  Light gray  <b>[HM5]</b>  White  <b>[HM6]</b>  Bronze  <b>[CC]</b>  Custom color (Please specify RAL code)
<b>Height</b>	<b>Extras</b>	<b>Accessories (<i>To be ordered separately</i>)</b>		
<b>[H0.60]</b> 1.9'  <b>[H0.90]</b> 2.9'	<b>Light output</b>  <b>[BCF]</b> Blue Color Filter  <b>[GCF]</b> Green Color Filter  <b>[HNY]</b> Honeycomb  <b>[OCF]</b> Orange Color Filter  <b>[RCF]</b> Red Color Filter  <b>[YCF]</b> Yellow Color Filter  <b>Luminaire body options</b>  <b>[DPC]</b> Double powder coating	<b>Mounting accessories</b>  <b>[007502122]</b> DALI & On/Off driver within an IP67 box for SPARK Duo  <b>Optical accessories</b>  <b>[101652204]</b> Visor for SPARK  <b>[101652202]</b> Snoot for SPARK		