

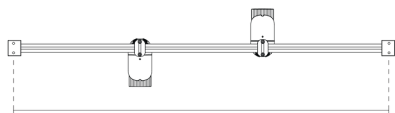
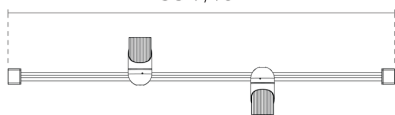
SPARK ST W Duo



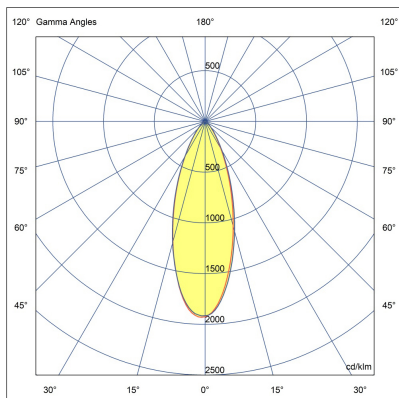
LW8044.529-EN-MN-500-927



900 mm
35 7/16"



874 mm
34 13/32"



[MN]

Medium narrow -
NEMA Type 3

Configuration

Light distribution	[MN] 36°
Delivered lumens flux	1310 lm
Rated input power	22 W
Color temperature	2700 K CRI 90
Luminaire efficacy	65 lm/W
Lamp	2 LED
Color Deviation	3 SDCM
Lifetime L90 (hour)	>50000
Lifetime L80 (hour)	>50000

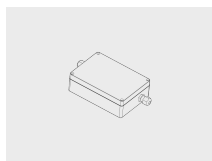
Options

Technical information

Mounting	Wall mountable
Tilt angle	+90°/0°
Rotation angle	0°/+355°
Housing	Corrosion resistant, marine grade aluminum housing
Finishing	Knurled surface in black anodized aluminum and body in chromate conversion pretreatment followed by electrostatic powder coating
Fasteners	Stainless steel (AISI 304 / EN 1.4301 grade)
Gasket	EPDM gasket (Shore A 25-30)
Lens / Reflector	PMMA lens with high optical efficiency
Glass / Diffuser	Tempered safety glass
Impact protection	IK07
Ingress protection	IP66
Input voltage	36 Vdc (Max) 500 mA
Insulation class	Class III
Weight	1.8 kg
LED module	High efficacy COB LED with long time reliability
Driver	External LED driver
Through wiring	Single power cord entry
Operating temperature	-40...50°C
Power cord	8" of flexible power cord

Accessories (To be ordered separately)

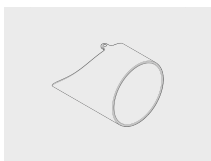
Mounting accessories



**DALI & On/Off
driver within an
IP67 box for
SPARK Duo**

007502122

Optical accessories



Visor for SPARK

101652204


Optical accessories



Snoot for SPARK

101652202

Project name		Type		Quantity	
Date		Note			
LW8044.529-EN-MN-500-927-__-__-__-__-__-__					

Light distribution	Rated input power	Color temperature	Control	Product colors
[MN] Medium narrow - NEMA Type 3 - 36° [VN] Very narrow - NEMA Type 1 - 18° [N] Narrow - NEMA Type 2 - 24° [M] Medium - NEMA Type 4 - 60°	[500] 22 W	[927] 2700 K CRI 90 [830] 3000 K CRI 80 [930] 3000 K CRI 90		[HM1]  Black [HM2]  Dark gray [HM3]  Anthracite gray [HM4]  Light gray [HM5]  White [HM6]  Bronze [CC]  Custom color (Please specify RAL code)
Height	Extras	Accessories (<i>To be ordered separately</i>)		
[H0.60] 1.9' [H0.90] 2.9'	Light output [BCF] Blue Color Filter [GCF] Green Color Filter [HNY] Honeycomb [OCF] Orange Color Filter [RCF] Red Color Filter [YCF] Yellow Color Filter Luminaire body options [DPC] Double powder coating	Mounting accessories [007502122] DALI & On/Off driver within an IP67 box for SPARK Duo Optical accessories [101652204] Visor for SPARK [101652202] Snoot for SPARK		