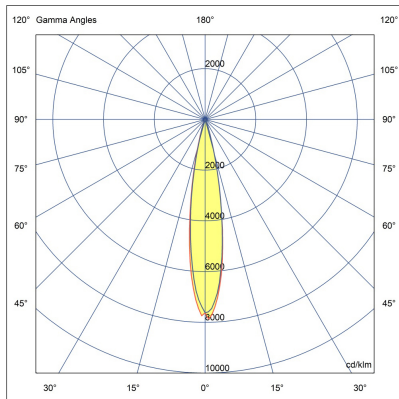
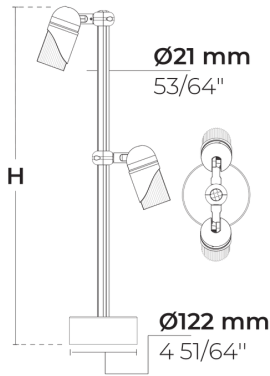


# SPARK ST Duo

CE UK CA IK07 IP66



LB8044.529-EN-VN-500-830-CC-36V-500-C3



[VN]

Very narrow

## Variant

Light distribution	[VN] 18°
Delivered lumens flux	1414 lm
Rated input power	22 W
Colour temperature	3000 K CRI 80
Luminaire efficacy	71 lm/W
Lamp	2 LED
MacAdam Ellipse	3 SDCM
BUG rating	B1-U0-G0
Lifetime L90B50 (hour)	>50000
Lifetime L80B50 (hour)	>50000

## Options

## Technical information

Mounting	Surface mountable
Tilt angle	+90°/0°
Rotation angle	0°/+355°
Housing	Corrosion resistant, marine grade aluminum housing
Finishing	Knurled surface in black anodized aluminum and body in chromate conversion pretreatment followed by electrostatic powder coating
Fasteners	Stainless steel (AISI 316L)
Gasket	EPDM gasket (Shore A 25-30)
Lens / Reflector	PMMA lens with high optical efficiency
Glass / Diffusor	Tempered safety glass
Impact protection	IK07
Ingress protection	IP66
Input voltage	36 Vdc (Max) 500 mA
Insulation class	Class III
Weight	1.8 kg
LED module	High efficacy COB LED with long time reliability
Driver	External LED driver
Through wiring	Single cable entry
Operating temperature	-40...50°C
Cable	0.4 m of flexible cable
Notes	For 3000K 90CRI enquiries, please consult the factory.

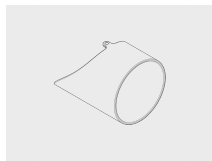
HPR Pazarlama A.Ş.  
Başkent OSB 22. Cd. No: 2, Malıköy, Temelli,  
Sincan, 06909 Ankara, Turkey  
+90 312 267 54 30  
info@hepergroup.com

HEPER Europe GmbH  
Ahornweg 5a, 58675  
Hemer, Germany  
+49 237 2901 2975  
infoEU@hepergroup.com

We reserve the right to change specifications without prior written notice. Edition: 05.05.2024.  
For current version visit [heperlighting.com](http://heperlighting.com). All flux (±%7 tolerance) and power values (±%10 tolerance) are derived following appropriate IES, CIE, and applicable standards.

## Accessories (To be ordered separately)

### Optical accessories



**Visor for SPARK**

101652204

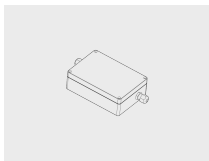
### Optical accessories



**Snoot for SPARK**

101652202

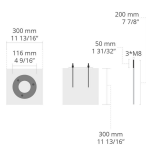
### Mounting accessories



**DALI & On/Off  
driver within an  
IP67 box for  
SPARK Duo**

007502122

### Anchorage



**6281004**

6281004

Project name		Type		Quantity	
Date		Note			
LB8044.529-EN-VN-500-830-__-CC-36V-500-C3-__-__-__-__					

Light distribution	Rated input power	Colour temperature	Control	Product colours
<b>[VN]</b> Very narrow - 18°	<b>[500]</b> 22 W	<b>[830]</b> 3000 K CRI 80		<b>[HM1]</b> Black
<b>[N]</b> Narrow - 24°		<b>[927]</b> 2700 K CRI 90		<b>[HM2]</b> Dark grey
<b>[MN]</b> Medium narrow - 36°		<b>[930]</b> 3000 K CRI 90		<b>[HM3]</b> Anthracite grey
<b>[M]</b> Medium - 60°				<b>[HM4]</b> Light grey
				<b>[HM5]</b> White
				<b>[HM6]</b> Bronze
				<b>[CC]</b> Custom colour (Please specify RAL code)
Height	Extras	Accessories ( <i>To be ordered separately</i> )		
<b>[H0.60]</b> 60cm	<b>Light output</b>	<b>Optical accessories</b>		
<b>[H0.90]</b> 90cm	<b>[BCF]</b> Blue Colour Filter	<b>[101652204]</b> Visor for SPARK		
<b>[HC]</b>	<b>[GCF]</b> Green Colour Filter	<b>[101652202]</b> Snoot for SPARK		
	<b>[HNY]</b> Honeycomb	<b>Mounting accessories</b>		
	<b>[OCF]</b> Orange Colour Filter	<b>[007502122]</b> DALI & On/Off driver within an IP67 box for SPARK Duo		
	<b>[RCF]</b> Red Colour Filter	<b>Anchorage</b>		
	<b>[YCF]</b> Yellow Colour Filter	<b>[628I004]</b> 628I004		
	<b>Luminaire body options</b>			
	<b>[DPC]</b> Double powder coating			