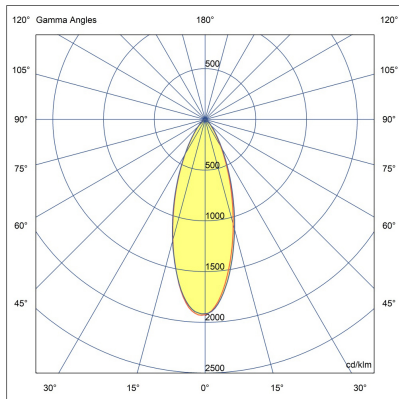
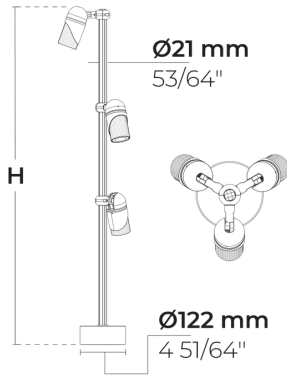


SPARK ST Trio

CE UK CA IK07 IP66



LB8043.529-EN-MN-750-830-CC-36V-750-C3



[MN]

Medium narrow

Variant

Light distribution	[MN] 36°
Delivered lumens flux	2385 lm
Rated input power	33 W
Colour temperature	3000 K CRI 80
Luminaire efficacy	72 lm/W
Lamp	3 LED
MacAdam Ellipse	3 SDCM
BUG rating	B2-U0-G0
Lifetime L90B50 (hour)	>50000
Lifetime L80B50 (hour)	>50000

Options

Technical information

Mounting	Surface mountable
Tilt angle	+90°/0°
Rotation angle	0°/+355°
Housing	Corrosion resistant, marine grade aluminum housing
Finishing	Knurled surface in black anodized aluminum and body in chromate conversion pretreatment followed by electrostatic powder coating
Fasteners	Stainless steel (AISI 316L)
Gasket	EPDM gasket (Shore A 25-30)
Lens / Reflector	PMMA lens with high optical efficiency
Glass / Diffuser	Tempered safety glass
Impact protection	IK07
Ingress protection	IP66
Input voltage	36 Vdc (Max) 750 mA
Insulation class	Class III
Weight	2.5 kg
LED module	High efficacy COB LED with long time reliability
Driver	External LED driver
Through wiring	Single cable entry
Operating temperature	-40...50°C
Cable	0.4 m of flexible cable
Notes	For 3000K 90CRI enquiries, please consult the factory.

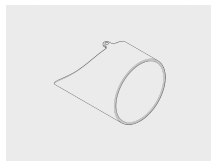
HPR Pazarlama A.Ş.
Başkent OSB 22. Cd. No: 2, Malıköy, Temelli,
Sincan, 06909 Ankara, Turkey
+90 312 267 54 30
info@hepergroup.com

HEPER Europe GmbH
Ahornweg 5a, 58675
Hemer, Germany
+49 237 2901 2975
infoEU@hepergroup.com

We reserve the right to change specifications without prior written notice. Edition: 27.04.2024.
For current version visit heperlighting.com. All flux (±7% tolerance) and power values (±10% tolerance) are derived following appropriate IES, CIE, and applicable standards.

Accessories (To be ordered separately)

Optical accessories



Visor for SPARK

101652204

Optical accessories



Snoot for SPARK

101652202

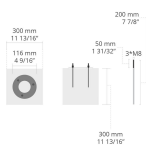
Mounting accessories



**DALI & On/Off
driver within an
IP67 box for
SPARK Trio**

007502123







Anchorage



628I004

628I004

Project name		Type		Quantity	
Date		Note			
LB8043.529-EN-MN-750-830-__-CC-36V-750-C3-__-__-__-__					

Light distribution	Rated input power	Colour temperature	Control	Product colours
[MN] Medium narrow - 36°	[750] 33 W	[830] 3000 K CRI 80		[HM1] Black 
[VN] Very narrow - 18°	[750] 30 W	[927] 2700 K CRI 90		[HM2] Dark grey 
[N] Narrow - 24°		[930] 3000 K CRI 90		[HM3] Anthracite grey 
[M] Medium - 60°				[HM4] Light grey 
				[HM5] White 
				[CC]  Custom colour (Please specify RAL code)
Height	Extras	Accessories (<i>To be ordered separately</i>)		
[H0.60] 60cm	Light output	Optical accessories		
[H0.90] 90cm	[BCF] Blue Colour Filter	[101652204] Visor for SPARK		
[HC]	[GCF] Green Colour Filter	[101652202] Snoot for SPARK		
	[HNY] Honeycomb	Mounting accessories		
	[OCF] Orange Colour Filter	[007502123] DALI & On/Off driver within an IP67 box for SPARK Trio		
	[RCF] Red Colour Filter	Anchorage		
	[YCF] Yellow Colour Filter	[628I004] 628I004		
	Luminaire body options			
	[DPC] Double powder coating			