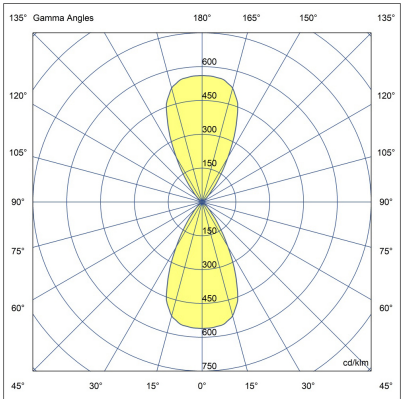
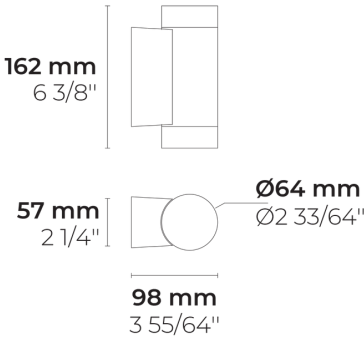
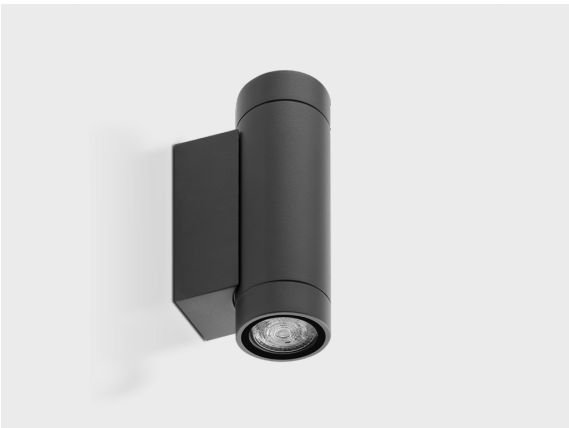


# PINA W Duo



LW8033.003-US-M-M-927



[M]

Medium - NEMA  
Type 4

## Configuration

Light distribution	[M] 60°
Delivered lumens flux	735 lm
Rated input power	15 W
Color temperature	2700 K CRI 90
Luminaire efficacy	49 lm/W
Lamp	2 LAMP
Color Deviation	5 SDCM

## Options

## Technical information

Mounting	Wall mountable
Housing	Corrosion resistant, marine grade aluminum housing
Finishing	Chromate conversion pretreatment followed by electrostatic powder coating
Fasteners	Stainless steel (AISI 304 / EN 1.4301 grade)
Gasket	Silicone
Glass / Diffusor	Tempered safety glass
Impact protection	IK06
Ingress protection	IP65
Input voltage	120-277V 50/60Hz
Insulation class	Class I
Weight	0.9 lbs
Driver	Internal LED driver
Power factor	> 0.93
Through wiring	Single power cord entry
Power cord	8" of flexible power cord

Project name					Type		Quantity	
Date			Note					
LW8033.003-US-M-M-927-__-__								

Light distribution	Rated input power	Color temperature	Control	Product colors
<div>[M] Medium - NEMA Type 4 - 60°</div> <div>[VN] Very narrow - NEMA Type 1 - 10°</div> <div>[N] Narrow - NEMA Type 2 - 25°</div> <div>[MN] Medium narrow - NEMA Type 3 - 36°</div>	<div>[I] 15 W</div>	<div>[927] 2700 K CRI 90</div> <div>[930] 3000 K CRI 90</div> <div>[940] 4000 K CRI 90</div>	<div>[ONOFF] On/Off</div> <div>[PD] Phase dimming</div>	<div>[HM1] Black</div> <div>[HM2] Dark gray</div> <div>[HM3] Anthracite gray</div> <div>[HM4] Light gray</div> <div>[HM5] White</div> <div>[HM6] Bronze</div> <div>[CC] Custom color (Please specify RAL code)</div>