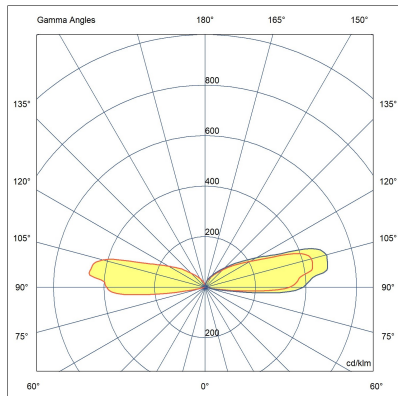
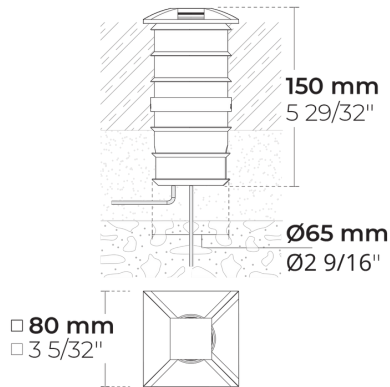
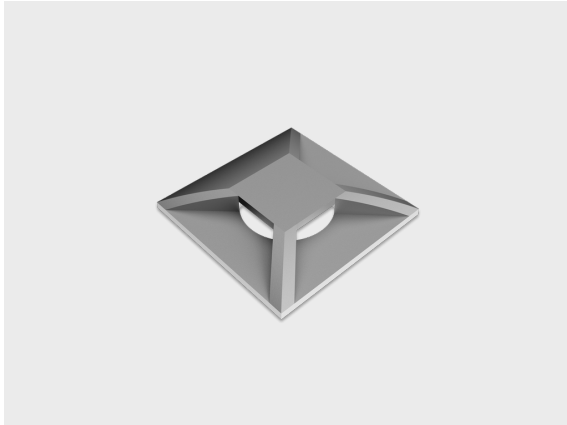


LR9014.515-3x90-EN-C3-350-830-ONOFF-EN-C1



[C3-90]

Controlled, 3 sides,  
3x90°

## Variant

Light distribution	[C3-90] 270x50°
Delivered lumens flux	19 lm
Rated input power	1.7 W
Colour temperature	3000 K CRI 80
Luminaire efficacy	11 lm/W
Lamp	1 LED
MacAdam Ellipse	3 SDCM
Lifetime L90B50 (hour)	>102,000
Lifetime L80B50 (hour)	>102,000

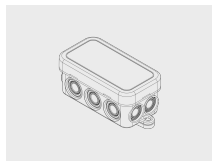
## Options

## Technical information

Mounting	Ground recessed mountable
Housing	Corrosion resistant, marine grade aluminum housing
Finishing	Chromate conversion pretreatment followed by electrostatic powder coating
Fasteners	Stainless steel (AISI 304 / EN 1.4301 grade)
Gasket	Silicone rubber
Lens / Reflector	PMMA lens with high optical efficiency
Glass / Diffusor	Custom Design PMMA Diffusor
Impact protection	IK10
Ingress protection	IP67
Input voltage	220-240V 50/60Hz
Insulation class	Class I
Weight	0.66 kg
LED module	High power LEDs on metal-core PCB
Driver	Internal LED driver
Driver surge protection	1/1 kV
Power factor	> 0.60
Through wiring	Single cable entry
Operating temperature	-40...50°C
Cable	0.3 m of rubber-sheathed cable

## Accessories (Included)

Mounting accessories



**Junction Box for  
MINIMO-MINIKA**

141901034

Mounting accessories

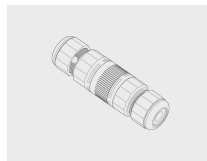


**Plastic case for  
MINIMO/MINIKA**

160401101

## Accessories (To be ordered separately)

Mounting accessories



**Connector set - 5-  
pole**

141407400

Project name		Type		Quantity	
Date		Note			
LR9014.515-3x90-EN-C3-350-830-ONOFF-EN-C1-__-__-__					

Light distribution	Rated input power	Colour temperature	Control	Product colours
<b>[C3-90]</b> Controlled, 3 sides, 3x90° - 270x50°	<b>[350]</b> 1.7 W	<b>[830]</b> 3000 K CRI 80	<b>[ONOFF]</b> On/Off	<b>[HM1]</b> Black
		<b>[827]</b> 2700 K CRI 80		<b>[HM2]</b> Dark grey
		<b>[740]</b> 4000 K CRI 70		<b>[HM3]</b> Anthracite grey
		<b>[840]</b> 4000 K CRI 80		<b>[HM4]</b> Light grey
				<b>[HM5]</b> White
				<b>[HM6]</b> Bronze
				<b>[CC]</b> Custom colour (Please specify RAL code)
Extras	Accessories (Included)	Accessories (To be ordered separately)		
Consult the factory	Mounting accessories	Mounting accessories		
<b>[UNI]</b> 120-277V 50/60Hz	<b>[141901034]</b> Junction Box for MINIMO-MINIKA	<b>[141407400]</b> Connector set - 5-pole		
Luminaire body options				
<b>[SS]</b> Stainless steel housing	<b>[160401101]</b> Plastic case for MINIMO/MINIKA			