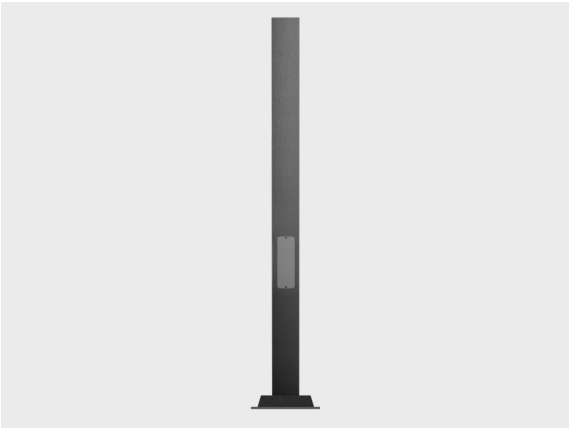


**Product specific poles with
base plate - 7 3/32*2 3/4"
PRIFMA**

PAFD.R03.T001-H5



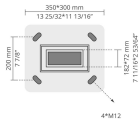
Configuration

Diameter / Dimensions (D)	7.1x2.8"
Thickness	0.1"
Height (H)	16.4'
Weight	68.46 lbs
AD	11.8x3.5"
OP	3.3'

Options

Accessories (Included)

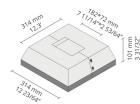
Base plates



100712034
100712034

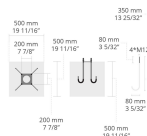
Accessories (To be ordered separately)

Bolt covers









C3T2X
C3T2X

Anchor bolts



90BJ001
90BJ001

Project name				Type		Quantity	
Date			Note				
PAFD.R03.T001-H5-__							
Spigot / End diameter (S)	Height (H)	Product colors		Accessories			
	[H5] 16.4'	[HM1] Black		Included			
	[H3] 10' [H4] 13.1' [H6] 19.7'	[HM2] Dark gray		Base plates			
				[100712034] 100712034			
		[HM3] Anthracite gray		To be ordered separately			
		[HM4] Light gray		Bolt covers			
		[HM5] White		[C3T2X] C3T2X			
		[HM6] Bronze		Anchor bolts			
		[90B]001 90B]001					
		[CC] Custom color (Please specify RAL code)	