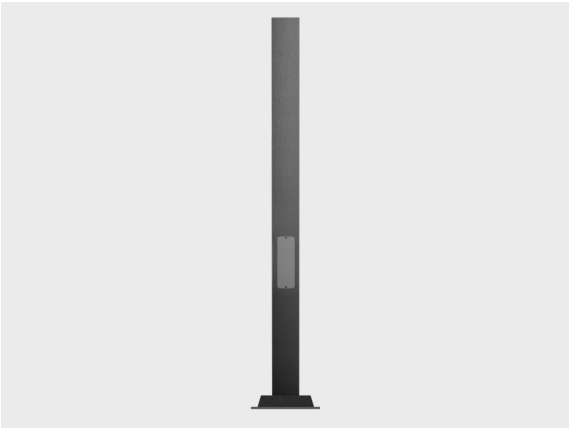


**Product specific poles with
base plate - 7 21/64*4 23/32"
WINGS**

PAFD.R01.T002-H3



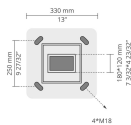
Configuration

Diameter / Dimensions (D)	7.3x4.7"
Thickness	0.1"
Height (H)	10'
Weight	93.72 lbs
AD	12.8x3.5"
OP	20 55/64"

Options

Accessories (Included)

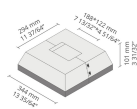
Base plates



110846023
110846023

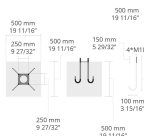
Accessories (To be ordered separately)

Bolt covers



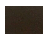


C3N2C
C3N2C

Anchor bolts



90CJ005
90CJ005

Project name				Type		Quantity	
Date			Note				
PAFD.R01.T002-H3-__							
Spigot / End diameter (S)	Height (H)	Product colors		Accessories			
	[H3] 10'	[HM1] Black		Included			
	[H4] 13.1'	[HM2] Dark gray		Base plates			
				[110846023] 110846023			
				To be ordered separately			
				Bolt covers			
				[C3N2C] C3N2C			
				Anchor bolts			
			[90CJ005] 90CJ005				
		[HM6] Bronze					
		[CC] Custom color (Please specify RAL code)	