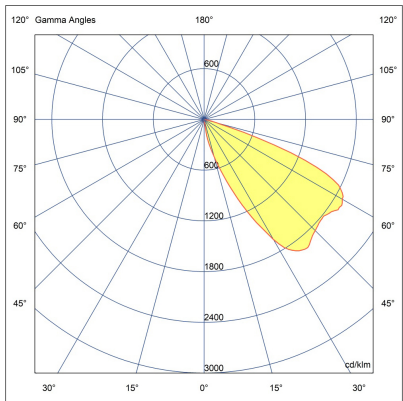
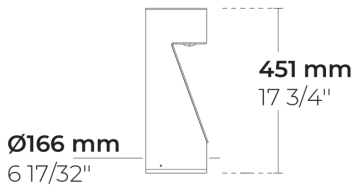


LB6042.545-US-SLFB-350-827-ONOFF



[SLFB]

Special linear,  
 Forward throw

Configuration

Light distribution	[SLFB] 120x47°
Delivered lumens flux	69 lm
Rated input power	3 W
Color temperature	2700 K CRI 80
Luminaire efficacy	23 lm/W
Lamp	1 LED
Color Deviation	3 SDCM
BUG rating	B0-U0-G0
Lifetime L90 (hour)	>102,000
Lifetime L80 (hour)	>102,000

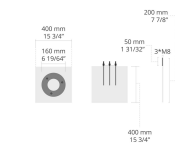
Options

Technical information

Mounting	Surface mountable
Housing	Corrosion resistant, extruded, marine grade aluminum housing
Finishing	Chromate conversion pretreatment followed by electrostatic powder coating
Fasteners	Stainless steel (AISI 304 / EN 1.4301 grade)
Lens / Reflector	High reflectance aluminium coating, multifaceted micro reflector
Glass / Diffusor	Tempered safety glass
Impact protection	IK05
Ingress protection	IP65
Input voltage	120-277V 50/60Hz
Insulation class	Class I
Weight	7.7 lbs
LED module	High power LEDs on metal-core PCB
Driver	Internal LED driver
Driver surge protection	3/3 kV
Power factor	> 0.40
Through wiring	Single power cord entry
Operating temperature	-25...50°C
Power cord	20" of outdoor use rated flexible power cord

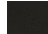




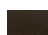

# Accessories (To be ordered separately)

## Anchor bolts



629J014  
629J014

Project name				Type		Quantity	
Date		Note					
LB6042.545-US-SLFB-350-827-ONOFF-__-__-__							

Light distribution	Rated input power	Color temperature	Control	Product colors
[SLFB] Special linear, Forward throw - 120x47°	[350] 3 W	[827] 2700 K CRI 80	[ONOFF] On/Off	[HM1] Black 
		[830] 3000 K CRI 80		[HM2] Dark gray 
		[740] 4000 K CRI 70		[HM3] Anthracite gray 
		[840] 4000 K CRI 80		[HM4] Light gray 
				[HM5] White 
				[HM6] Bronze 
				[CC]  Custom color (Please specify RAL code)
Height	Extras	Accessories ( <i>To be ordered separately</i> )		
[H0.45] 1.5'  [HC]	Luminaire body options	Anchor bolts		
	[DPC] Double powder coating	[629J014] 629J014		