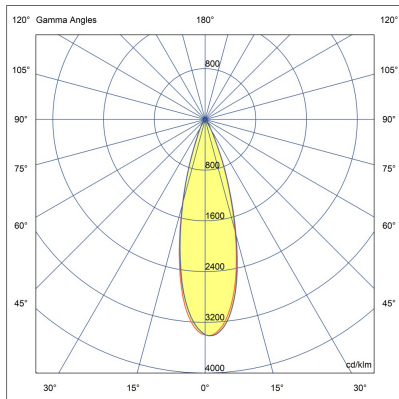
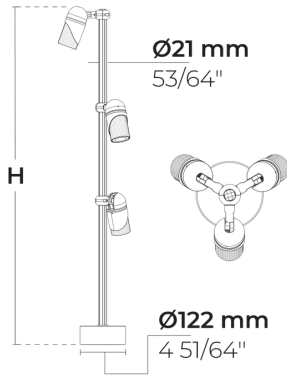


SPARK ST Trio

CE UK CA IK07 IP66



LB8043.529-EN-N-750-927-CC-36V-750-C3



[N]
Narrow

Variant

| | |
|------------------------|---------------|
| Light distribution | [N] 24° |
| Delivered lumens flux | 2130 lm |
| Rated input power | 30 W |
| Colour temperature | 2700 K CRI 90 |
| Luminaire efficacy | 71 lm/W |
| Lamp | 3 LED |
| MacAdam Ellipse | 3 SDCM |
| BUG rating | B3-U0-G0 |
| Lifetime L90B50 (hour) | >50000 |
| Lifetime L80B50 (hour) | >50000 |

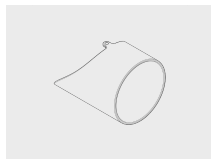
Options

Technical information

| | |
|-----------------------|--|
| Mounting | Surface mountable |
| Tilt angle | +90°/0° |
| Rotation angle | 0°/+355° |
| Housing | Corrosion resistant, marine grade aluminum housing |
| Finishing | Knurled surface in black anodized aluminum and body in chromate conversion pretreatment followed by electrostatic powder coating |
| Fasteners | Stainless steel (AISI 316L) |
| Gasket | EPDM gasket (Shore A 25-30) |
| Lens / Reflector | PMMA lens with high optical efficiency |
| Glass / Diffusor | Tempered safety glass |
| Impact protection | IK07 |
| Ingress protection | IP66 |
| Input voltage | 36 Vdc (Max) 750 mA |
| Insulation class | Class III |
| Weight | 2.5 kg |
| LED module | High efficacy COB LED with long time reliability |
| Driver | External LED driver |
| Through wiring | Single cable entry |
| Operating temperature | -40...50°C |
| Cable | 0.4 m of flexible cable |
| Notes | For 3000K 90CRI enquiries, please consult the factory. |

Accessories (To be ordered separately)

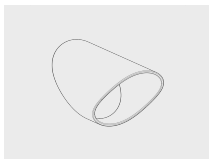
Optical accessories



Visor for SPARK

101652204

Optical accessories



Snoot for SPARK

101652202

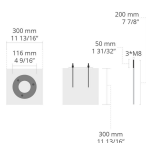
Mounting accessories



**DALI & On/Off
driver within an
IP67 box for
SPARK Trio**

007502123







Anchorage



6281004

6281004

| | | | | | |
|--|--|------|--|----------|--|
| Project name | | Type | | Quantity | |
| Date | | Note | | | |
| LB8043.529-EN-N-750-927-__-CC-36V-750-C3-__-__-__-__ | | | | | |

| Light distribution | Rated input power | Colour temperature | Control | Product colours |
|------------------------------------|---------------------------------------|--|---------|--|
| [N] Narrow - 24° | [750] 30 W | [927] 2700 K CRI 90 | | [HM1] Black  |
| [VN] Very narrow - 18° | [750] 33 W | [830] 3000 K CRI 80 | | [HM2] Dark grey  |
| [MN] Medium narrow - 36° | | [930] 3000 K CRI 90 | | [HM3] Anthracite grey  |
| [M] Medium - 60° | | | | [HM4] Light grey  |
| | | | | [HM5] White  |
| | | | | [CC]  Custom colour (Please specify RAL code) |
| Height | Extras | Accessories (<i>To be ordered separately</i>) | | |
| [H0.60] 60cm | Light output | Optical accessories | | |
| [H0.90] 90cm | [BCF] Blue Colour Filter | [101652204] Visor for SPARK | | |
| [HC] | [GCF] Green Colour Filter | [101652202] Snoot for SPARK | | |
| | [HNY] Honeycomb | Mounting accessories | | |
| | [OCF] Orange Colour Filter | [007502123] DALI & On/Off driver within an IP67 box for SPARK Trio | | |
| | [RCF] Red Colour Filter | Anchorage | | |
| | [YCF] Yellow Colour Filter | [628I004] 628I004 | | |
| | Luminaire body options | | | |
| | [DPC] Double powder coating | | | |