

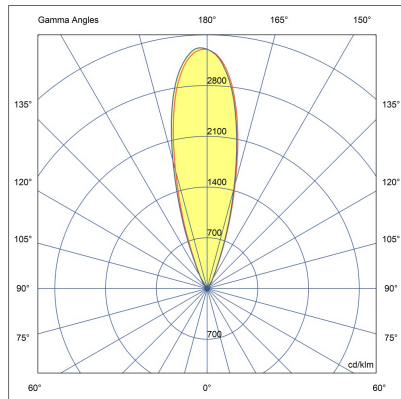
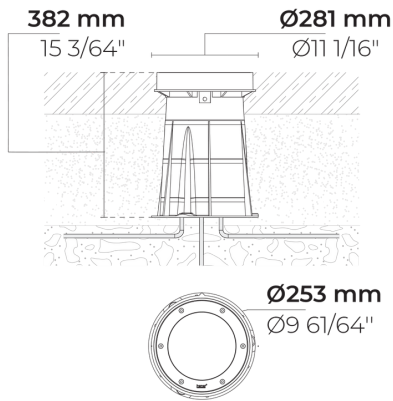
# ZEROX Hybrid



IK10 IP67



LR9005.695-EN-N-500-740-EN-C1-SS



[N]  
Narrow

## Variant

Light distribution	[N] 26°
Delivered lumens flux	3215 lm
Rated input power	28 W
Colour temperature	4000 K CRI 70
Luminaire efficacy	114 lm/W
Lamp	4 LED
MacAdam Ellipse	5 SDCM
Lifetime L90B50 (hour)	>72,600
Lifetime L80B50 (hour)	>72,600

## Options

## Technical information

Mounting	Ground recessed mountable
Housing	Corrosion resistant stainless steel housing (AISI 316L / EN 1.4571 grade)
Fasteners	Stainless steel (AISI 304 / EN 1.4301 grade)
Gasket	Silicone
Lens / Reflector	High reflectance aluminium coating
Glass / Diffuser	Tempered safety glass
Impact protection	IK10
Ingress protection	IP67
Input voltage	220-240V 50/60Hz
Insulation class	Class I
Weight	6.85 kg
LED module	Multi-chip high power LEDs on metal-core PCB
Driver	Internal LED driver
Driver surge protection	10/6 kV
Power factor	> 0.95
Through wiring	Single cable entry
Operating temperature	-40...50°C
Cable	0.3 m of rubber-sheathed cable
Notes	QUICK SHIP: Some variants will be delivered faster. Please consult the factory.

HPR Pazarlama A.Ş.  
Başkent OSB 22. Cd. No: 2, Malıköy, Temelli,  
Sincan, 06909 Ankara, Turkey  
+90 312 267 54 30  
info@hepergroup.com

HEPER Europe GmbH  
Ahornweg 5a, 58675  
Hemer, Germany  
+49 237 2901 2975  
infoEU@hepergroup.com

We reserve the right to change specifications without prior written notice. Edition: 10.05.2024.  
For current version visit [heperlighting.com](http://heperlighting.com). All flux (±7% tolerance) and power values (±10% tolerance) are derived following appropriate IES, CIE, and applicable standards.

## Accessories (To be ordered separately)

---

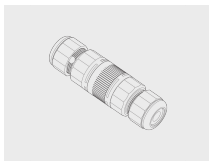
Mounting accessories



**Case removing  
vacuum**

160404012

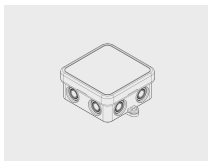
Mounting accessories



**Connector set - 5-  
pole**

141407400

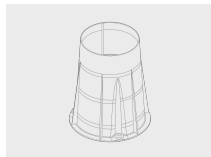
Mounting accessories



**Junction Box**

141901135


Mounting accessories



**Plastic case for  
ZEROX**

007501028

Project name		Type		Quantity	
Date		Note			
LR9005.695-EN-N-500-740-__-EN-C1-SS-__					

Light distribution	Rated input power	Colour temperature	Control	Product colours
<b>[N]</b> Narrow - 26°	<b>[500]</b> 28 W	<b>[740]</b> 4000 K CRI 70	<b>[ONOFF]</b> On/Off	<b>[SS]</b> Stainless steel 
<b>[S]</b> Spot - 7°	<b>[350]</b> 18 W	<b>[827]</b> 2700 K CRI 80  <b>[830]</b> 3000 K CRI 80  <b>[840]</b> 4000 K CRI 80	<b>[DALI]</b> DALI	
<b>Extras</b>	<b>Accessories (To be ordered separately)</b>			
<b>Consult the factory</b>	<b>Mounting accessories</b>			
<b>[UNI]</b> 120-277V 50/60Hz	<b>[160404012]</b> Case removing vacuum  <b>[141407400]</b> Connector set - 5-pole  <b>[141901135]</b> Junction Box  <b>[007501028]</b> Plastic case for ZEROX			