

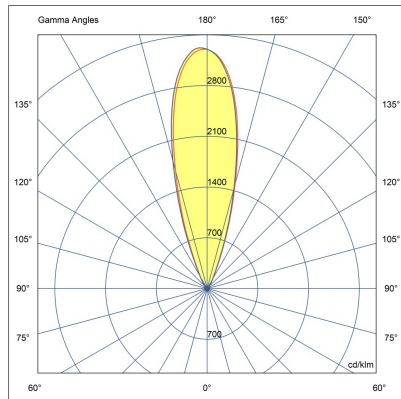
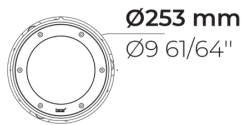
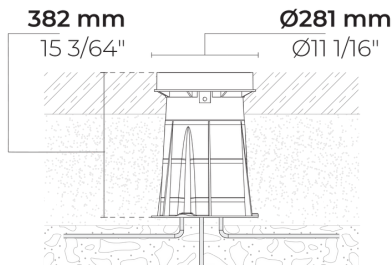
ZEROX Hybrid



IK10 IP67



LR9005.695-EN-N-350-840-EN-C1-SS



[N]
Narrow

Variant

Light distribution	[N] 26°
Delivered lumens flux	2154 lm
Rated input power	18 W
Colour temperature	4000 K CRI 80
Luminaire efficacy	107 lm/W
Lamp	4 LED
MacAdam Ellipse	5 SDCM
Lifetime L90B50 (hour)	>72,600
Lifetime L80B50 (hour)	>72,600

Options

Technical information

Mounting	Ground recessed mountable
Housing	Corrosion resistant stainless steel housing (AISI 316L / EN 1.4571 grade)
Fasteners	Stainless steel (AISI 304 / EN 1.4301 grade)
Gasket	Silicone
Lens / Reflector	High reflectance aluminium coating
Glass / Diffuser	Tempered safety glass
Impact protection	IK10
Ingress protection	IP67
Input voltage	220-240V 50/60Hz
Insulation class	Class I
Weight	6.85 kg
LED module	Multi-chip high power LEDs on metal-core PCB
Driver	Internal LED driver
Driver surge protection	10/6 kV
Power factor	> 0.95
Through wiring	Single cable entry
Operating temperature	-40...50°C
Cable	0.3 m of rubber-sheathed cable
Notes	QUICK SHIP: Some variants will be delivered faster. Please consult the factory.

HPR Pazarlama A.Ş.
Başkent OSB 22. Cd. No: 2, Malıköy, Temelli,
Sincan, 06909 Ankara, Turkey
+90 312 267 54 30
info@hepergroup.com

HEPER Europe GmbH
Ahornweg 5a, 58675
Hemer, Germany
+49 237 2901 2975
infoEU@hepergroup.com

We reserve the right to change specifications without prior written notice. Edition: 12.05.2024.
For current version visit heperlighting.com. All flux (±7% tolerance) and power values (±10% tolerance) are derived following appropriate IES, CIE, and applicable standards.

Accessories (To be ordered separately)

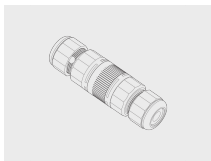
Mounting accessories



Case removing vacuum

160404012

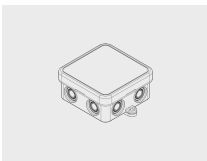
Mounting accessories



Connector set - 5-pole

141407400

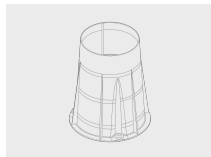
Mounting accessories



Junction Box

141901135


Mounting accessories



Plastic case for ZEROX

007501028

Project name		Type		Quantity	
Date		Note			
LR9005.695-EN-N-350-840-__-EN-C1-SS-__					

Light distribution	Rated input power	Colour temperature	Control	Product colours
[N] Narrow - 26°	[350] 18 W	[840] 4000 K CRI 80	[ONOFF] On/Off	[SS] Stainless steel 
[S] Spot - 7°	[500] 28 W	[827] 2700 K CRI 80 [830] 3000 K CRI 80 [740] 4000 K CRI 70	[DALI] DALI	
Extras	Accessories (To be ordered separately)			
Consult the factory	Mounting accessories			
[UNI] 120-277V 50/60Hz	[160404012] Case removing vacuum [141407400] Connector set - 5-pole [141901135] Junction Box [007501028] Plastic case for ZEROX			