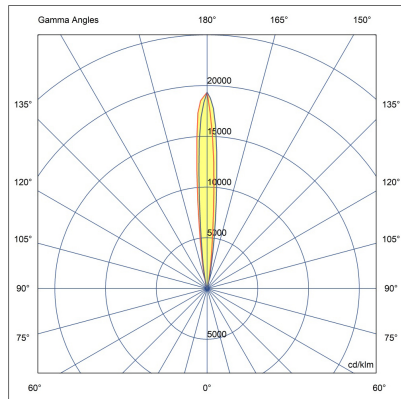
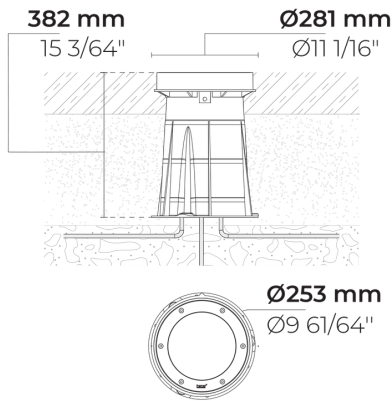


LR9005.695-EN-S-500-740-EN-C1-SS



[S]
Spot

Variant

Light distribution	[S] 7°
Delivered lumens flux	3215 lm
Rated input power	28 W
Colour temperature	4000 K CRI 70
Luminaire efficacy	114 lm/W
Lamp	4 LED
MacAdam Ellipse	5 SDCM
Lifetime L90B50 (hour)	>72,600
Lifetime L80B50 (hour)	>72,600

Options

Technical information

Mounting	Ground recessed mountable
Housing	Corrosion resistant stainless steel housing (AISI 316L / EN 1.4571 grade)
Fasteners	Stainless steel (AISI 304 / EN 1.4301 grade)
Gasket	Silicone
Lens / Reflector	High reflectance aluminium coating
Glass / Diffuser	Tempered safety glass
Impact protection	IK10
Ingress protection	IP67
Input voltage	220-240V 50/60Hz
Insulation class	Class I
Weight	6.85 kg
LED module	Multi-chip high power LEDs on metal-core PCB
Driver	Internal LED driver
Driver surge protection	10/6 kV
Power factor	> 0.95
Through wiring	Single cable entry
Operating temperature	-40...50°C
Cable	0.3 m of rubber-sheathed cable
Notes	QUICK SHIP: Some variants will be delivered faster. Please consult the factory.

Accessories (To be ordered separately)

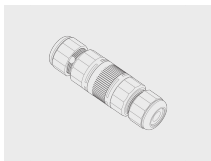
Mounting accessories



**Case removing
vacuum**

160404012

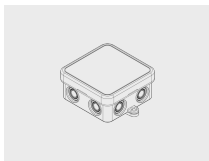
Mounting accessories



**Connector set - 5-
pole**

141407400

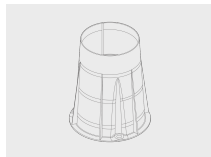
Mounting accessories



Junction Box

141901135


Mounting accessories



**Plastic case for
ZEROX**

007501028

Project name		Type		Quantity	
Date		Note			
LR9005.695-EN-S-500-740-__-EN-C1-SS-__					

Light distribution	Rated input power	Colour temperature	Control	Product colours
[S] Spot - 7°	[500] 28 W	[740] 4000 K CRI 70	[ONOFF] On/Off	[SS] Stainless steel 
[N] Narrow - 26°	[350] 18 W	[827] 2700 K CRI 80 [830] 3000 K CRI 80 [840] 4000 K CRI 80	[DALI] DALI	
Extras	Accessories (<i>To be ordered separately</i>)			
Consult the factory	Mounting accessories			
[UNI] 120-277V 50/60Hz	[160404012] Case removing vacuum [141407400] Connector set - 5-pole [141901135] Junction Box [007501028] Plastic case for ZEROX			