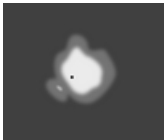
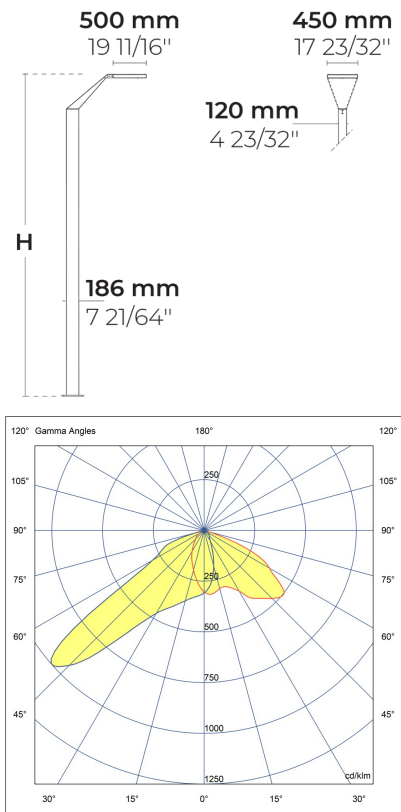


# WINGS AFX 2 Module



LL2012.862-US-P4-500-740-ONOFF



[P4]

Pedestrian crosswalk distribution

HEPER USA LLC  
W227 N546 Westmound Drive Waukesha, 53186  
Wisconsin, United States  
+1 312 910 9740  
infoUS@hepergroup.com

## Configuration

Light distribution	[P4] 20x78°
Delivered lumens flux	6855 lm
Rated input power	48 W
Color temperature	4000 K CRI 70
Luminaire efficacy	142 lm/W
Lamp	32 LED
Color Deviation	4 SDCM
BUG rating	B2-U1-G1
Lifetime L90 (hour)	>102,000
Lifetime L80 (hour)	>102,000

## Options

## Technical information

Mounting	Surface mountable
Housing	Corrosion resistant, marine grade aluminum housing
Finishing	Chromate conversion pretreatment followed by electrostatic powder coating
Fasteners	Stainless steel (AISI 304 / EN 1.4301 grade)
Gasket	Liquid silicone
Lens / Reflector	PMMA lens with high optical efficiency
Glass / Diffuser	Tempered safety glass
Impact protection	IK08
Ingress protection	IP66
Input voltage	120-277V 50/60Hz
Insulation class	Class I
Weight	110.44 lbs (10'), 125.92 lbs (13')
LED module	High power LEDs on metal-core PCB
Driver	Internal LED driver
Through wiring	Single power cord entry
Operating temperature	-40...50°C
Power cord	20" of outdoor use rated flexible power cord
Packing box dimensions	17 23/32"*3 5/32"*22 53/64"
Pole detail	Poles are supplied with flange plate. Flange cover and anchorage can be ordered separately. Embedded base is optional

We reserve the right to change specifications without prior written notice. Edition: 18.05.2024. For current version visit [heperlighting.com](http://heperlighting.com). All flux ( $\pm 7\%$  tolerance) and power values ( $\pm 10\%$  tolerance) are derived following appropriate IES, CIE, and applicable standards.

# Poles (Included)

---

## Product specific poles with base plate



Configuration code	Height	Diameter / Dimensions	Spigot / End diameter
PAFD.R01.T002-H3	10'	7.3x4.7"	
PAFD.R01.T002-H4	13.1'	7.3x4.7"	

Project name				Type		Quantity	
Date		Note					

**LL2012.862-US-P4-500-740-ONOFF-\_\_-\_\_-\_\_**

Light distribution	Rated input power	Color temperature	Control	Product colors
<b>[P4]</b> Pedestrian crosswalk distribution - 20x78°	<b>[500]</b> 48 W	<b>[740]</b> 4000 K CRI 70	<b>[ONOFF]</b> On/Off	<b>[HM1]</b> Black
<b>[T1]</b> Type I - 111x48°	<b>[350]</b> 34 W	<b>[827]</b> 2700 K CRI 80		<b>[HM2]</b> Dark gray
<b>[T2]</b> Type II - 133x48°	<b>[700]</b> 67 W	<b>[830]</b> 3000 K CRI 80		<b>[HM3]</b> Anthracite gray
<b>[T2]</b> Type II - 149x54°		<b>[840]</b> 4000 K CRI 80		<b>[HM4]</b> Light gray
<b>[T3]</b> Type III - 143x63°				<b>[HM5]</b> White
<b>[T4]</b> Type IV - 117x64°				<b>[HM6]</b> Bronze
<b>[T5]</b> Type V - 117°				<b>[CC]</b> Custom color (Please specify RAL code)
Height	Extras			
<b>[H3]</b> 10'	<b>Luminaire body options</b>			
<b>[H4]</b> 13.1'	<b>[DPC]</b> Double powder coating			
<b>[HC]</b>				