

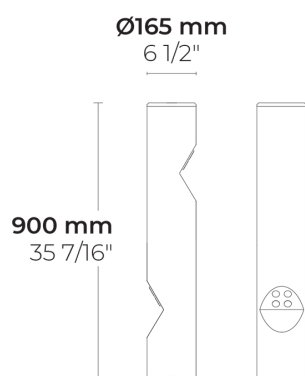
# VESTA S L 8 LED



LB6045.500-EN-SLFB-350-740-ONOFF



PHASED-  
OUT



[SLFB]

Special linear,  
Forward throw

## Configuration

Light distribution	[SLFB] 85x90°
Delivered lumens flux	800 lm
Rated input power	10 W
Color temperature	4000 K CRI 70
Luminaire efficacy	80 lm/W
Lamp	8 LED
Color Deviation	3 SDCM
Lifetime L90 (hour)	>145,000
Lifetime L80 (hour)	>145,000

## Options

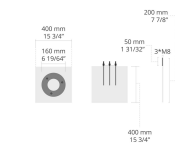
## Technical information

Housing	Corrosion resistant, extruded, marine grade aluminum housing
Finishing	Chromate conversion pretreatment followed by electrostatic powder coating
Fasteners	Stainless steel (AISI 304 / EN 1.4301 grade)
Lens / Reflector	PMMA lens with high optical efficiency
Glass / Diffusor	Tempered safety glass
Impact protection	IK05
Ingress protection	IP65
Input voltage	220-240V 50/60Hz
Insulation class	Class I
Weight	5.61 kg
LED module	High power LEDs on metal-core PCB
Driver	Internal LED driver
Driver surge protection	1/1 kV
Power factor	> 0.60
Through wiring	Single power cord entry
Operating temperature	-40...50°C
Power cord	20" of outdoor use rated flexible power cord

# Accessories (To be ordered separately)








---

## Anchor bolts



629J014  
629J014

Project name						Type		Quantity	
Date			Note						
LB6045.500-EN-SLFB-350-740-ONOFF-__-__-__									

Light distribution	Rated input power	Color temperature	Control	Product colors
[SLFB] Special linear, Forward throw - 85x90°	[350] 10 W	[740] 4000 K CRI 70	[ONOFF] On/Off	[HM1] Black 
		[830] 3000 K CRI 80		[HM2] Dark gray 
				[HM3] Anthracite gray 
				[HM4] Light gray 
				[HM5] White 
				[HM6] Bronze 
				[CC]  Custom color (Please specify RAL code)
Extras	Accessories ( <i>To be ordered separately</i> )			
Consult the factory	Anchor bolts			
[UNI] 120-277V 50/60Hz	[629J014] 629J014			
Luminaire body options				
[DPC] Double powder coating				