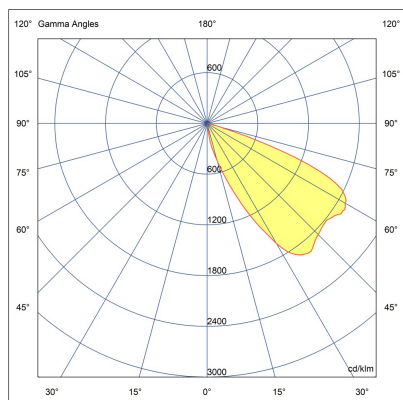
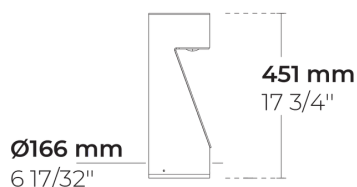




LB6042.545-US-SLFB-350-830-ONOFF-UNI-C1



[SLFB]
Special linear,
Forward throw

Variant

| | |
|-------------------------------|----------------|
| Light distribution | [SLFB] 120x47° |
| Delivered lumens flux | 69 lm |
| Rated input power | 3 W |
| Colour temperature | 3000 K CRI 80 |
| Luminaire efficacy | 23 lm/W |
| Lamp | 1 LED |
| MacAdam Ellipse | 3 SDCM |
| BUG rating | B0-U0-G0 |
| Lifetime L90B50 (hour) | >102,000 |
| Lifetime L80B50 (hour) | >102,000 |

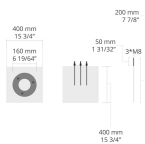
Options

Technical information

| | |
|--------------------------------|---|
| Mounting | Surface mountable |
| Housing | Corrosion resistant, extruded, marine grade aluminum housing |
| Finishing | Chromate conversion pretreatment followed by electrostatic powder coating |
| Fasteners | Stainless steel (AISI 304 / EN 1.4301 grade) |
| Lens / Reflector | High reflectance aluminium coating, multifaceted micro reflector |
| Glass / Diffusor | Tempered safety glass |
| Impact protection | IK05 |
| Ingress protection | IP65 |
| Input voltage | 120-277V 50/60Hz |
| Insulation class | Class I |
| Weight | 7.7 lbs |
| LED module | High power LEDs on metal-core PCB |
| Driver | Internal LED driver |
| Driver surge protection | 3/3 kV |
| Power factor | > 0.40 |
| Through wiring | Single cable entry |
| Operating temperature | -25...50°C |
| Cable | 0.5 m of flexible cable |

Accessories (To be ordered separately)








Anchorage



629J014

629J014

| | | | | | |
|--|--|------|--|----------|--|
| Project name | | Type | | Quantity | |
| Date | | Note | | | |
| LB6042.545-US-SLFB-350-830-ONOFF-UNI-C1-__-__-__ | | | | | |

| Light distribution | Rated input power | Colour temperature | Control | Product colours | |
|--|--|---|--------------------------|---|---|
| [SLFB] Special linear, Forward throw - 120x47° | [350] 3 W | [830] 3000 K CRI 80 | [ONOFF] On/Off | [HM1] Black |  |
| | | [827] 2700 K CRI 80 | | [HM2] Dark grey |  |
| | | [740] 4000 K CRI 70 | | [HM3] Anthracite grey |  |
| | | [840] 4000 K CRI 80 | | [HM4] Light grey |  |
| | | | | [HM5] White |  |
| | | | | [HM6] Bronze |  |
| | | | | [CC] Custom colour (Please specify RAL code) |  |
| Height | Extras | Accessories (<i>To be ordered separately</i>) | | | |
| [H0.45] 45cm [HC] | Luminaire body options | Anchorages | | | |
| | [DPC] Double powder coating | [629J014] 629J014 | | | |