

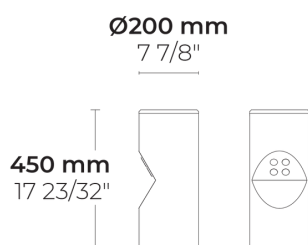
VESTA 4 LED



LB6018.500-US-SLFB-350-830-ONOFF



PHASED-
OUT



[SLFB]

Special linear,
Forward throw

Configuration

Light distribution	[SLFB] 85x90°
Delivered lumens flux	370 lm
Rated input power	6 W
Color temperature	3000 K CRI 80
Luminaire efficacy	62 lm/W
Lamp	4 LED
Color Deviation	3 SDCM
Lifetime L90 (hour)	>145,000
Lifetime L80 (hour)	>145,000

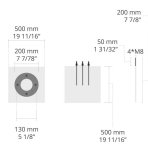
Options

Technical information

Housing	Corrosion resistant, extruded, marine grade aluminum housing
Finishing	Chromate conversion pretreatment followed by electrostatic powder coating
Fasteners	Stainless steel (AISI 304 / EN 1.4301 grade)
Lens / Reflector	PMMA lens with high optical efficiency
Glass / Diffusor	Tempered safety glass
Impact protection	IK05
Ingress protection	IP65
Input voltage	120-277V 50/60Hz
Insulation class	Class I
Weight	11.7 lbs
LED module	High power LEDs on metal-core PCB
Driver	Internal LED driver
Driver surge protection	3/3 kV
Power factor	> 0.40
Through wiring	Single power cord entry
Operating temperature	-40...50°C
Power cord	20" of outdoor use rated flexible power cord

Accessories (To be ordered separately)

Anchor bolts



623J014

623J014

Project name				Type		Quantity	
Date		Note					

LB6018.500-US-SLFB-350-830-ONOFF-__-__

Light distribution	Rated input power	Color temperature	Control	Product colors
[SLFB] Special linear, Forward throw - 85x90°	[350] 6 W	[830] 3000 K CRI 80	[ONOFF] On/Off	[HM1] Black
		[740] 4000 K CRI 70		[HM2] Dark gray
				[HM3] Anthracite gray
				[HM4] Light gray
				[HM5] White
				[HM6] Bronze
				[CC] Custom color (Please specify RAL code)
Extras	Accessories (<i>To be ordered separately</i>)			
Luminaire body options	Anchor bolts			
	[623J014] 623J014			
[DPC] Double powder coating				