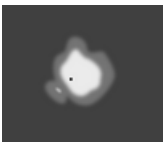


# PRIFMA W AFX 1 Module



LW2042.861-EN-P4-500-827



[P4]

Pedestrian crosswalk  
distribution

## Configuration

|                       |               |
|-----------------------|---------------|
| Light distribution    | [P4] 20x78°   |
| Delivered lumens flux | 2915 lm       |
| Rated input power     | 25 W          |
| Color temperature     | 2700 K CRI 80 |
| Luminaire efficacy    | 116 lm/W      |
| Lamp                  | 16 LED        |
| Color Deviation       | 3 SDCM        |
| BUG rating            | B1-U0-G1      |
| Lifetime L90 (hour)   | >102,000      |
| Lifetime L80 (hour)   | >102,000      |

## Options

## Technical information

|                         |   |
|-------------------------|---|
| Mounting                | Wall mountable  |
| Housing                 | Corrosion resistant, marine grade aluminum housing                        |
| Finishing               | Chromate conversion pretreatment followed by electrostatic powder coating |
| Fasteners               | Stainless steel (AISI 304 / EN 1.4301 grade)                              |
| Gasket                  | Liquid silicone   |
| Lens / Reflector        | PMMA lens with high optical efficiency                                    |
| Glass / Diffusor        | Tempered safety glass   |
| Impact protection       | IK08  |
| Ingress protection      | IP66  |
| Input voltage           | 220-240V 50/60Hz  |
| Insulation class        | Class I   |
| Weight                  | 4.30 kg   |
| LED module              | High power LEDs on metal-core PCB   |
| Driver                  | Internal LED driver   |
| Driver surge protection | 6/4 kV  |
| Power factor            | > 0.96  |
| Through wiring          | Single power cord entry   |
| Operating temperature   | -40...50°C  |
| Power cord              | 20" of outdoor use rated flexible power cord                              |
| Packing box dimensions  | 19*8*47 cm  |

|  |  |      |  |      |  |          |  |
|--|--|------|--|------|--|----------|--|
| Project name                               |  |      |  | Type |  | Quantity |  |
| Date                                       |  | Note |  |      |  |          |  |
| LW2042.861-EN-P4-500-827-__-__-__-__-__-__ |  |      |  |      |  |          |  |

| Light distribution  | Rated input power    | Color temperature             | Control                  | Product colors  |
|---|----------------------|-------------------------------|--------------------------|---|
| <b>[P4]</b><br>Pedestrian crosswalk distribution - 20x78° | <b>[500]</b><br>25 W | <b>[827]</b><br>2700 K CRI 80 | <b>[ONOFF]</b><br>On/Off | <b>[HM1]</b><br>Black                                 |
| <b>[T1]</b><br>Type I - 111x48°                           | <b>[350]</b><br>18 W | <b>[830]</b><br>3000 K CRI 80 | <b>[DALI]</b><br>DALI    | <b>[HM2]</b><br>Dark gray                             |
| <b>[T2]</b><br>Type II - 133x48°                          | <b>[700]</b><br>35 W | <b>[740]</b><br>4000 K CRI 70 |                          | <b>[HM3]</b><br>Anthracite gray                       |
| <b>[T2]</b><br>Type II - 149x54°                          |                      | <b>[840]</b><br>4000 K CRI 80 |                          | <b>[HM4]</b><br>Light gray                            |
| <b>[T3]</b><br>Type III - 143x63°                         |                      |                               |                          | <b>[HM5]</b><br>White                                 |
| <b>[T4]</b><br>Type IV - 117x64°                          |                      |                               |                          | <b>[HM6]</b><br>Bronze                                |
| <b>[T5]</b><br>Type V - 117°                              |                      |                               |                          | <b>[CC]</b><br>Custom color (Please specify RAL code) |
| <b>Extras</b>   |                      |                               |                          |   |
| <b>Light output</b>                                       |                      |                               |                          |   |
| <b>[BS]</b><br>Backlight Shield                           |                      |                               |                          |   |
| <b>[CLO]</b><br>Constant light output                     |                      |                               |                          |   |
| <b>Consult the factory</b>                                |                      |                               |                          |   |
| <b>[UNI]</b><br>120-277V 50/60Hz                          |                      |                               |                          |   |
| <b>Luminaire body options</b>                             |                      |                               |                          |   |
| <b>[DPC]</b><br>Double powder coating                     |                      |                               |                          |   |