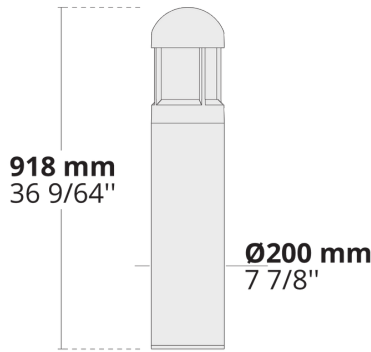




LB6011.513-US-SYM-4L-700-740-ONOFF-UNI-C1



[SYM-4L]

Symmetric, Special effect: 4 lines

Variant

| | |
|------------------------|---------------|
| Light distribution | [SYM-4L] 360° |
| Delivered lumens flux | 1551 lm |
| Rated input power | 20 W |
| Colour temperature | 4000 K CRI 70 |
| Luminaire efficacy | 78 lm/W |
| Lamp | 8 LED |
| MacAdam Ellipse | 3 SDCM |
| BUG rating | B1-U0-G1 |
| Lifetime L90B50 (hour) | >145,000 |
| Lifetime L80B50 (hour) | >145,000 |

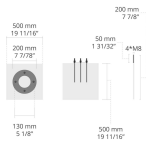
Options

Technical information

| | |
|-------------------------|---|
| Housing | Corrosion resistant, extruded, marine grade aluminum housing |
| Finishing | Chromate conversion pretreatment followed by electrostatic powder coating |
| Fasteners | Stainless steel (AISI 304 / EN 1.4301 grade) |
| Gasket | EPDM gasket (Shore A 50) |
| Lens / Reflector | PMMA lens with high optical efficiency |
| Glass / Diffusor | Custom Design PMMA Diffusor |
| Impact protection | IK08 |
| Ingress protection | IP65 |
| Input voltage | 120-277V 50/60Hz |
| Insulation class | Class I |
| Weight | 22 lbs |
| LED module | High power LEDs on metal-core PCB |
| Driver | Internal LED driver |
| Driver surge protection | 1/1 kV |
| Power factor | > 0.90 |
| Through wiring | Single cable entry |
| Operating temperature | -30...50°C |
| Cable | 0.5 m of flexible cable |

Accessories (To be ordered separately)






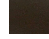

Anchorage



623J014

623J014

| | | | | | |
|---|--|------|--|----------|--|
| Project name | | Type | | Quantity | |
| Date | | Note | | | |
| LB6011.513-US-SYM-4L-700-740-ONOFF-UNI-C1-__-__ | | | | | |

| Light distribution | Rated input power | Colour temperature | Control | Product colours |
|---|---|------------------------|-------------------|---|
| [SYM-4L] Symmetric, Special effect: 4 lines - 360° | [700] 20 W | [740] 4000 K CRI 70 | [ONOFF] On/Off | [HM1] Black  |
| | | [830] 3000 K CRI 80 | | [HM2] Dark grey  |
| | | | | [HM3] Anthracite grey  |
| | | | | [HM4] Light grey  |
| | | | | [HM5] White  |
| | | | | [HM6] Bronze  |
| | | | | [CC]  Custom colour (Please specify RAL code) |
| Extras | Accessories (<i>To be ordered separately</i>) | | | |
| Luminaire body options | Anchorages | | | |
| [DPC] Double powder coating | [623J014] 623J014 | | | |