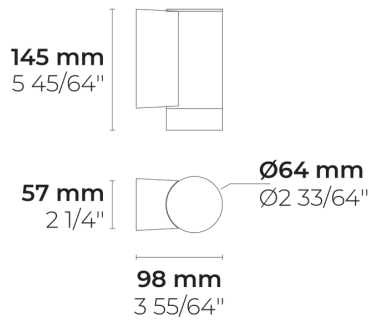
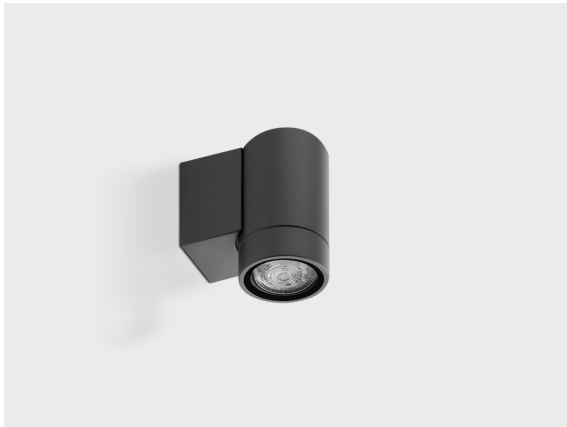


PINA W

LW8034.003-US



[VN]

Very narrow - NEMA Type 1 - 10°



[N]

Narrow - NEMA Type 2 - 25°



[MN]

Medium narrow - NEMA Type 3 - 36°



[M]

Medium - NEMA Type 4 - 60°

Configurations

Light distribution	[VN] 10°, [N] 25°, [MN] 36°, [M] 60°
Delivered lumens flux	368 - 410 lm
Rated input power	7.5 W
Color temperature	2700 K CRI 90, 3000 K CRI 90, 4000 K CRI 90
BUG rating	B1-U0-G0

Options

Control	On/Off, Phase dimming
Product colors	

Technical information








Mounting	Wall mountable
Housing	Corrosion resistant, marine grade aluminum housing
Finishing	Chromate conversion pretreatment followed by electrostatic powder coating
Fasteners	Stainless steel (AISI 304 / EN 1.4301 grade)
Gasket	Silicone
Glass / Diffusor	Tempered safety glass
Impact protection	IK06
Ingress protection	IP65
Input voltage	120-277V 50/60Hz
Insulation class	Class I
Weight	1.5 lbs
Driver	Internal LED driver
Power factor	> 0.93
Through wiring	Single power cord entry
Power cord	8" of flexible power cord
Packing box dimensions	4 21/64" * 7 3/32" * 2 3/4"

Notes

Louver Snap Lens can not be combined with other lenses.

Project name		Type		Quantity	
Date		Note			

LW8034.003-US-____-____-____-____-____

Light distribution	Rated input power	Color temperature	Control	Product colors
[VN] Very narrow - NEMA Type 1 - 10° [N] Narrow - NEMA Type 2 - 25° [MN] Medium narrow - NEMA Type 3 - 36° [M] Medium - NEMA Type 4 - 60°	[I] 7.5 W	[927] 2700 K CRI 90 [930] 3000 K CRI 90 [940] 4000 K CRI 90	[ONOFF] On/Off [PD] Phase dimming	[HM1]  Black [HM2]  Dark gray [HM3]  Anthracite gray [HM4]  Light gray [HM5]  White [HM6]  Bronze [CC]  Custom color (Please specify RAL code)

Configuration code	Light distribution	Delivered lumens flux	Rated input power	Color temperature	Control
LW8034.003-US-VN-927	[VN] Very narrow - NEMA Type 1 - 10°	368 lm	7.5 W	2700 K CRI 90	On/Off, Phase dimming
LW8034.003-US-VN-930	[VN] Very narrow - NEMA Type 1 - 10°	390 lm	7.5 W	3000 K CRI 90	On/Off, Phase dimming
LW8034.003-US-VN-940	[VN] Very narrow - NEMA Type 1 - 10°	410 lm	7.5 W	4000 K CRI 90	On/Off, Phase dimming
LW8034.003-US-MN-930	[N] Narrow - NEMA Type 2 - 25°	390 lm	7.5 W	3000 K CRI 90	On/Off, Phase dimming
LW8034.003-US-MN-940	[N] Narrow - NEMA Type 2 - 25°	410 lm	7.5 W	4000 K CRI 90	On/Off, Phase dimming
LW8034.003-US-N-927	[N] Narrow - NEMA Type 2 - 25°	368 lm	7.5 W	2700 K CRI 90	On/Off, Phase dimming
LW8034.003-US-MN-927	[MN] Medium narrow - NEMA Type 3 - 36°	368 lm	7.5 W	2700 K CRI 90	On/Off, Phase dimming
LW8034.003-US-N-930	[MN] Medium narrow - NEMA Type 3 - 36°	390 lm	7.5 W	3000 K CRI 90	On/Off, Phase dimming
LW8034.003-US-N-940	[MN] Medium narrow - NEMA Type 3 - 36°	410 lm	7.5 W	4000 K CRI 90	On/Off, Phase dimming
LW8034.003-US-M-927	[M] Medium - NEMA Type 4 - 60°	368 lm	7.5 W	2700 K CRI 90	On/Off, Phase dimming
LW8034.003-US-M-930	[M] Medium - NEMA Type 4 - 60°	390 lm	7.5 W	3000 K CRI 90	On/Off, Phase dimming
LW8034.003-US-M-940	[M] Medium - NEMA Type 4 - 60°	410 lm	7.5 W	4000 K CRI 90	On/Off, Phase dimming