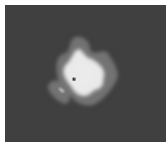
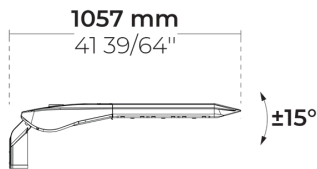


# D-LIGHT V2 AFX 3 Module

LL2024.863-EN



IK08 IP66



[P4]

Special pedestrian road distribution - right side traffic - 20x78°



[T1]

Type I, Asymmetric, Side throw - 111x48°



[T2]

Type II, Asymmetric, Side throw - 133x48°



[T2-2]

Type II, Asymmetric, Side throw - 149x54°



[T3]

Type III, Asymmetric, Side throw - 143x63°



[T4]

Type IV, Asymmetric, Forward throw - 117x64°



[T5]

Type V, Symmetric - 117°

## Variants

<b>Light distribution</b>	[P4] 20x78°, [T1] 111x48°, [T2] 133x48°, [T2-2] 149x54°, [T3] 143x63°, [T4] 117x64°, [T5] 117°
<b>Delivered lumens flux</b>	5675 - 13800 lm
<b>Rated input power</b>	50 - 100 W
<b>Colour temperature</b>	3000 K CRI 70, 3000 K CRI 80, 4000 K CRI 70
<b>BUG rating</b>	B2-U0-G1, B2-U1-G1, B3-U1-G2, B3-U1-G1, B1-U0-G1, B2-U1-G2, B1-U1-G1, B2-U0-G0, B3-U0-G0, B3-U0-G1
<b>Lifetime L90B50 (hour)</b>	>102, 000
<b>Lifetime L80B50 (hour)</b>	>102, 000

## Options

<b>Control</b>	On/Off, DALI, AutoDIM, StepDIM
<b>Product colours</b>	  

## Extras


<b>Light output</b>	Constant light output
<b>Consult the factory</b>	Class II, 120-277V 50/60Hz

## Technical information


<b>Mounting</b>	Direct pole or side bracket mountable. Spigot: Ø60 mm x 100 mm
<b>Tilt angle</b>	+15°/-15°
<b>Housing</b>	Corrosion resistant, die-cast, marine grade aluminum housing
<b>Finishing</b>	Chromate conversion pretreatment followed by electrostatic powder coating
<b>Fasteners</b>	Stainless steel (AISI 304 / EN 1.4301 grade)
<b>Gasket</b>	EPDM gasket (Shore A 20-25)
<b>Lens / Reflector</b>	PMMA lens with high optical efficiency
<b>Glass / Diffusor</b>	Tempered safety glass
<b>Impact protection</b>	IK08
<b>Ingress protection</b>	IP66
<b>Input voltage</b>	220-240V 50/60Hz
<b>Insulation class</b>	Class I
<b>Weight</b>	8 kg
<b>LED module</b>	High power LEDs on metal-core PCB
<b>Driver</b>	Internal LED driver
<b>Driver surge protection</b>	10/6 kV
<b>Power factor</b>	< 0.95
<b>Through wiring</b>	Single cable entry
<b>Operating temperature</b>	-40...50°C
<b>Cable</b>	0.2 m of flexible cable

## Poles (To be ordered separately)


### Conical aluminum poles with flange plate

	Product code	Height	Diameter / Dimensions	Spigot diameter
	PAFK.D114	3m, 4m, 5m m	Ø114mm	Ø60mm, Ø76mm mm
	PAFK.D122	4m, 5m, 6m m	Ø122mm	Ø60mm, Ø76mm mm
	PAFK.D148	6m, 7m, 8m m	Ø148mm	Ø60mm, Ø76mm mm
	PAFK.D165	6m, 7m, 8m, 9m m	Ø165mm	Ø76mm, Ø90mm mm
	PAFK.D180	10m, 8m, 9m m	Ø180mm	Ø76mm, Ø90mm mm
	PAFK.D200	10m, 11m, 12m m	Ø200mm	Ø76mm, Ø90mm mm

### Conical aluminum poles with embedded base




	Product code	Height	Diameter / Dimensions	Spigot diameter
	PABK.D114	3m, 4m, 5m m	Ø114mm	Ø60mm, Ø76mm mm
	PABK.D122	4m, 5m, 6m, 7m m	Ø122mm	Ø60mm, Ø76mm mm
	PABK.D148	6m, 7m, 8m m	Ø148mm	Ø60mm, Ø76mm mm
	PABK.D165	6m, 7m, 8m, 9m m	Ø165mm	Ø76mm, Ø90mm mm
	PABK.D180	10m, 8m, 9m m	Ø180mm	Ø76mm, Ø90mm mm
	PABK.D200	10m, 11m, 12m m	Ø200mm	Ø76mm, Ø90mm mm

### Cylindrical aluminum poles with flange plate

	Product code	Height	Diameter / Dimensions	Spigot diameter
	PAFC.D114	3m, 4m, 5m m	Ø114mm	Ø114mm mm
	PAFC.D122	3m, 4m, 5m, 6m m	Ø122mm	Ø122mm mm
	PAFC.D148	6m, 7m, 8m m	Ø148mm	Ø148mm mm
	PAFC.D165	6m, 7m, 8m, 9m m	Ø165mm	Ø165mm mm

Project name		Type		Quantity	
Date		Note			

**LL2024.863-EN-**\_\_\_\_-\_\_\_\_-\_\_\_\_-\_\_\_\_**-EN-C1-**\_\_\_\_-\_\_\_\_-\_\_\_\_

Light distribution	Rated input power	Colour temperature	Control	Product colours
<p><b>[P4]</b> Special pedestrian road distribution-right side traffic - 20x78°</p> <p><b>[T1]</b> Type I, Asymmetric, Side throw - 111x48°</p> <p><b>[T2]</b> Type II, Asymmetric, Side throw - 133x48°</p> <p><b>[T2-2]</b> Type II, Asymmetric, Side throw - 149x54°</p> <p><b>[T3]</b> Type III, Asymmetric, Side throw - 143x63°</p> <p><b>[T4]</b> Type IV, Asymmetric, Forward throw - 117x64°</p> <p><b>[T5]</b> Type V, Symmetric - 117°</p>	<p><b>[350]</b> 50 W</p> <p><b>[500]</b> 72 W</p> <p><b>[700]</b> 100 W</p>	<p><b>[730]</b> 3000 K CRI 70</p> <p><b>[830]</b> 3000 K CRI 80</p> <p><b>[740]</b> 4000 K CRI 70</p>	<p><b>[ONOFF]</b> On/Off</p> <p><b>[DALI]</b> DALI</p> <p><b>[AUTO]</b> AutoDIM</p> <p><b>[STEP]</b> StepDIM</p>	<p><b>[HM3]</b>  Anthracite grey</p> <p><b>[HM4]</b>  Light grey</p> <p><b>[CC]</b>  Custom colour (Please specify RAL code)</p>
<b>Extras</b>				
<b>Light output</b>				
<b>[CLO]</b> Constant light output				
<b>Consult the factory</b>				
<b>[C2]</b> Class II				
<b>[UNI]</b> 120-277V 50/60Hz				

Variant code	Light distribution	Delivered lumens flux	Rated input power	Colour temperature	Control
LL2024.863-EN-T1-350-730	[T1] Type I, Asymmetric, Side throw - 111x48°	6800 lm	50 W	3000 K CRI 70	On/Off, DALI, AutoDIM, StepDIM
LL2024.863-EN-T1-350-740	[T1] Type I, Asymmetric, Side throw - 111x48°	7240 lm	50 W	4000 K CRI 70	On/Off, DALI, AutoDIM, StepDIM
LL2024.863-EN-T1-350-830	[T1] Type I, Asymmetric, Side throw - 111x48°	6350 lm	50 W	3000 K CRI 80	On/Off, DALI, AutoDIM, StepDIM
LL2024.863-EN-T1-500-730	[T1] Type I, Asymmetric, Side throw - 111x48°	9620 lm	72 W	3000 K CRI 70	On/Off, DALI, AutoDIM, StepDIM
LL2024.863-EN-T1-500-740	[T1] Type I, Asymmetric, Side throw - 111x48°	10150 lm	72 W	4000 K CRI 70	On/Off, DALI, AutoDIM, StepDIM
LL2024.863-EN-T1-500-830	[T1] Type I, Asymmetric, Side throw - 111x48°	9040 lm	72 W	3000 K CRI 80	On/Off, DALI, AutoDIM, StepDIM
LL2024.863-EN-T1-700-730	[T1] Type I, Asymmetric, Side throw - 111x48°	12410 lm	100 W	3000 K CRI 70	On/Off, DALI, AutoDIM, StepDIM
LL2024.863-EN-T1-700-740	[T1] Type I, Asymmetric, Side throw - 111x48°	13120 lm	100 W	4000 K CRI 70	On/Off, DALI, AutoDIM, StepDIM
LL2024.863-EN-T1-700-830	[T1] Type I, Asymmetric, Side throw - 111x48°	11715 lm	100 W	3000 K CRI 80	On/Off, DALI, AutoDIM, StepDIM
LL2024.863-EN-T2-350-730	[T2] Type II, Asymmetric, Side throw - 133x48°	6350 lm	50 W	3000 K CRI 70	On/Off, DALI, AutoDIM, StepDIM
LL2024.863-EN-T2-350-740	[T2] Type II, Asymmetric, Side throw - 133x48°	6760 lm	50 W	4000 K CRI 70	On/Off, DALI, AutoDIM, StepDIM
LL2024.863-EN-T2-350-830	[T2] Type II, Asymmetric, Side throw - 133x48°	5930 lm	50 W	3000 K CRI 80	On/Off, DALI, AutoDIM, StepDIM
LL2024.863-EN-T2-500-730	[T2] Type II, Asymmetric, Side throw - 133x48°	9640 lm	72 W	3000 K CRI 70	On/Off, DALI, AutoDIM, StepDIM
LL2024.863-EN-T2-500-740	[T2] Type II, Asymmetric, Side throw - 133x48°	10675 lm	72 W	4000 K CRI 70	On/Off, DALI, AutoDIM, StepDIM
LL2024.863-EN-T2-500-830	[T2] Type II, Asymmetric, Side throw - 133x48°	9510 lm	72 W	3000 K CRI 80	On/Off, DALI, AutoDIM, StepDIM
LL2024.863-EN-T2-700-730	[T2] Type II, Asymmetric, Side throw - 133x48°	12440 lm	100 W	3000 K CRI 70	On/Off, DALI, AutoDIM, StepDIM
LL2024.863-EN-T2-700-740	[T2] Type II, Asymmetric, Side throw - 133x48°	13800 lm	100 W	4000 K CRI 70	On/Off, DALI, AutoDIM, StepDIM
LL2024.863-EN-T2-700-830	[T2] Type II, Asymmetric, Side throw - 133x48°	12323 lm	100 W	3000 K CRI 80	On/Off, DALI, AutoDIM, StepDIM
LL2024.863-EN-T2-2-350-730	[T2] Type II, Asymmetric, Side throw - 149x54°	6450 lm	50 W	3000 K CRI 70	On/Off, DALI, AutoDIM, StepDIM
LL2024.863-EN-T2-2-350-740	[T2] Type II, Asymmetric, Side throw - 149x54°	6870 lm	50 W	4000 K CRI 70	On/Off, DALI, AutoDIM, StepDIM

**HPR Pazarlama A.Ş.**

Başkent OSB 22. Cd. No: 2, Malıköy, Temelli,  
Sincan, 06909 Ankara, Turkey  
+90 312 267 54 30  
info@hepergroup.com

**HEPER Europe GmbH**

Ahornweg 5a, 58675  
Hemer, Germany  
+49 237 2901 2975  
infoEU@hepergroup.com

We reserve the right to change specifications without prior written notice. Edition: 05.04.2024.  
For current version visit [heperlighting.com](http://heperlighting.com). All flux (±%7 tolerance) and power values (±%10 tolerance) are derived following appropriate IES, CIE, and applicable standards.

LL2024.863-EN-T2-2-350-830	[T2] Type II, Asymmetric, Side throw - 149x54°	6030 lm	50 W	3000 K CRI 80	On/Off, DALI, AutoDIM, StepDIM
LL2024.863-EN-T2-2-500-730	[T2] Type II, Asymmetric, Side throw - 149x54°	9405 lm	72 W	3000 K CRI 70	On/Off, DALI, AutoDIM, StepDIM
LL2024.863-EN-T2-2-500-740	[T2] Type II, Asymmetric, Side throw - 149x54°	10150 lm	72 W	4000 K CRI 70	On/Off, DALI, AutoDIM, StepDIM
LL2024.863-EN-T2-2-500-830	[T2] Type II, Asymmetric, Side throw - 149x54°	9040 lm	72 W	3000 K CRI 80	On/Off, DALI, AutoDIM, StepDIM
LL2024.863-EN-T2-2-700-730	[T2] Type II, Asymmetric, Side throw - 149x54°	12135 lm	100 W	3000 K CRI 70	On/Off, DALI, AutoDIM, StepDIM
LL2024.863-EN-T2-2-700-740	[T2] Type II, Asymmetric, Side throw - 149x54°	13120 lm	100 W	4000 K CRI 70	On/Off, DALI, AutoDIM, StepDIM
LL2024.863-EN-T2-2-700-830	[T2] Type II, Asymmetric, Side throw - 149x54°	11715 lm	100 W	3000 K CRI 80	On/Off, DALI, AutoDIM, StepDIM
LL2024.863-EN-T3-350-730	[T3] Type III, Asymmetric, Side throw - 143x63°	6070 lm	50 W	3000 K CRI 70	On/Off, DALI, AutoDIM, StepDIM
LL2024.863-EN-T3-350-740	[T3] Type III, Asymmetric, Side throw - 143x63°	6470 lm	50 W	4000 K CRI 70	On/Off, DALI, AutoDIM, StepDIM
LL2024.863-EN-T3-350-830	[T3] Type III, Asymmetric, Side throw - 143x63°	5675 lm	50 W	3000 K CRI 80	On/Off, DALI, AutoDIM, StepDIM
LL2024.863-EN-T3-500-730	[T3] Type III, Asymmetric, Side throw - 143x63°	8930 lm	72 W	3000 K CRI 70	On/Off, DALI, AutoDIM, StepDIM
LL2024.863-EN-T3-500-740	[T3] Type III, Asymmetric, Side throw - 143x63°	9550 lm	72 W	4000 K CRI 70	On/Off, DALI, AutoDIM, StepDIM
LL2024.863-EN-T3-500-830	[T3] Type III, Asymmetric, Side throw - 143x63°	8505 lm	72 W	3000 K CRI 80	On/Off, DALI, AutoDIM, StepDIM
LL2024.863-EN-T3-700-730	[T3] Type III, Asymmetric, Side throw - 143x63°	11520 lm	100 W	3000 K CRI 70	On/Off, DALI, AutoDIM, StepDIM
LL2024.863-EN-T3-700-740	[T3] Type III, Asymmetric, Side throw - 143x63°	12345 lm	100 W	4000 K CRI 70	On/Off, DALI, AutoDIM, StepDIM
LL2024.863-EN-T3-700-830	[T3] Type III, Asymmetric, Side throw - 143x63°	11020 lm	100 W	3000 K CRI 80	On/Off, DALI, AutoDIM, StepDIM
LL2024.863-EN-T4-350-730	[T4] Type IV, Asymmetric, Forward throw - 117x64°	6365 lm	50 W	3000 K CRI 70	On/Off, DALI, AutoDIM, StepDIM
LL2024.863-EN-T4-350-740	[T4] Type IV, Asymmetric, Forward throw - 117x64°	6775 lm	50 W	4000 K CRI 70	On/Off, DALI, AutoDIM, StepDIM
LL2024.863-EN-T4-350-830	[T4] Type IV, Asymmetric, Forward throw - 117x64°	5945 lm	50 W	3000 K CRI 80	On/Off, DALI, AutoDIM, StepDIM
LL2024.863-EN-T4-500-730	[T4] Type IV, Asymmetric, Forward throw - 117x64°	9285 lm	72 W	3000 K CRI 70	On/Off, DALI, AutoDIM, StepDIM
LL2024.863-EN-T4-500-740	[T4] Type IV, Asymmetric, Forward throw - 117x64°	10005 lm	72 W	4000 K CRI 70	On/Off, DALI, AutoDIM, StepDIM

**HPR Pazarlama A.Ş.**

Başkent OSB 22. Cd. No: 2, Malıköy, Temelli,  
Sincan, 06909 Ankara, Turkey  
+90 312 267 54 30  
info@hepergroup.com

**HEPER Europe GmbH**

Ahornweg 5a, 58675  
Hemer, Germany  
+49 237 2901 2975  
infoEU@hepergroup.com

We reserve the right to change specifications without prior written notice. Edition: 05.04.2024.  
For current version visit [heperlighting.com](http://heperlighting.com). All flux (±%7 tolerance) and power values (±%10 tolerance) are derived following appropriate IES, CIE, and applicable standards.

LL2024.863-EN-T4-500-830	[T4] Type IV, Asymmetric, Forward throw - 117x64°	8910 lm	72 W	3000 K CRI 80	On/Off, DALI, AutoDIM, StepDIM
LL2024.863-EN-T4-700-730	[T4] Type IV, Asymmetric, Forward throw - 117x64°	11980 lm	100 W	3000 K CRI 70	On/Off, DALI, AutoDIM, StepDIM
LL2024.863-EN-T4-700-740	[T4] Type IV, Asymmetric, Forward throw - 117x64°	12935 lm	100 W	4000 K CRI 70	On/Off, DALI, AutoDIM, StepDIM
LL2024.863-EN-T4-700-830	[T4] Type IV, Asymmetric, Forward throw - 117x64°	11550 lm	100 W	3000 K CRI 80	On/Off, DALI, AutoDIM, StepDIM
LL2024.863-EN-T5-350-730	[T5] Type V, Symmetric - 117°	6605 lm	50 W	3000 K CRI 70	On/Off, DALI, AutoDIM, StepDIM
LL2024.863-EN-T5-350-740	[T5] Type V, Symmetric - 117°	7035 lm	50 W	4000 K CRI 70	On/Off, DALI, AutoDIM, StepDIM
LL2024.863-EN-T5-350-830	[T5] Type V, Symmetric - 117°	6170 lm	50 W	3000 K CRI 80	On/Off, DALI, AutoDIM, StepDIM
LL2024.863-EN-T5-500-730	[T5] Type V, Symmetric - 117°	9762 lm	72 W	3000 K CRI 70	On/Off, DALI, AutoDIM, StepDIM
LL2024.863-EN-T5-500-740	[T5] Type V, Symmetric - 117°	10615 lm	72 W	4000 K CRI 70	On/Off, DALI, AutoDIM, StepDIM
LL2024.863-EN-T5-500-830	[T5] Type V, Symmetric - 117°	9380 lm	72 W	3000 K CRI 80	On/Off, DALI, AutoDIM, StepDIM
LL2024.863-EN-T5-700-730	[T5] Type V, Symmetric - 117°	12595 lm	100 W	3000 K CRI 70	On/Off, DALI, AutoDIM, StepDIM
LL2024.863-EN-T5-700-740	[T5] Type V, Symmetric - 117°	13720 lm	100 W	4000 K CRI 70	On/Off, DALI, AutoDIM, StepDIM
LL2024.863-EN-T5-700-830	[T5] Type V, Symmetric - 117°	12250 lm	100 W	3000 K CRI 80	On/Off, DALI, AutoDIM, StepDIM
LL2024.863-EN-P4-350-730	[P4] Special pedestrian road distribution-right side traffic - 20x78°	6605 lm	50 W	3000 K CRI 70	On/Off, DALI, AutoDIM, StepDIM
LL2024.863-EN-P4-350-740	[P4] Special pedestrian road distribution-right side traffic - 20x78°	7035 lm	50 W	4000 K CRI 70	On/Off, DALI, AutoDIM, StepDIM
LL2024.863-EN-P4-350-830	[P4] Special pedestrian road distribution-right side traffic - 20x78°	6170 lm	50 W	3000 K CRI 80	On/Off, DALI, AutoDIM, StepDIM
LL2024.863-EN-P4-500-730	[P4] Special pedestrian road distribution-right side traffic - 20x78°	9645 lm	72 W	3000 K CRI 70	On/Off, DALI, AutoDIM, StepDIM
LL2024.863-EN-P4-500-740	[P4] Special pedestrian road distribution-right side traffic - 20x78°	10530 lm	72 W	4000 K CRI 70	On/Off, DALI, AutoDIM, StepDIM
LL2024.863-EN-P4-500-830	[P4] Special pedestrian road distribution-right side traffic - 20x78°	9380 lm	72 W	3000 K CRI 80	On/Off, DALI, AutoDIM, StepDIM
LL2024.863-EN-P4-700-730	[P4] Special pedestrian road distribution-right side traffic - 20x78°	12440 lm	100 W	3000 K CRI 70	On/Off, DALI, AutoDIM, StepDIM
LL2024.863-EN-P4-700-740	[P4] Special pedestrian road distribution-right side traffic - 20x78°	13610 lm	100 W	4000 K CRI 70	On/Off, DALI, AutoDIM, StepDIM

**HPR Pazarlama A.Ş.**

Başkent OSB 22. Cd. No: 2, Malıköy, Temelli,  
Sincan, 06909 Ankara, Turkey  
+90 312 267 54 30  
info@hepergroup.com

**HEPER Europe GmbH**

Ahornweg 5a, 58675  
Hemer, Germany  
+49 237 2901 2975  
infoEU@hepergroup.com

We reserve the right to change specifications without prior written notice. Edition: 05.04.2024.  
For current version visit [heperlighting.com](http://heperlighting.com). All flux (±%7 tolerance) and power values (±%10 tolerance) are derived following appropriate IES, CIE, and applicable standards.

LL2024.863-EN-P4-700-830	[P4] Special pedestrian road distribution-right side traffic - 20x78°	12155 lm	100 W	3000 K CRI 80	On/Off, DALI, AutoDIM, StepDIM
--------------------------	---	----------	-------	---------------	--------------------------------