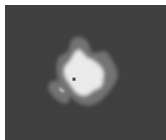
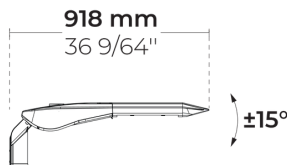


D-LIGHT V2 AFX 2 Module

LL2024.862-EN



IK08 IP66



[P4]

Special pedestrian road distribution - right side traffic - 20x78°



[T1]

Type I, Asymmetric, Side throw - 111x48°



[T2]

Type II, Asymmetric, Side throw - 133x48°



[T2-2]

Type II, Asymmetric, Side throw - 149x54°



[T3]

Type III, Asymmetric, Side throw - 143x63°



[T4]

Type IV, Asymmetric, Forward throw - 117x64°



[T5]

Type V, Symmetric - 117°

Variants

Light distribution	[P4] 20x78°, [T1] 111x48°, [T2] 133x48°, [T2-2] 149x54°, [T3] 143x63°, [T4] 117x64°, [T5] 117°
Delivered lumens flux	3785 - 9085 lm
Rated input power	34 - 67 W
Colour temperature	3000 K CRI 70, 3000 K CRI 80, 4000 K CRI 70
BUG rating	B1-U0-G1, B2-U0-G1, B2-U1-G1, B3-U0-G1, B1-U0-G0, B1-U1-G1, B2-U0-G0, B3-U0-G0
Lifetime L90B50 (hour)	>102, 000
Lifetime L80B50 (hour)	>102, 000

Options

Control	On/Off, DALI, AutoDIM, StepDIM
Product colours	  

Extras


Light output	Constant light output
Consult the factory	Class II, 120-277V 50/60Hz

Technical information


Mounting	Direct pole or side bracket mountable. Spigot: Ø60 mm x 100 mm
Tilt angle	+15°/-15°
Housing	Corrosion resistant, die-cast, marine grade aluminum housing
Finishing	Chromate conversion pretreatment followed by electrostatic powder coating
Fasteners	Stainless steel (AISI 304 / EN 1.4301 grade)
Gasket	EPDM gasket (Shore A 20-25)
Lens / Reflector	PMMA lens with high optical efficiency
Glass / Diffusor	Tempered safety glass
Impact protection	IK08
Ingress protection	IP66
Input voltage	220-240V 50/60Hz
Insulation class	Class I
Weight	7.3 kg
LED module	High power LEDs on metal-core PCB
Driver	Internal LED driver
Driver surge protection	10/6 kV
Power factor	< 0.95
Through wiring	Single cable entry
Operating temperature	-40...50°C
Cable	0.2 m of flexible cable

Poles (To be ordered separately)


Conical aluminum poles with flange plate

	Product code	Height	Diameter / Dimensions	Spigot diameter
	PAFK.D114	3m, 4m, 5m m	Ø114mm	Ø60mm, Ø76mm mm
	PAFK.D122	4m, 5m, 6m m	Ø122mm	Ø60mm, Ø76mm mm
	PAFK.D148	6m, 7m, 8m m	Ø148mm	Ø60mm, Ø76mm mm
	PAFK.D165	6m, 7m, 8m, 9m m	Ø165mm	Ø76mm, Ø90mm mm
	PAFK.D180	10m, 8m, 9m m	Ø180mm	Ø76mm, Ø90mm mm
	PAFK.D200	10m, 11m, 12m m	Ø200mm	Ø76mm, Ø90mm mm

Conical aluminum poles with embedded base




	Product code	Height	Diameter / Dimensions	Spigot diameter
	PABK.D114	3m, 4m, 5m m	Ø114mm	Ø60mm, Ø76mm mm
	PABK.D122	4m, 5m, 6m, 7m m	Ø122mm	Ø60mm, Ø76mm mm
	PABK.D148	6m, 7m, 8m m	Ø148mm	Ø60mm, Ø76mm mm
	PABK.D165	6m, 7m, 8m, 9m m	Ø165mm	Ø76mm, Ø90mm mm
	PABK.D180	10m, 8m, 9m m	Ø180mm	Ø76mm, Ø90mm mm
	PABK.D200	10m, 11m, 12m m	Ø200mm	Ø76mm, Ø90mm mm

Cylindrical aluminum poles with flange plate

	Product code	Height	Diameter / Dimensions	Spigot diameter
	PAFC.D114	3m, 4m, 5m m	Ø114mm	Ø114mm mm
	PAFC.D122	3m, 4m, 5m, 6m m	Ø122mm	Ø122mm mm
	PAFC.D148	6m, 7m, 8m m	Ø148mm	Ø148mm mm
	PAFC.D165	6m, 7m, 8m, 9m m	Ø165mm	Ø165mm mm

Project name		Type		Quantity	
Date		Note			

LL2024.862-EN-____-____-____-____**-EN-C1-**____-____-____

Light distribution	Rated input power	Colour temperature	Control	Product colours
<p>[P4] Special pedestrian road distribution-right side traffic - 20x78°</p> <p>[T1] Type I, Asymmetric, Side throw - 111x48°</p> <p>[T2] Type II, Asymmetric, Side throw - 133x48°</p> <p>[T2-2] Type II, Asymmetric, Side throw - 149x54°</p> <p>[T3] Type III, Asymmetric, Side throw - 143x63°</p> <p>[T4] Type IV, Asymmetric, Forward throw - 117x64°</p> <p>[T5] Type V, Symmetric - 117°</p>	<p>[350] 34 W</p> <p>[500] 48 W</p> <p>[700] 67 W</p>	<p>[730] 3000 K CRI 70</p> <p>[830] 3000 K CRI 80</p> <p>[740] 4000 K CRI 70</p>	<p>[ONOFF] On/Off</p> <p>[DALI] DALI</p> <p>[AUTO] AutoDIM</p> <p>[STEP] StepDIM</p>	<p>[HM3]  Anthracite grey</p> <p>[HM4]  Light grey</p> <p>[CC]  Custom colour (Please specify RAL code)</p>
Extras				
Light output				
[CLO] Constant light output				
Consult the factory				
[C2] Class II				
[UNI] 120-277V 50/60Hz				

Variant code	Light distribution	Delivered lumens flux	Rated input power	Colour temperature	Control
LL2024.862-EN-T1-350-730	[T1] Type I, Asymmetric, Side throw - 111x48°	4530 lm	34 W	3000 K CRI 70	On/Off, DALI, AutoDIM, StepDIM
LL2024.862-EN-T1-350-740	[T1] Type I, Asymmetric, Side throw - 111x48°	4830 lm	34 W	4000 K CRI 70	On/Off, DALI, AutoDIM, StepDIM
LL2024.862-EN-T1-350-830	[T1] Type I, Asymmetric, Side throw - 111x48°	4235 lm	34 W	3000 K CRI 80	On/Off, DALI, AutoDIM, StepDIM
LL2024.862-EN-T1-500-730	[T1] Type I, Asymmetric, Side throw - 111x48°	6415 lm	48 W	3000 K CRI 70	On/Off, DALI, AutoDIM, StepDIM
LL2024.862-EN-T1-500-740	[T1] Type I, Asymmetric, Side throw - 111x48°	6785 lm	48 W	4000 K CRI 70	On/Off, DALI, AutoDIM, StepDIM
LL2024.862-EN-T1-500-830	[T1] Type I, Asymmetric, Side throw - 111x48°	5790 lm	48 W	3000 K CRI 80	On/Off, DALI, AutoDIM, StepDIM
LL2024.862-EN-T1-700-730	[T1] Type I, Asymmetric, Side throw - 111x48°	8270 lm	67 W	3000 K CRI 70	On/Off, DALI, AutoDIM, StepDIM
LL2024.862-EN-T1-700-740	[T1] Type I, Asymmetric, Side throw - 111x48°	8925 lm	67 W	4000 K CRI 70	On/Off, DALI, AutoDIM, StepDIM
LL2024.862-EN-T1-700-830	[T1] Type I, Asymmetric, Side throw - 111x48°	7500 lm	67 W	3000 K CRI 80	On/Off, DALI, AutoDIM, StepDIM
LL2024.862-EN-T2-350-730	[T2] Type II, Asymmetric, Side throw - 133x48°	4230 lm	34 W	3000 K CRI 70	On/Off, DALI, AutoDIM, StepDIM
LL2024.862-EN-T2-350-740	[T2] Type II, Asymmetric, Side throw - 133x48°	4510 lm	34 W	4000 K CRI 70	On/Off, DALI, AutoDIM, StepDIM
LL2024.862-EN-T2-350-830	[T2] Type II, Asymmetric, Side throw - 133x48°	3955 lm	34 W	3000 K CRI 80	On/Off, DALI, AutoDIM, StepDIM
LL2024.862-EN-T2-500-730	[T2] Type II, Asymmetric, Side throw - 133x48°	6270 lm	48 W	3000 K CRI 70	On/Off, DALI, AutoDIM, StepDIM
LL2024.862-EN-T2-500-740	[T2] Type II, Asymmetric, Side throw - 133x48°	6880 lm	48 W	4000 K CRI 70	On/Off, DALI, AutoDIM, StepDIM
LL2024.862-EN-T2-500-830	[T2] Type II, Asymmetric, Side throw - 133x48°	5870 lm	48 W	3000 K CRI 80	On/Off, DALI, AutoDIM, StepDIM
LL2024.862-EN-T2-700-730	[T2] Type II, Asymmetric, Side throw - 133x48°	8385 lm	67 W	3000 K CRI 70	On/Off, DALI, AutoDIM, StepDIM
LL2024.862-EN-T2-700-740	[T2] Type II, Asymmetric, Side throw - 133x48°	9085 lm	67 W	4000 K CRI 70	On/Off, DALI, AutoDIM, StepDIM
LL2024.862-EN-T2-700-830	[T2] Type II, Asymmetric, Side throw - 133x48°	6980 lm	67 W	3000 K CRI 80	On/Off, DALI, AutoDIM, StepDIM
LL2024.862-EN-T2-2-350-730	[T2] Type II, Asymmetric, Side throw - 149x54°	4300 lm	34 W	3000 K CRI 70	On/Off, DALI, AutoDIM, StepDIM
LL2024.862-EN-T2-2-350-740	[T2] Type II, Asymmetric, Side throw - 149x54°	4585 lm	34 W	4000 K CRI 70	On/Off, DALI, AutoDIM, StepDIM

HPR Pazarlama A.Ş.

Başkent OSB 22. Cd. No: 2, Malıköy, Temelli,
Sincan, 06909 Ankara, Turkey
+90 312 267 54 30
info@hepergroup.com

HEPER Europe GmbH

Ahornweg 5a, 58675
Hemer, Germany
+49 237 2901 2975
infoEU@hepergroup.com

We reserve the right to change specifications without prior written notice. Edition: 22.03.2024.
For current version visit heperlighting.com. All flux (±%7 tolerance) and power values (±%10 tolerance) are derived following appropriate IES, CIE, and applicable standards.

LL2024.862-EN-T2-2-350-830	[T2] Type II, Asymmetric, Side throw - 149x54°	4020 lm	34 W	3000 K CRI 80	On/Off, DALI, AutoDIM, StepDIM
LL2024.862-EN-T2-2-500-730	[T2] Type II, Asymmetric, Side throw - 149x54°	6500 lm	48 W	3000 K CRI 70	On/Off, DALI, AutoDIM, StepDIM
LL2024.862-EN-T2-2-500-740	[T2] Type II, Asymmetric, Side throw - 149x54°	6635 lm	48 W	4000 K CRI 70	On/Off, DALI, AutoDIM, StepDIM
LL2024.862-EN-T2-2-500-830	[T2] Type II, Asymmetric, Side throw - 149x54°	5665 lm	48 W	3000 K CRI 80	On/Off, DALI, AutoDIM, StepDIM
LL2024.862-EN-T2-2-700-730	[T2] Type II, Asymmetric, Side throw - 149x54°	8090 lm	67 W	3000 K CRI 70	On/Off, DALI, AutoDIM, StepDIM
LL2024.862-EN-T2-2-700-740	[T2] Type II, Asymmetric, Side throw - 149x54°	8675 lm	67 W	4000 K CRI 70	On/Off, DALI, AutoDIM, StepDIM
LL2024.862-EN-T2-2-700-830	[T2] Type II, Asymmetric, Side throw - 149x54°	7600 lm	67 W	3000 K CRI 80	On/Off, DALI, AutoDIM, StepDIM
LL2024.862-EN-T3-350-730	[T3] Type III, Asymmetric, Side throw - 143x63°	4045 lm	34 W	3000 K CRI 70	On/Off, DALI, AutoDIM, StepDIM
LL2024.862-EN-T3-350-740	[T3] Type III, Asymmetric, Side throw - 143x63°	4315 lm	34 W	4000 K CRI 70	On/Off, DALI, AutoDIM, StepDIM
LL2024.862-EN-T3-350-830	[T3] Type III, Asymmetric, Side throw - 143x63°	3785 lm	34 W	3000 K CRI 80	On/Off, DALI, AutoDIM, StepDIM
LL2024.862-EN-T3-500-730	[T3] Type III, Asymmetric, Side throw - 143x63°	5970 lm	48 W	3000 K CRI 70	On/Off, DALI, AutoDIM, StepDIM
LL2024.862-EN-T3-500-740	[T3] Type III, Asymmetric, Side throw - 143x63°	6315 lm	48 W	4000 K CRI 70	On/Off, DALI, AutoDIM, StepDIM
LL2024.862-EN-T3-500-830	[T3] Type III, Asymmetric, Side throw - 143x63°	5390 lm	48 W	3000 K CRI 80	On/Off, DALI, AutoDIM, StepDIM
LL2024.862-EN-T3-700-730	[T3] Type III, Asymmetric, Side throw - 143x63°	7700 lm	67 W	3000 K CRI 70	On/Off, DALI, AutoDIM, StepDIM
LL2024.862-EN-T3-700-740	[T3] Type III, Asymmetric, Side throw - 143x63°	8240 lm	67 W	4000 K CRI 70	On/Off, DALI, AutoDIM, StepDIM
LL2024.862-EN-T3-700-830	[T3] Type III, Asymmetric, Side throw - 143x63°	6980 lm	67 W	3000 K CRI 80	On/Off, DALI, AutoDIM, StepDIM
LL2024.862-EN-T4-350-730	[T4] Type IV, Asymmetric, Forward throw - 117x64°	4240 lm	34 W	3000 K CRI 70	On/Off, DALI, AutoDIM, StepDIM
LL2024.862-EN-T4-350-740	[T4] Type IV, Asymmetric, Forward throw - 117x64°	4520 lm	34 W	4000 K CRI 70	On/Off, DALI, AutoDIM, StepDIM
LL2024.862-EN-T4-350-830	[T4] Type IV, Asymmetric, Forward throw - 117x64°	3965 lm	34 W	3000 K CRI 80	On/Off, DALI, AutoDIM, StepDIM
LL2024.862-EN-T4-500-730	[T4] Type IV, Asymmetric, Forward throw - 117x64°	6210 lm	48 W	3000 K CRI 70	On/Off, DALI, AutoDIM, StepDIM
LL2024.862-EN-T4-500-740	[T4] Type IV, Asymmetric, Forward throw - 117x64°	6565 lm	48 W	4000 K CRI 70	On/Off, DALI, AutoDIM, StepDIM

HPR Pazarlama A.Ş.

Başkent OSB 22. Cd. No: 2, Malıköy, Temelli,
Sincan, 06909 Ankara, Turkey
+90 312 267 54 30
info@hepergroup.com

HEPER Europe GmbH

Ahornweg 5a, 58675
Hemer, Germany
+49 237 2901 2975
infoEU@hepergroup.com

We reserve the right to change specifications without prior written notice. Edition: 22.03.2024.
For current version visit heperlighting.com. All flux (±%7 tolerance) and power values (±%10 tolerance) are derived following appropriate IES, CIE, and applicable standards.

LL2024.862-EN-T4-500-830	[T4] Type IV, Asymmetric, Forward throw - 117x64°	5605 lm	48 W	3000 K CRI 80	On/Off, DALI, AutoDIM, StepDIM
LL2024.862-EN-T4-700-730	[T4] Type IV, Asymmetric, Forward throw - 117x64°	8005 lm	67 W	3000 K CRI 70	On/Off, DALI, AutoDIM, StepDIM
LL2024.862-EN-T4-700-740	[T4] Type IV, Asymmetric, Forward throw - 117x64°	8705 lm	67 W	4000 K CRI 70	On/Off, DALI, AutoDIM, StepDIM
LL2024.862-EN-T4-700-830	[T4] Type IV, Asymmetric, Forward throw - 117x64°	7255 lm	67 W	3000 K CRI 80	On/Off, DALI, AutoDIM, StepDIM
LL2024.862-EN-T5-350-730	[T5] Type V, Symmetric - 117°	4400 lm	34 W	3000 K CRI 70	On/Off, DALI, AutoDIM, StepDIM
LL2024.862-EN-T5-350-740	[T5] Type V, Symmetric - 117°	4690 lm	34 W	4000 K CRI 70	On/Off, DALI, AutoDIM, StepDIM
LL2024.862-EN-T5-350-830	[T5] Type V, Symmetric - 117°	4115 lm	34 W	3000 K CRI 80	On/Off, DALI, AutoDIM, StepDIM
LL2024.862-EN-T5-500-730	[T5] Type V, Symmetric - 117°	6540 lm	48 W	3000 K CRI 70	On/Off, DALI, AutoDIM, StepDIM
LL2024.862-EN-T5-500-740	[T5] Type V, Symmetric - 117°	6920 lm	48 W	4000 K CRI 70	On/Off, DALI, AutoDIM, StepDIM
LL2024.862-EN-T5-500-830	[T5] Type V, Symmetric - 117°	5910 lm	48 W	3000 K CRI 80	On/Off, DALI, AutoDIM, StepDIM
LL2024.862-EN-T5-700-730	[T5] Type V, Symmetric - 117°	8435 lm	67 W	3000 K CRI 70	On/Off, DALI, AutoDIM, StepDIM
LL2024.862-EN-T5-700-740	[T5] Type V, Symmetric - 117°	8940 lm	67 W	4000 K CRI 70	On/Off, DALI, AutoDIM, StepDIM
LL2024.862-EN-T5-700-830	[T5] Type V, Symmetric - 117°	7645 lm	67 W	3000 K CRI 80	On/Off, DALI, AutoDIM, StepDIM
LL2024.862-EN-P4-350-730	[P4] Special pedestrian road distribution-right side traffic - 20x78°	4400 lm	34 W	3000 K CRI 70	On/Off, DALI, AutoDIM, StepDIM
LL2024.862-EN-P4-350-740	[P4] Special pedestrian road distribution-right side traffic - 20x78°	4690 lm	34 W	4000 K CRI 70	On/Off, DALI, AutoDIM, StepDIM
LL2024.862-EN-P4-350-830	[P4] Special pedestrian road distribution-right side traffic - 20x78°	4115 lm	34 W	3000 K CRI 80	On/Off, DALI, AutoDIM, StepDIM
LL2024.862-EN-P4-500-730	[P4] Special pedestrian road distribution-right side traffic - 20x78°	6455 lm	48 W	3000 K CRI 70	On/Off, DALI, AutoDIM, StepDIM
LL2024.862-EN-P4-500-740	[P4] Special pedestrian road distribution-right side traffic - 20x78°	6830 lm	48 W	4000 K CRI 70	On/Off, DALI, AutoDIM, StepDIM
LL2024.862-EN-P4-500-830	[P4] Special pedestrian road distribution-right side traffic - 20x78°	5830 lm	48 W	3000 K CRI 80	On/Off, DALI, AutoDIM, StepDIM
LL2024.862-EN-P4-700-730	[P4] Special pedestrian road distribution-right side traffic - 20x78°	8325 lm	67 W	3000 K CRI 70	On/Off, DALI, AutoDIM, StepDIM
LL2024.862-EN-P4-700-740	[P4] Special pedestrian road distribution-right side traffic - 20x78°	9025 lm	67 W	4000 K CRI 70	On/Off, DALI, AutoDIM, StepDIM

HPR Pazarlama A.Ş.

Başkent OSB 22. Cd. No: 2, Malıköy, Temelli,
Sincan, 06909 Ankara, Turkey
+90 312 267 54 30
info@hepergroup.com

HEPER Europe GmbH

Ahornweg 5a, 58675
Hemer, Germany
+49 237 2901 2975
infoEU@hepergroup.com

We reserve the right to change specifications without prior written notice. Edition: 22.03.2024.
For current version visit heperlighting.com. All flux (±%7 tolerance) and power values (±%10 tolerance) are derived following appropriate IES, CIE, and applicable standards.

LL2024.862-EN-P4-700-830	[P4] Special pedestrian road distribution-right side traffic - 20x78°	7545 lm	67 W	3000 K CRI 80	On/Off, DALI, AutoDIM, StepDIM
--------------------------	---	---------	------	---------------	--------------------------------