

VESTA S 4 LED

LB6042.500-US



Configurations

Light distribution	[SLFB] 85x90°
Delivered lumens flux	370 - 400 lm
Rated input power	6 W
Color temperature	3000 K CRI 80, 4000 K CRI 70
Lifetime L90 (hour)	>145, 000
Lifetime L80 (hour)	>145, 000

Options

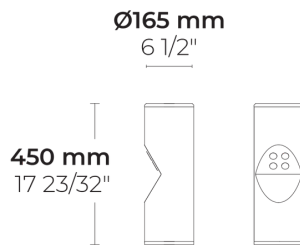
Control	On/Off
Product colors	

Extras

Luminaire body options	Double powder coating
-------------------------------	-----------------------

Technical information

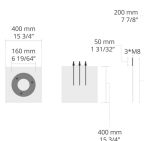
Housing	Corrosion resistant, extruded, marine grade aluminum housing
Finishing	Chromate conversion pretreatment followed by electrostatic powder coating
Fasteners	Stainless steel (AISI 304 / EN 1.4301 grade)
Lens / Reflector	PMMA lens with high optical efficiency
Glass / Diffusor	Tempered safety glass
Impact protection	IK05
Ingress protection	IP65
Input voltage	120-277V 50/60Hz
Insulation class	Class I
Weight	8.7 lbs
LED module	High power LEDs on metal-core PCB
Driver	Internal LED driver
Driver surge protection	3/3 kV
Power factor	> 0.40
Through wiring	Single power cord entry
Operating temperature	-40...50°C
Power cord	20" of outdoor use rated flexible power cord



[SLFB]
Special linear,
Forward throw -
85x90°

Accessories (To be ordered separately)

Anchor bolts










629J014

629J014

Project name		Type		Quantity	
Date		Note			

LB6042.500-US-____-____-____-____-____-____

Light distribution	Rated input power	Color temperature	Control	Product colors
[SLFB] Special linear, Forward throw - 85x90°	[350] 6 W	[830] 3000 K CRI 80 [740] 4000 K CRI 70	[ONOFF] On/Off	[HM1]  Black [HM2]  Dark gray [HM3]  Anthracite gray [HM4]  Light gray [HM5]  White [HM6]  Bronze [CC]  Custom color (Please specify RAL code)
Extras	Accessories (<i>To be ordered separately</i>)			
Luminaire body options	Anchor bolts			
[DPC] Double powder coating	[629]014 629J014			

Configuration code	Light distribution	Delivered lumens flux	Rated input power	Color temperature	Control
LB6042.500-US-SLFB-350-740	[SLFB] Special linear, Forward throw - 85x90°	400 lm	6 W	4000 K CRI 70	On/Off
LB6042.500-US-SLFB-350-830	[SLFB] Special linear, Forward throw - 85x90°	370 lm	6 W	3000 K CRI 80	On/Off