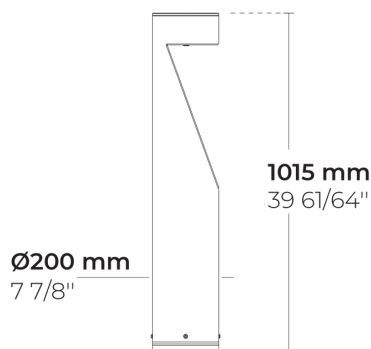


# TRIAN AFX Midi

LB6020.871-US



**[ASYM-FW]**  
Asymmetric Forward  
- 60°




**[ASYM-SD]**  
Asymmetric Side -  
118° x45°

## Configurations

<b>Light distribution</b>	[ASYM-FW] 60°, [ASYM-SD] 118* x45*
<b>Delivered lumens flux</b>	614 - 2056 lm
<b>Rated input power</b>	8 - 17 W
<b>Color temperature</b>	2200 K CRI 80, 2700 K CRI 80, 3000 K CRI 80, 4000 K CRI 70
<b>BUG rating</b>	B0-U1-G0, B0-U2-G1
<b>Lifetime L90 (hour)</b>	>102, 000
<b>Lifetime L80 (hour)</b>	>102, 000

## Options

<b>Control</b>	On/Off, DALI
<b>Product colors</b>	
<b>Height</b>	1.15m

## Extras

<b>Light output</b>	Constant light output
<b>Consult the factory</b>	Class II
<b>Luminaire body options</b>	Double powder coating

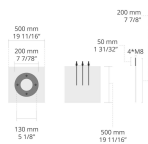
## Technical information

<b>Mounting</b>	Surface mountable
<b>Housing</b>	Corrosion resistant, extruded, marine grade aluminum housing
<b>Finishing</b>	Chromate conversion pretreatment followed by electrostatic powder coating
<b>Fasteners</b>	Stainless steel (AISI 304 / EN 1.4301 grade)
<b>Gasket</b>	Liquid silicone
<b>Lens / Reflector</b>	PMMA lens with high optical efficiency
<b>Glass / Diffusor</b>	Tempered safety glass
<b>Impact protection</b>	IK08
<b>Ingress protection</b>	IP66
<b>Input voltage</b>	110-120V 50/60Hz
<b>Insulation class</b>	Class I
<b>Weight</b>	8.7 kg
<b>LED module</b>	High power LEDs on metal-core PCB
<b>Driver</b>	Internal LED driver
<b>Driver surge protection</b>	2/2 kV
<b>Power factor</b>	> 0.90
<b>Through wiring</b>	Single power cord entry
<b>Operating temperature</b>	-40...50°C
<b>Power cord</b>	8" of flexible power cord

## Accessories (To be ordered separately)

---

### Anchor bolts










**623J014**

623J014

Project name		Type		Quantity	
Date		Note			

**LB6020.871-US-** \_ \_ \_ \_ \_

Light distribution	Rated input power	Color temperature	Control	Product colors
<b>[ASYM-FW]</b> Asymmetric Forward - 60°  <b>[ASYM-SD]</b> Asymmetric Side - 118* x45*	<b>[350]</b> 8 W  <b>[500]</b> 12 W  <b>[700]</b> 17 W	<b>[822]</b> 2200 K CRI 80  <b>[827]</b> 2700 K CRI 80  <b>[830]</b> 3000 K CRI 80  <b>[740]</b> 4000 K CRI 70	<b>[ONOFF]</b> On/Off  <b>[DALI]</b> DALI	<b>[HM1]</b>  Black  <b>[HM2]</b>  Dark gray  <b>[HM3]</b>  Anthracite gray  <b>[HM4]</b>  Light gray  <b>[HM5]</b>  White  <b>[HM6]</b>  Bronze  <b>[CC]</b>  Custom color (Please specify RAL code)

Height	Extras	Accessories ( <i>To be ordered separately</i> )
<b>[H1.15]</b> 1.15m	<b>Light output</b>	<b>Anchor bolts</b>
	<b>[CLO]</b> Constant light output	<b>[623]014</b> 623J014
	<b>Consult the factory</b>	
	<b>[C2]</b> Class II	
	<b>Luminaire body options</b>	
<b>[DPC]</b> Double powder coating		

Configuration code	Light distribution	Delivered lumens flux	Rated input power	Color temperature	Control
LB6020.871-US-ASYM-SD-350-740	[ASYM-SD] Asymmetric Side - 118* x45*	746 lm	8 W	4000 K CRI 70	On/Off, DALI
LB6020.871-US-ASYM-SD-350-822	[ASYM-SD] Asymmetric Side - 118* x45*	614 lm	8 W	2200 K CRI 80	On/Off, DALI
LB6020.871-US-ASYM-SD-350-827	[ASYM-SD] Asymmetric Side - 118* x45*	658 lm	8 W	2700 K CRI 80	On/Off, DALI
LB6020.871-US-ASYM-SD-350-830	[ASYM-SD] Asymmetric Side - 118* x45*	658 lm	8 W	3000 K CRI 80	On/Off, DALI
LB6020.871-US-ASYM-SD-500-740	[ASYM-SD] Asymmetric Side - 118* x45*	1010 lm	12 W	4000 K CRI 70	On/Off, DALI
LB6020.871-US-ASYM-SD-500-822	[ASYM-SD] Asymmetric Side - 118* x45*	831 lm	12 W	2200 K CRI 80	On/Off, DALI
LB6020.871-US-ASYM-SD-500-827	[ASYM-SD] Asymmetric Side - 118* x45*	891 lm	12 W	2700 K CRI 80	On/Off, DALI
LB6020.871-US-ASYM-SD-500-830	[ASYM-SD] Asymmetric Side - 118* x45*	891 lm	12 W	3000 K CRI 80	On/Off, DALI
LB6020.871-US-ASYM-SD-700-740	[ASYM-SD] Asymmetric Side - 118* x45*	1302 lm	17 W	4000 K CRI 70	On/Off, DALI
LB6020.871-US-ASYM-SD-700-822	[ASYM-SD] Asymmetric Side - 118* x45*	1072 lm	17 W	2200 K CRI 80	On/Off, DALI
LB6020.871-US-ASYM-SD-700-827	[ASYM-SD] Asymmetric Side - 118* x45*	1149 lm	17 W	2700 K CRI 80	On/Off, DALI
LB6020.871-US-ASYM-SD-700-830	[ASYM-SD] Asymmetric Side - 118* x45*	1149 lm	17 W	3000 K CRI 80	On/Off, DALI
LB6020.871-US-ASYM-FW-350-740	[ASYM-FW] Asymmetric Forward - 60°	1178 lm	8 W	4000 K CRI 70	On/Off, DALI
LB6020.871-US-ASYM-FW-350-822	[ASYM-FW] Asymmetric Forward - 60°	970 lm	8 W	2200 K CRI 80	On/Off, DALI
LB6020.871-US-ASYM-FW-350-827	[ASYM-FW] Asymmetric Forward - 60°	1039 lm	8 W	2700 K CRI 80	On/Off, DALI
LB6020.871-US-ASYM-FW-350-830	[ASYM-FW] Asymmetric Forward - 60°	1039 lm	8 W	3000 K CRI 80	On/Off, DALI
LB6020.871-US-ASYM-FW-500-740	[ASYM-FW] Asymmetric Forward - 60°	1582 lm	12 W	4000 K CRI 70	On/Off, DALI
LB6020.871-US-ASYM-FW-500-822	[ASYM-FW] Asymmetric Forward - 60°	1303 lm	12 W	2200 K CRI 80	On/Off, DALI
LB6020.871-US-ASYM-FW-500-827	[ASYM-FW] Asymmetric Forward - 60°	1396 lm	12 W	2700 K CRI 80	On/Off, DALI
LB6020.871-US-ASYM-FW-500-830	[ASYM-FW] Asymmetric Forward - 60°	1396 lm	12 W	3000 K CRI 80	On/Off, DALI
LB6020.871-US-ASYM-FW-700-740	[ASYM-FW] Asymmetric Forward - 60°	2056 lm	17 W	4000 K CRI 70	On/Off, DALI
LB6020.871-US-ASYM-FW-700-822	[ASYM-FW] Asymmetric Forward - 60°	1693 lm	17 W	2200 K CRI 80	On/Off, DALI
LB6020.871-US-ASYM-FW-700-827	[ASYM-FW] Asymmetric Forward - 60°	1814 lm	17 W	2700 K CRI 80	On/Off, DALI
LB6020.871-US-ASYM-FW-700-830	[ASYM-FW] Asymmetric Forward - 60°	1814 lm	17 W	3000 K CRI 80	On/Off, DALI