

SPARK W

Adaptable, Elegant and Versatile Wall-Mounted Family

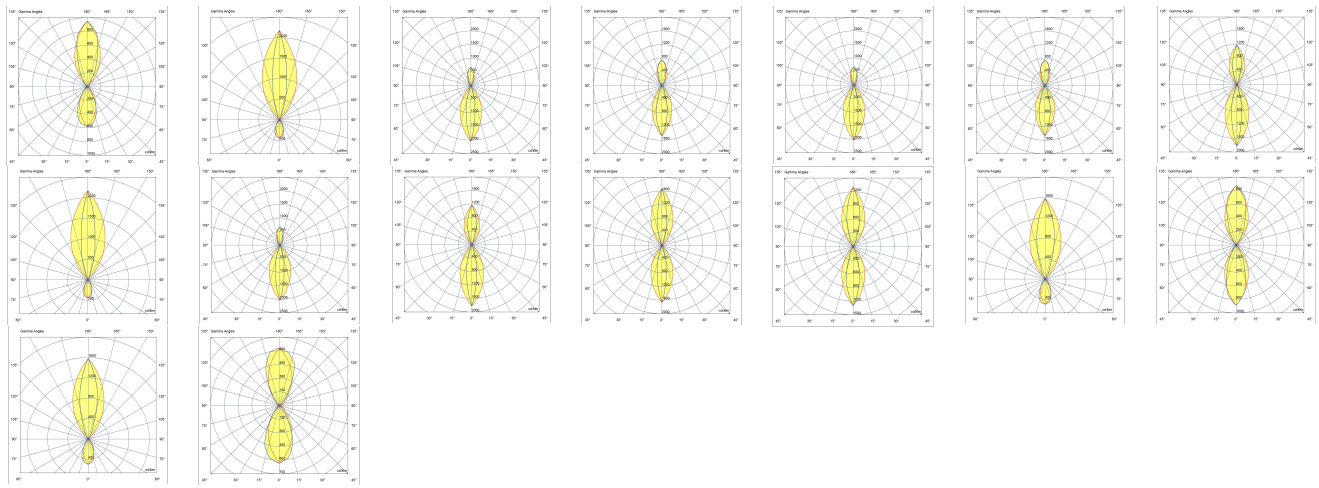
CE UK CA IK07 IP66



SPARK, a versatile product family designed for façade and landscape lighting applications, offers flexibility and adaptability across various fields, enhanced by its extensive range of accessories.

- Equipped with high efficacy COB LED with long time reliability
- 4 different light distribution options from very narrow to wide
- Available in 2700K and 3000K with a color rendering index value of 90
- Anodized aluminum body with knurled surface improves the thermal management
- The double layout allows up-and-down illumination with 4 different light distribution options from very narrow to wide

Product code	Product name	Light distribution	Delivered lumens flux	Rated input power	Colour temperature	Control	Weight
LW8040.529-EN	SPARK W	[M-MN] 60°-36°, [M-VN] 60°-18°, [MN-M] 36°-60°, [MN-N] 36°-24°, [MN-VN] 36°-18°, [N-MN] 24°-36°, [N-VN] 24°-18°, [VN-M] 18°-60°, [VN-MN] 18°-36°, [VN-N] 18°-24°, [VN-VN] 18°, [N-N] 24°, [N-M] 24°-60°, [MN-MN] 36°, [M-N] 60°-24°, [M-M] 60°,	1180 - 1454 lm	22 W	2700 K CRI 90, 3000 K CRI 80, 3000 K CRI 90	On/Off, DALI	0.7 kg



[M-MN]

Medium-Medium
Narrow (Up &
Down)



[M-VN]

Medium-Very
Narrow (Up &
Down)



[MN-M]

Medium Narrow-
Medium (Up &
Down)



[MN-N]

Medium Narrow-
Narrow (Up &
Down)



[MN-VN]

Medium Narrow-
Very Narrow (Up
& Down)



[N-MN]

Narrow-Medium
Narrow (Up &
Down)



[N-VN]

Narrow-Very
Narrow (Up &
Down)



[VN-M]

Very Narrow-
Medium (Up &
Down)



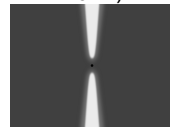
[VN-MN]

Very Narrow-
Medium Narrow
(Up & Down)



[VN-N]

Very Narrow-
Narrow (Up &
Down)



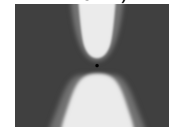
[VN-VN]

Very Narrow (Up
& Down)



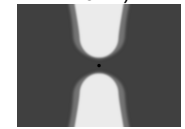
[N-N]

Narrow (Up &
Down)



[N-M]

Narrow
(Up)&Medium
(Down)



[MN-MN]

Medium Narrow
(Up & Down)



[M-N]

Medium
(Up)&Narrow
(Down)



[M-M]

Medium (Up &
Down)

Extras

Light output



BCF

Blue Colour Filter

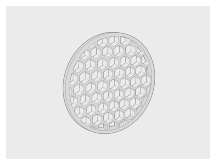
Light output



GCF

Green Colour Filter

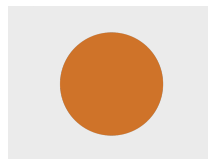
Light output



HNY

Honeycomb

Light output



OCF

Orange Colour Filter

Light output



RCF

Red Colour Filter

Light output



YCF

Yellow Colour Filter

Luminaire body options

DPC

HPR Pazarlama A.Ş.

Başkent OSB 22. Cd. No: 2, Malıköy, Temelli,
Sincan, 06909 Ankara, Turkey
+90 312 267 54 30
info@hepergroup.com

HEPER Europe GmbH

Ahornweg 5a, 58675
Hemer, Germany
+49 237 2901 2975
infoEU@hepergroup.com

We reserve the right to change specifications
without prior written notice. Edition: 18.05.2024.
For current version visit heperlighting.com. All
flux ($\pm 7\%$ tolerance) and power values ($\pm 10\%$
tolerance) are derived following appropriate IES,
CIE, and applicable standards.

DPC

Double powder
coating

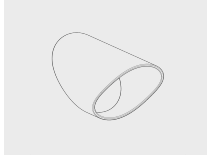
Accessories (To be ordered separately)

Mounting accessories



**DALI & On/Off
driver within an
IP67 box for
SPARK Duo**
007502122

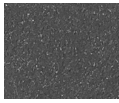
Optical accessories



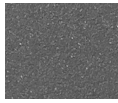
Snoot for SPARK
101652202



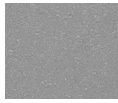
[HM1]
Black



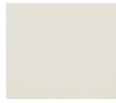
[HM2]
Dark grey



[HM3]
Anthracite
grey



[HM4]
Light grey



[HM5]
White



[HM6]
Bronze



[CC]
Custom
colour
(Please
specify RAL
code)