

PINA W

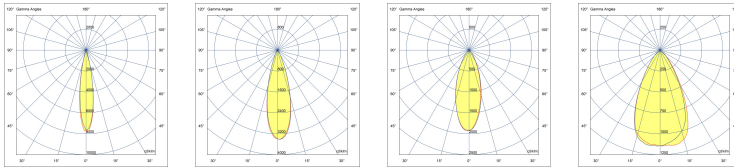
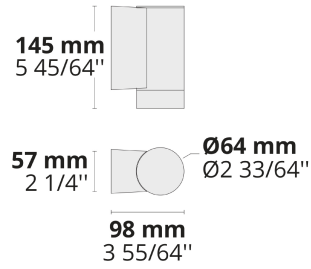
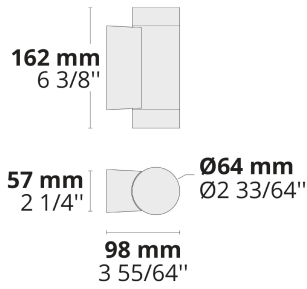
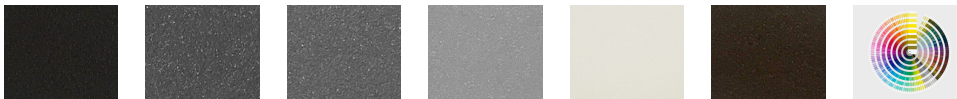
Simple and Functional Product Family



Small form factor and flexible optics make PINA W stand out to highlight architectural details in modern projects.

- Equipped with GU10 LED light source
- 4 different light distribution options from very narrow to wide
- Easy installation and maintenance

Product code	Product name	Light distribution	Delivered lumens flux	Rated input power	Color temperature	Control	Weight
LW8033.003-US	PINA W Duo	[VN] 10°, [N] 25°, [MN] 36°, [M] 60°	735 - 820 lm	15 W	2700 K CRI 90, 3000 K CRI 90, 4000 K CRI 90	On/Off, Phase dimming	0.9 lbs
LW8034.003-US	PINA W	[VN] 10°, [N] 25°, [MN] 36°, [M] 60°	368 - 410 lm	7.5 W	2700 K CRI 90, 3000 K CRI 90, 4000 K CRI 90	On/Off, Phase dimming	1.5 lbs

**[VN]**Very narrow -
NEMA Type 1**[N]**Narrow - NEMA
Type 2**[MN]**Medium narrow -
NEMA Type 3**[M]**Medium - NEMA
Type 4**[HM1]**

Black

[HM2]

Dark gray

[HM3]Anthracite
gray**[HM4]**

Light gray

[HM5]

White

[HM6]

Bronze

[CC]Custom
color
(Please
specify RAL
code)