

# IN-LIGHT

As comfortable as it gets



With MILESTONE module, IN-LIGHT offers the best visual comfort for high-bay applications.

- Equipped with HEPER's patented Milestone (ML) module
- Superior glare management with hidden light source
- Indirect lighting with reflector technology
- Uniform lighting distribution through multifaceted reflectors
- Superior thermal management with upward aligned LED chips
- Easy installation and maintenance with modular structure

Product code	Product name	Light distribution	Delivered lumens flux	Rated input power	Color temperature	Control	Weight
LW2029.672-US	IN-LIGHT ML 2 Module		5280 - 7950 lm	68 W	3000 K CRI 80, 4000 K CRI 70	On/Off, 0-10V	8.7 lbs
LW2029.674-US	IN-LIGHT ML 4 Module		10561 - 15900 lm	95 - 135 W	3000 K CRI 80, 4000 K CRI 70	On/Off, 0-10V	21.8 lbs

# Extras

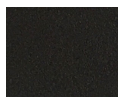
---

Luminaire body options

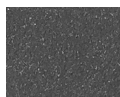


**DPC**

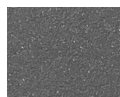
Double powder coating



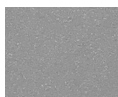
**[HM1]**  
Black



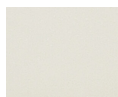
**[HM2]**  
Dark gray



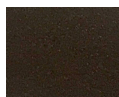
**[HM3]**  
Anthracite gray



**[HM4]**  
Light gray



**[HM5]**  
White



**[HM6]**  
Bronze



**[CC]**  
Custom color  
(Please specify RAL code)