

IN-LIGHT

As comfortable as it gets

CE UK CA IK08 IP66



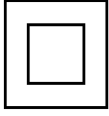
With MILESTONE module, IN-LIGHT offers the best visual comfort for high-bay applications.

- Equipped with HEPER's patented Milestone (ML) module
- Superior glare management with hidden light source
- Indirect lighting with reflector technology
- Uniform lighting distribution through multifaceted reflectors
- Superior thermal management with upward aligned LED chips
- Easy installation and maintenance with modular structure

Product code	Product name	Light distribution	Delivered lumens flux	Rated input power	Colour temperature	Control	Weight
LW2029.672-EN	IN-LIGHT ML 2 Module		5280 - 7950 lm	68 W	3000 K CRI 80, 4000 K CRI 70	On/Off, DALI, AutoDIM, StepDIM	3.98 kg
LW2029.674-EN	IN-LIGHT ML 4 Module		10561 - 15900 lm	95 - 135 W	3000 K CRI 80, 4000 K CRI 70	On/Off, DALI, AutoDIM, StepDIM	9.9 kg

Extras

Consult the factory



C2
Class II

Consult the factory

120-277V
50/60Hz

UNI
120-277V 50/60Hz

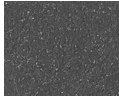
Luminaire body options

DPC

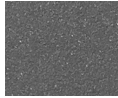
DPC
Double powder
coating



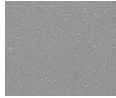
[HM1]
Black



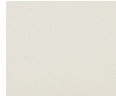
[HM2]
Dark grey



[HM3]
Anthracite
grey



[HM4]
Light grey



[HM5]
White



[HM6]
Bronze



[CC]
Custom
colour
(Please
specify RAL
code)