

DOMINO W

Robust and Scalable Product Family

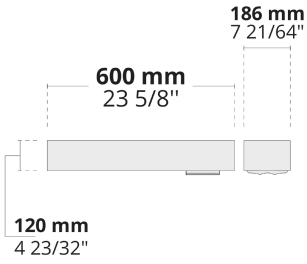


Strong characteristics, flexible optics, and modular structure make DOMINO W stand out for wall-mounted site lighting applications.

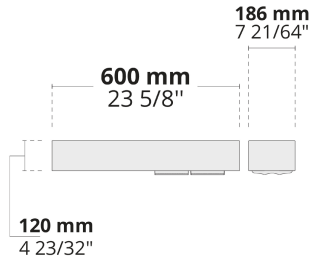
- Equipped with HEPER's patented Milestone EVO (ML EVO) or AreaFlex (AFX) module
- Minimized glare with hidden light source (ML EVO)
- Flexible optics give the ability to provide various light distributions in different output levels (AFX)
- Indirect lighting with reflector technology (ML EVO)
- Easy installation and maintenance with modular structure

Product code	Product name	Light distribution	Delivered lumens flux	Rated input power	Color temperature	Control	Weight
LW7031.681-US	DOMINO W ML EVO 1 Module	[T2] 130x85°,	2909 - 3678 lm	35 W	2700 K CRI 80, 3000 K CRI 80, 4000 K CRI 70, 4000 K CRI 80	On/Off, 0-10V	11.5 lbs
LW7031.682-US	DOMINO W ML EVO 2 Module	[T2] 130x85°,	5819 - 7357 lm	70 W	2700 K CRI 80, 3000 K CRI 80, 4000 K CRI 70, 4000 K CRI 80	On/Off, 0-10V	18 lbs
LW7031.861-US	DOMINO W AFX 1 Module	[P4] 20x78°, [T1] 111x48°, [T2] 133x48°, [T2-2] 149x54°, [T3] 143x63°, [T4] 117x64°, [T5] 117°,	1975 - 4540 lm	18 - 35 W	2700 K CRI 80, 3000 K CRI 80, 4000 K CRI 70, 4000 K CRI 80	On/Off, 0-10V	11 lbs
LW7031.862-US	DOMINO W AFX 2 Module	[P4] 20x78°, [T1] 111x48°, [T2] 133x48°, [T2-2] 149x54°, [T3] 143x63°, [T4] 117x64°, [T5] 117°,	3785 - 9085 lm	34 - 67 W	2700 K CRI 80, 3000 K CRI 80, 4000 K CRI 70, 4000 K CRI 80	On/Off, 0-10V	17.05 lbs

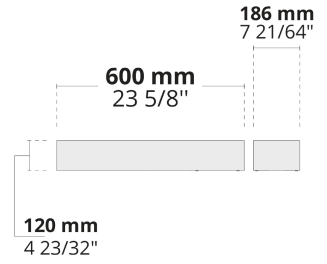
LW7031.681



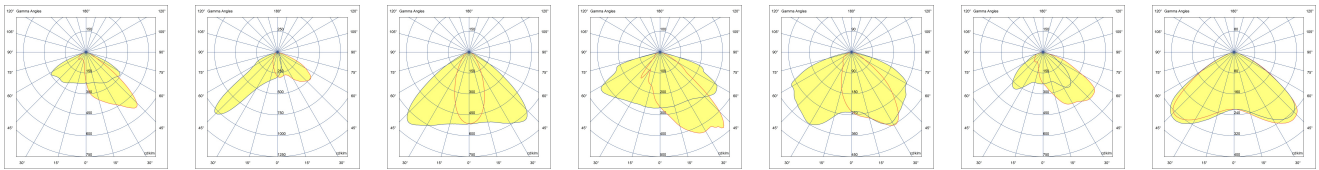
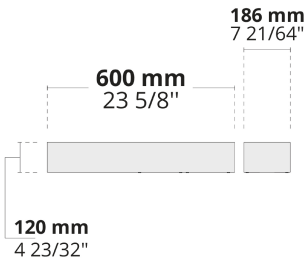
LW7031.682



LW7031.861



LW7031.862



[T2]
Type II

[P4]
Pedestrian
crosswalk
distribution

[T1]
Type I

[T2-2]
Type II

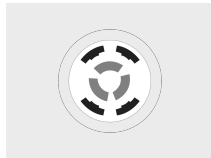
[T3]
Type III

[T4]
Type IV

[T5]
Type V

Extras

Connectivity



NM7
7 Pin NEMA socket

Consult the factory



MS
Motion sensor

Luminaire body options



DPC
Double powder
coating

