

# DOGO

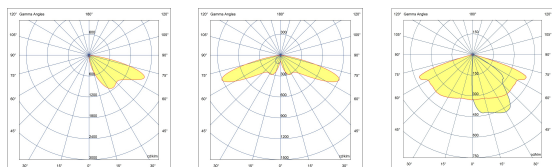
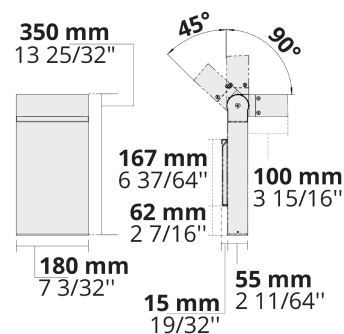
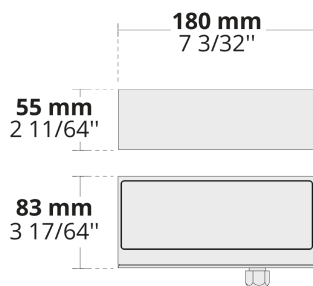
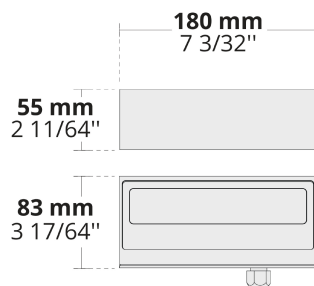
Small and Unique Product Family



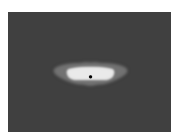
Minimalistic design, small form factor, and jaw-dropping optics make the DOGO family stand out for the illumination tasks of contemporary architectural projects.

- 1 to 6 light distribution ratio (DYN)
- Equipped with HEPER's Dyno (DYN) module or high efficiency LED chips with flexible lens optics
- Minimized glare with hidden light source
- Indirect lighting with reflector technology
- Optimized linear forward or side throw options with full cut-off and minimized stray light
- Motion sensor & emergency kit options

Product code	Product name	Light distribution	Delivered lumens flux	Rated input power	Color temperature	Control	Weight
LW6048.575-US	DOGO Forward	[SLFW] 111x53°,	805 - 2256 lm	10 - 20 W	2200 K CRI 80, 2700 K CRI 80, 3000 K CRI 80, 4000 K CRI 70, 4000 K CRI 80	On/Off	2.5 lbs
LW6048.585-US	DOGO Side	[SLSW] 154x55°,	402 - 1170 lm	5 - 10 W	2200 K CRI 80, 2700 K CRI 80, 3000 K CRI 80, 4000 K CRI 70, 4000 K CRI 80	On/Off	2.5 lbs
LW6048.910-US	DOGO 8 LED	[T3] 144x57°,	709 - 808 lm	9.5 W	2700 K CRI 80, 3000 K CRI 80, 4000 K CRI 70, 4000 K CRI 80	On/Off, 0-10V	2.5 lbs



**[SLFW]**  
Special linear,  
Forward throw



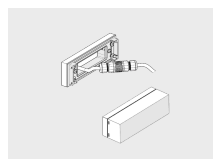
**[SLSW]**  
Special linear,  
Side throw



**[T3]**  
Type III

## Extras

### Mounting options



**ESMA**  
Extra surface  
mounting adaptor for  
a flat wall

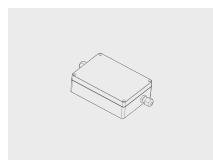
### Luminaire body options



**DPC**  
Double powder  
coating

## Accessories (To be ordered separately)

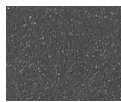
### Mounting accessories



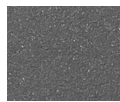
**DALI driver within  
an IP67 box for  
DOGO**  
007502840



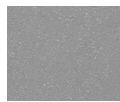
**[HM1]**  
Black



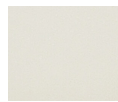
**[HM2]**  
Dark gray



**[HM3]**  
Anthracite  
gray



**[HM4]**  
Light gray



**[HM5]**  
White



**[HM6]**  
Bronze



**[CC]**  
Custom  
color  
(Please  
specify RAL  
code)