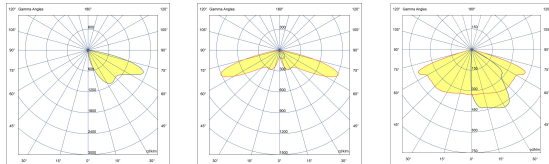
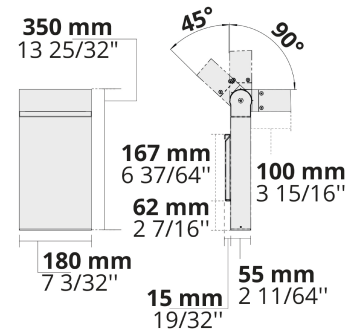
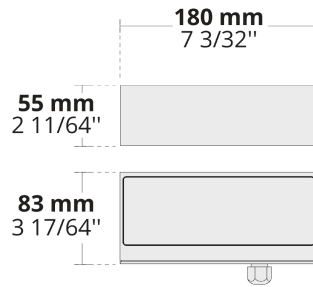
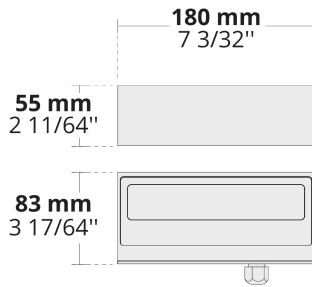




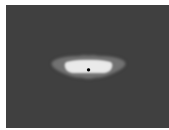
Minimalistic design, small form factor, and jaw-dropping optics make the DOGO family stand out for the illumination tasks of contemporary architectural projects.

- 1 to 6 light distribution ratio (DYN)
- Equipped with HEPER's Dyno (DYN) module or high efficiency LED chips with flexible lens optics
- Minimized glare with hidden light source
- Indirect lighting with reflector technology
- Optimized linear forward or side throw options with full cut-off and minimized stray light
- Motion sensor & emergency kit options

Product code	Product name	Light distribution	Delivered lumens flux	Rated input power	Colour temperature	Control	Weight
LW6048.575-EN	DOGO Forward	[SLFW] 111x53°	805 - 2256 lm	10 - 20 W	2200 K CRI 80, 2700 K CRI 80, 3000 K CRI 80, 4000 K CRI 70, 4000 K CRI 80	On/Off	1.1 kg
LW6048.585-EN	DOGO Side	[SLSW] 154x55°	402 - 1170 lm	5 - 10 W	2200 K CRI 80, 2700 K CRI 80, 3000 K CRI 80, 4000 K CRI 70, 4000 K CRI 80	On/Off	1.1 kg
LW6048.910-EN	DOGO 8 LED	[T3] 144x57°	709 - 808 lm	9.5 W	2700 K CRI 80, 3000 K CRI 80, 4000 K CRI 70, 4000 K CRI 80	On/Off	1.1 kg
LW7035.575-EN	DOGO Ex Forward	[SLFW] 111x53°	805 - 2256 lm	10 - 20 W	2200 K CRI 80, 2700 K CRI 80, 3000 K CRI 80, 4000 K CRI 70, 4000 K CRI 80	On/Off, DALI	5.1 kg
LW7035.585-EN	DOGO Ex Side	[SLSW] 154x55°	496 - 1170 lm	5 - 10 W	2200 K CRI 80, 2700 K CRI 80, 3000 K CRI 80, 4000 K CRI 70, 4000 K CRI 80	On/Off, DALI	5.1 kg



[SLFW]
Special linear,
Forward throw



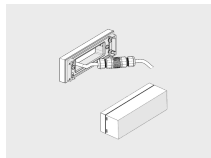
[SLSW]
Special linear,
Side throw



[T3]
Type III,
Asymmetric,
Side throw

Extras

Mounting options



ESMA
Extra surface
mounting adaptor for
a flat wall

Consult the factory

120-277V
50/60Hz

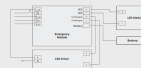
UNI
120-277V 50/60Hz

Luminaire body options

DPC

DPC
Double powder
coating

Consult the factory



EK
Emergency kit

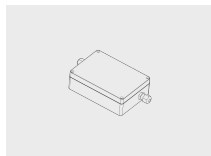
Consult the factory



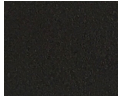
MS
Motion sensor

Accessories (To be ordered separately)

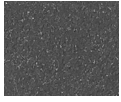
Mounting accessories



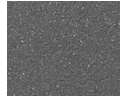
**DALI driver within
an IP67 box for
DOGO**
007502840



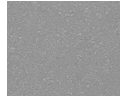
[HM1]
Black



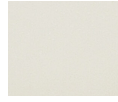
[HM2]
Dark grey



[HM3]
Anthracite
grey



[HM4]
Light grey



[HM5]
White



[HM6]
Bronze



[CC]
Custom
colour
(Please
specify RAL
code)