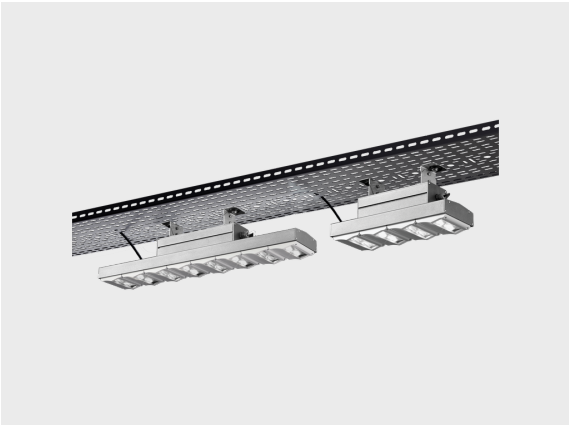


# T-LIGHT

All in one for a tunnel



Making it possible to have counter-beam, pro-beam and symmetrical light distribution all in one fixture!

- Equipped with HEPER's patented Milestone (ML) module
- Superior glare management with hidden light source
- Indirect lighting with reflector technology
- Uniform lighting distribution through multifaceted reflectors
- Superior thermal management with upward aligned LED chips
- Easy installation and maintenance with modular structure

Product code	Product name	Light distribution	Delivered lumens flux	Rated input power	Color temperature	Control	Weight
LT2029.651-US	T-LIGHT ML 4 CB Module		7554 - 8122 lm	70 W	3000 K CRI 80, 4000 K CRI 70	On/Off, 0-10V	12.4 lbs
LT2029.652-US	T-LIGHT ML 8 CB Module		15104 - 15900 lm	135 W	3000 K CRI 80, 4000 K CRI 70	On/Off, 0-10V	27.4 lbs
LT2029.653-US	T-LIGHT ML 12 CB Module		22656 - 24360 lm	210 W	3000 K CRI 80, 4000 K CRI 70	On/Off, 0-10V	34.1 lbs
LT2029.672-US	T-LIGHT ML 2 Module		7394 - 8120 lm	68 W	3000 K CRI 80, 4000 K CRI 70	On/Off, 0-10V	8.7 lbs
LT2029.674-US	T-LIGHT ML 4 Module		14788 - 15900 lm	135 W	3000 K CRI 80, 4000 K CRI 70	On/Off, 0-10V	16 lbs

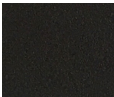
Extras

Luminaire body options

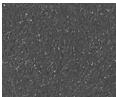


DPC

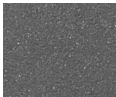
Double powder  
coating



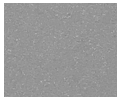
[HM1]  
Black



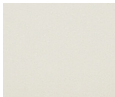
[HM2]  
Dark gray



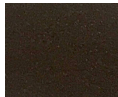
[HM3]  
Anthracite  
gray



[HM4]  
Light gray



[HM5]  
White



[HM6]  
Bronze



[CC]  
Custom  
color  
(Please  
specify RAL  
code)