

SOLE

Simplistic yet efficient



PHASED-
OUT

Using HEPER's MILESTONE module, SOLE is a luminaire you cannot go wrong with for general lighting applications.

- Equipped with HEPER's patented Milestone EVO (ML EVO) module
- Superior glare management with hidden light source
- Indirect lighting with reflector technology
- Uniform lighting distribution through multifaceted reflectors
- Superior thermal management with upward aligned LED chips
- Easy installation and maintenance with modular structure

Product code	Product name	Light distribution	Delivered lumens flux	Rated input power	Color temperature	Control	Weight
LS0002.681-US	SOLE ML EVO 1 Module		3776 - 4060 lm	35 W	3000 K CRI 80, 4000 K CRI 70	On/Off, 0-10V	13 lbs
LS0002.682-US	SOLE ML EVO 2 Module		7552 - 8120 lm	68 W	3000 K CRI 80, 4000 K CRI 70	On/Off, 0-10V	14.5 lbs

Extras

External surge protection

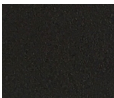


SP10
10 kV

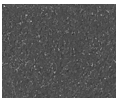
Luminaire body options



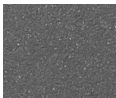
DPC
Double powder coating



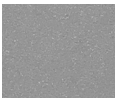
[HM1]
Black



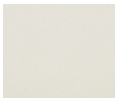
[HM2]
Dark gray



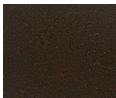
[HM3]
Anthracite gray



[HM4]
Light gray



[HM5]
White



[HM6]
Bronze



[CC]
Custom color
(Please specify RAL code)