

SOLE

Simplistic yet efficient

CE UK CA IK08 IP66 



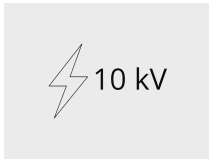
Using HEPER's MILESTONE module, SOLE is a luminaire you cannot go wrong with for general lighting applications.

- Equipped with HEPER's patented Milestone EVO (ML EVO) module
- Superior glare management with hidden light source
- Indirect lighting with reflector technology
- Uniform lighting distribution through multifaceted reflectors
- Superior thermal management with upward aligned LED chips
- Easy installation and maintenance with modular structure

Product code	Product name	Light distribution	Delivered lumens flux	Rated input power	Colour temperature	Control	Weight
LS0002.681-EN	SOLE ML EVO 1 Module		3697 - 3975 lm	35 W	3000 K CRI 80, 4000 K CRI 70	On/Off, DALI	6 kg
LS0002.682-EN	SOLE ML EVO 2 Module		7394 - 7950 lm	68 W	3000 K CRI 80, 4000 K CRI 70	On/Off, DALI	6.65 kg

Extras

External surge protection



SP10
10 kV

Consult the factory

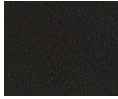


UNI
120-277V 50/60Hz

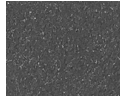
Luminaire body options



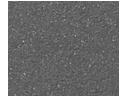
DPC
Double powder coating



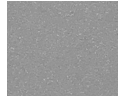
[HM1]
Black



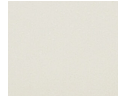
[HM2]
Dark grey



[HM3]
Anthracite grey



[HM4]
Light grey



[HM5]
White



[HM6]
Bronze



[CC]
Custom colour
(Please specify RAL code)