

TERRA

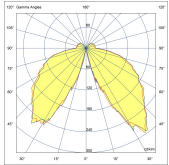
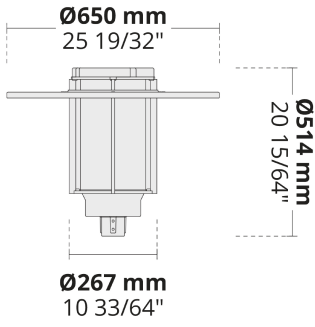
High-performing Pole-top Family with Familiar Design



Traditional yet contemporary looks combined with reliable optics make TERRA stand out for the illumination tasks for modern cities, parks, and other open spaces.

- Equipped with long-lasting high-power LEDs
- Minimized glare with top diffused glass
- Uniform lighting distribution with symmetric and asymmetric options
- Easy installation and maintenance

| Product code | Product name | Light distribution | Delivered lumens flux | Rated input power | Color temperature | Control | Weight |
|---------------|--------------|--------------------|-----------------------|-------------------|--|---------------|----------|
| LP4024.537-US | TERRA Asym | | 2366 - 2808 lm | 28 W | 2700 K CRI 80, 3000 K CRI 80, 4000 K CRI 70, 4000 K CRI 80 | On/Off, 0-10V | 15.4 lbs |
| LP4024.539-US | TERRA | [SYM-LE] 133° | 4733 - 5613 lm | 52 W | 2700 K CRI 80, 3000 K CRI 80, 4000 K CRI 70, 4000 K CRI 80 | On/Off, 0-10V | 15.5 lbs |



[SYM-LE]
Symmetric,
Special effect:
Leaf

Extras

External surge protection



SP10
10 kV

Luminaire body options



DPC
Double powder coating

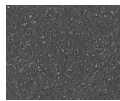
Light output



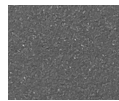
CLO
Constant light output



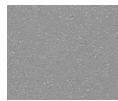
[HM1]
Black



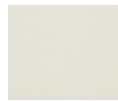
[HM2]
Dark gray



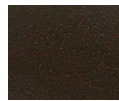
[HM3]
Anthracite gray



[HM4]
Light gray



[HM5]
White



[HM6]
Bronze



[CC]
Custom color
(Please specify RAL code)