


# TERRA

High-performing Pole-top Family with Familiar Design

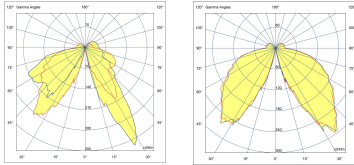
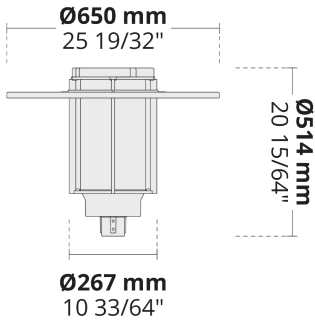
CE UK CA IK07 IP65 



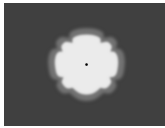
Traditional yet contemporary looks combined with reliable optics make TERRA stand out for the illumination tasks for modern cities, parks, and other open spaces.

- Equipped with long-lasting high-power LEDs
- Minimized glare with top diffused glass
- Uniform lighting distribution with symmetric and asymmetric options
- Easy installation and maintenance

Product code	Product name	Light distribution	Delivered lumens flux	Rated input power	Colour temperature	Control	Weight
LP4024.537-EN	TERRA Asym	[ASYM-LE] 107x109°	2366 - 2808 lm	28 W	2700 K CRI 80, 3000 K CRI 80, 4000 K CRI 70, 4000 K CRI 80	On/Off, DALI, AutoDIM, StepDIM	7.02 kg
LP4024.539-EN	TERRA	[SYM-LE] 133°	4733 - 5613 lm	52 W	2700 K CRI 80, 3000 K CRI 80, 4000 K CRI 70, 4000 K CRI 80	On/Off, DALI, AutoDIM, StepDIM	7.12 kg



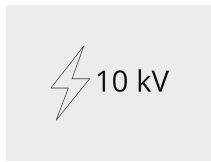
**[ASYM-LE]**  
Asymmetric,  
Special effect:  
Leaf



**[SYM-LE]**  
Symmetric,  
Special effect:  
Leaf

## Extras

External surge protection



**SP10**  
10 kV

Light output



**CLO**  
Constant light output

Consult the factory



**UNI**  
120-277V 50/60Hz

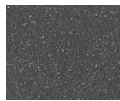
Luminaire body options



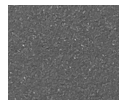
**DPC**  
Double powder coating



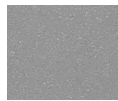
**[HM1]**  
Black



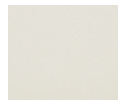
**[HM2]**  
Dark grey



**[HM3]**  
Anthracite grey



**[HM4]**  
Light grey



**[HM5]**  
White



**[HM6]**  
Bronze



**[CC]**  
Custom colour  
(Please specify RAL code)