

PRIFMA PT

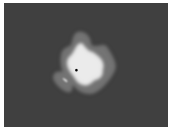
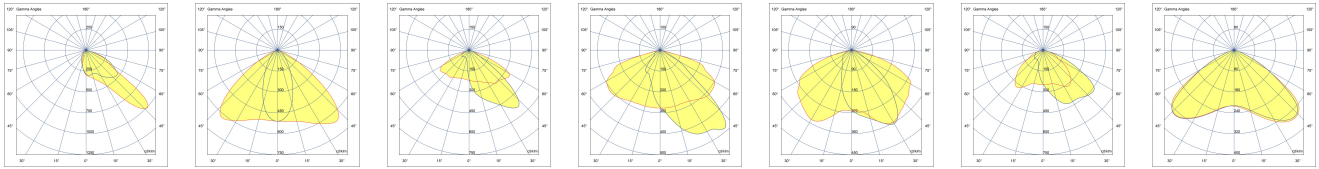
Versatile and Stylish Pole-top Family



The distinctive attributes of PRIFMA shine in contemporary architectural ventures, characterized by its streamlined design, adaptable optical features, and modular framework. These elements combine to set PRIFMA apart as an exceptional choice.

- Equipped with HEPER's AreaFlex (AFX) module
- Flexible light distribution options from Type I through Type V (AFX)
- Double layout configuration for further flexibility
- Easy installation and maintenance with modular structure

Product code	Product name	Light distribution	Delivered lumens flux	Rated input power	Colour temperature	Control	Weight
LP2046.861-EN	PRIFMA PT AFX 1 Module	[P4] 20x78°, [T1] 111x48°, [T2] 133x48°, [T2-2] 149x54°, [T3] 143x63°, [T4] 117x64°, [T5] 117°,	1975 - 4540 lm	18 - 35 W	2700 K CRI 80, 3000 K CRI 80, 4000 K CRI 70, 4000 K CRI 80	On/Off, DALI	7.4 kg
LP2046.862-EN	PRIFMA PT AFX 2 Module	[P4] 20x78°, [T1] 111x48°, [T2] 133x48°, [T2-2] 149x54°, [T3] 143x63°, [T4] 117x64°, [T5] 117°,	3785 - 9085 lm	34 - 67 W	2700 K CRI 80, 3000 K CRI 80, 4000 K CRI 70, 4000 K CRI 80	On/Off, DALI	9 kg
LP2046.863-EN	PRIFMA PT AFX 3 Module	[P4] 20x78°, [T1] 111x48°, [T2] 133x48°, [T2-2] 149x54°, [T3] 143x63°, [T4] 117x64°, [T5] 117°,	5675 - 13800 lm	50 - 100 W	2700 K CRI 80, 3000 K CRI 80, 4000 K CRI 70, 4000 K CRI 80	On/Off, DALI	10.8 kg



[P4]

Special pedestrian road distribution-right side traffic

[T1]

Type I, Asymmetric, Side throw

[T2]

Type II, Asymmetric, Side throw

[T2-2]

Type II, Asymmetric, Side throw

[T3]

Type III, Asymmetric, Side throw

[T4]

Type IV, Asymmetric, Forward throw

[T5]

Type V, Symmetric

Extras

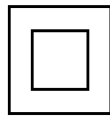
Light output



CLO

CLO
Constant light output

Consult the factory



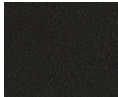
C2
Class II

Consult the factory

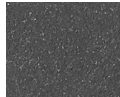


120-277V
50/60Hz

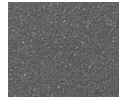
UNI
120-277V 50/60Hz



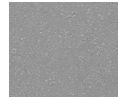
[HM1]
Black



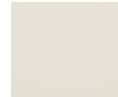
[HM2]
Dark grey



[HM3]
Anthracite grey



[HM4]
Light grey



[HM5]
White



[HM6]
Bronze



[CC]
Custom colour
(Please specify RAL code)