

VERTEX

Functional and Sleek Light Column Family

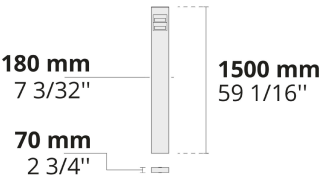


VERTEX provides uniform light distribution with unique reflector technology and glare reduction with hidden light source.

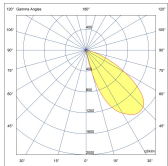
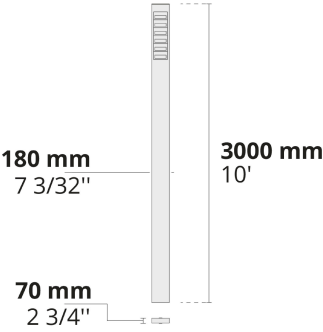
- Equipped with HEPER's Dyno (DYN) module
- Superior glare management with hidden light source
- Uniform light distribution with advanced reflector technology
- Different height options and matching bollard to complement high-end architectural projects
- Minimalistic design to blend in with different types of architecture
- Modular structure allowing seamless integration

Product code	Product name	Light distribution	Delivered lumens flux	Rated input power	Color temperature	Control	Weight
LB6064.592-US	VERTEX 2 Module	[SLFB] 144x41°	846 - 945 lm	15 W	2700 K CRI 80, 3000 K CRI 80, 4000 K CRI 70, 4000 K CRI 80	On/Off, 0-10V	23.9 lbs
LB6064.596-US	VERTEX 6 Module	[SLFB] 144x41°	2538 - 2700 lm	45 W	2700 K CRI 80, 3000 K CRI 80, 4000 K CRI 80	On/Off, 0-10V	49.6 lbs

LB6064.592



LB6064.596

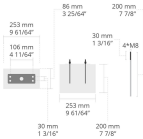


[SLFB]

Special linear,
Forward throw

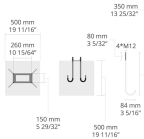
Accessories (To be ordered separately)

Anchor bolts

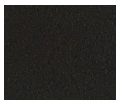


628I005
628I005

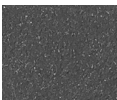
Anchor bolts



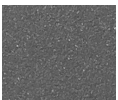
625J013
625J013



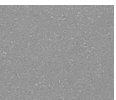
[HM1]
Black



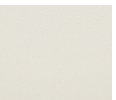
[HM2]
Dark gray



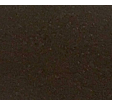
[HM3]
Anthracite
gray



[HM4]
Light gray



[HM5]
White



[HM6]
Bronze



[CC]
Custom
color
(Please
specify RAL
code)