



VERTEX provides uniform light distribution with unique reflector technology and glare reduction with hidden light source.

- Equipped with HEPER's Dyno (DYN) module
- Superior glare management with hidden light source
- Uniform light distribution with advanced reflector technology
- Different height options and matching bollard to complement high-end architectural projects
- Minimalistic design to blend in with different types of architecture
- Modular structure allowing seamless integration

Product code	Product name	Light distribution	Delivered lumens flux	Rated input power	Colour temperature	Control	Weight
LB6064.592-EN	VERTEX 2 Module	[SLFB] 144x41°,	846 - 945 lm	15 W	2700 K CRI 80, 3000 K CRI 80, 4000 K CRI 70, 4000 K CRI 80	On/Off, DALI	10.8 kg
LB6064.596-EN	VERTEX 6 Module	[SLFB] 144x41°,	2538 - 2700 lm	45 W	2700 K CRI 80, 3000 K CRI 80, 4000 K CRI 80	On/Off, DALI	22.5 kg

LB6064.592

LB6064.596

180 mm
7 3/32"

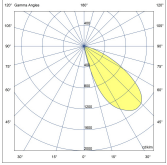
70 mm
2 3/4"

1500 mm
59 1/16"

180 mm
7 3/32"

70 mm
2 3/4"

3000 mm
10'

**[SLFB]**

Special linear,
Forward throw

Extras

Consult the factory

Luminaire body options

120-277V
50/60Hz

DPC

UNI

120-277V 50/60Hz

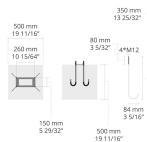
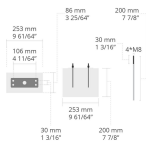
DPC

Double powder
coating

Accessories (To be ordered separately)

Anchorage

Anchorage



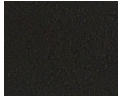
628I005
628I005

625J013
625J013

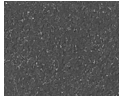
HPR Pazarlama A.Ş.
Başkent OSB 22. Cd. No: 2, Malıköy, Temelli,
Sincan, 06909 Ankara, Turkey
+90 312 267 54 30
info@hepergroup.com

HEPER Europe GmbH
Ahornweg 5a, 58675
Hemer, Germany
+49 237 2901 2975
infoEU@hepergroup.com

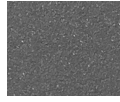
We reserve the right to change specifications without prior written notice. Edition: 01.05.2024. For current version visit heperlighting.com. All flux (±7% tolerance) and power values (±10% tolerance) are derived following appropriate IES, CIE, and applicable standards.



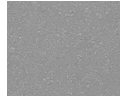
[HM1]
Black



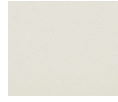
[HM2]
Dark grey



[HM3]
Anthracite
grey



[HM4]
Light grey



[HM5]
White



[HM6]
Bronze



[CC]
Custom
colour
(Please
specify RAL
code)



[WD]
Wooden