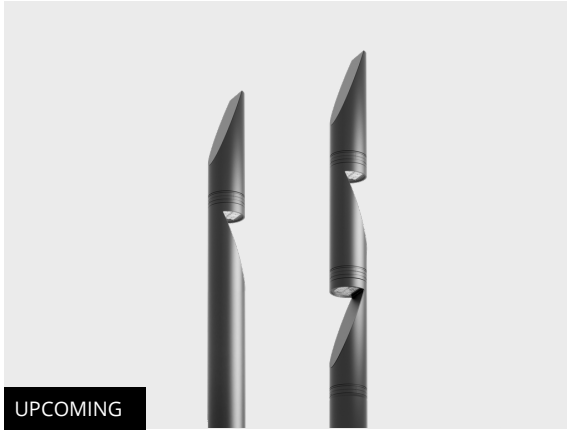


# TRIAN

Contemporary, Practical and Flexible  
Light Column Family

CE UK CA IK08 IP65



With its sleek and futuristic design; TRIAN, redefines modern aesthetics thanks to its cutting-edge lighting solution while providing unparalleled illumination. Modularity and functionality combine to bring the next evolution in lighting technology.

- Equipped with HEPER's AreaFlex (AFX) module
- Double layout configuration for further flexibility
- Easy installation and maintenance with modular structure
- Modular structure allowing seamless integration

Product code	Product name	Light distribution	Delivered lumens flux	Rated input power	Colour temperature	Control	Weight
LL6020.895-EN	TRIAN L AFX Mini	[T2-2] 134x52°, [T3] 131x60°	1695 - 3633 lm	12 - 26 W	2200 K CRI 80, 2700 K CRI 80, 3000 K CRI 80, 4000 K CRI 70	On/Off, DALI, AutoDIM, StepDIM	48.5kg(4m) , 56.2kg(6m) , 64kg(6m)
LL6021.895-EN	TRIAN L AFX Mini Duo	[T2-2] 134x52°, [T3] 131x60°	3390 - 7266 lm	24 - 52 W	2200 K CRI 80, 2700 K CRI 80, 3000 K CRI 80, 4000 K CRI 70	On/Off, DALI, AutoDIM, StepDIM	53kg(4m) , 60.8kg(5m) , 68.6kg(6m)

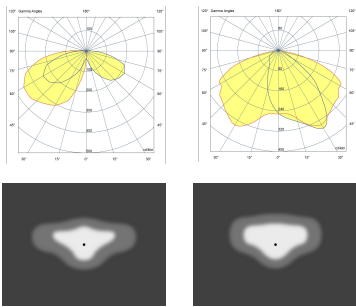
## HPR Pazarlama A.Ş.

Başkent OSB 22. Cd. No: 2, Malıköy, Temelli,  
Sincan, 06909 Ankara, Turkey  
+90 312 267 54 30  
info@hepergroup.com

## HEPER Europe GmbH

Ahornweg 5a, 58675  
Hemer, Germany  
+49 237 2901 2975  
infoEU@hepergroup.com

We reserve the right to change specifications without prior written notice. Edition: 18.05.2024.  
For current version visit [heperlighting.com](http://heperlighting.com). All flux (±%7 tolerance) and power values (±%10 tolerance) are derived following appropriate IES, CIE, and applicable standards.



**[T2-2]**

Type II,  
Asymmetric,  
Side throw

**[T3]**

Type III,  
Asymmetric,  
Side throw

## Extras

External surge  
protection



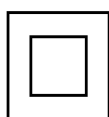
**SP10**  
10 kV

Light output



**CLO**  
Constant light output

Consult the factory



**C2**  
Class II

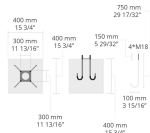
Luminaire body options



**DPC**  
Double powder  
coating

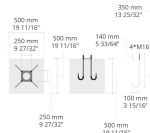
## Accessories (To be ordered separately)

Anchorage

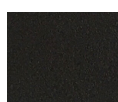


**90DJ006**  
90DJ006

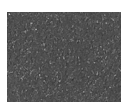
Anchorage



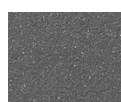
**90CJ004**  
90CJ004



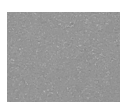
**[HM1]**  
Black



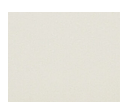
**[HM2]**  
Dark grey



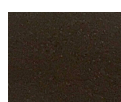
**[HM3]**  
Anthracite  
grey



**[HM4]**  
Light grey



**[HM5]**  
White



**[HM6]**  
Bronze



**[CC]**  
Custom  
colour  
(Please  
specify RAL  
code)