

TILA

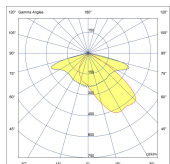
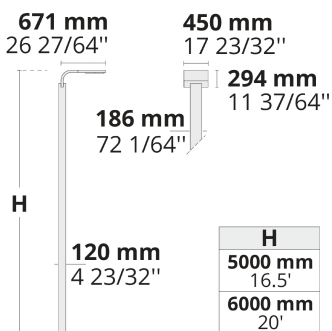
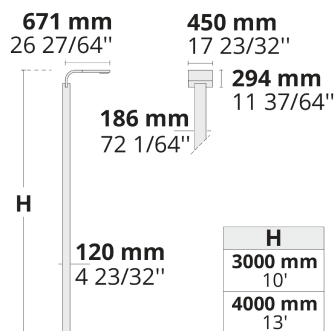
Elegant and Scalable Light Column
Family



Unique design, flexible optics, and modular structure make TILA family stand out for contemporary architectural projects.

- Equipped with HEPER's patented Milestone EVO (ML EVO) module
- Minimized glare with hidden light source (ML)
- Indirect lighting with reflector technology (ML)
- Uniform lighting distribution through multifaceted reflectors (ML)
- Superior thermal management with upward aligned LED chips (ML)
- Easy installation and maintenance with modular structure

Product code	Product name	Light distribution	Delivered lumens flux	Rated input power	Color temperature	Control	Weight
LL2013.682-US	TILA ML EVO 2 Module	[T2] 130x85°,	5819 - 7357 lm	70 W	2700 K CRI 80, 3000 K CRI 80, 4000 K CRI 70, 4000 K CRI 80	On/Off, 0-10V	133.07 lbs (10'), 144.32 lbs (13')
LL2013.684-US	TILA ML EVO 4 Module	[T2] 130x85°,	11643 - 14714 lm	136 W	2700 K CRI 80, 3000 K CRI 80, 4000 K CRI 70, 4000 K CRI 80	On/Off, 0-10V	156.88 lbs (16.5'), 168.1 lbs (20')



[T2]
Type II

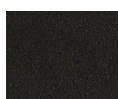
Extras

Luminaire body options

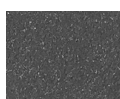
DPC

DPC

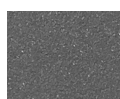
Double powder
coating



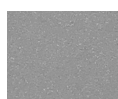
[HM1]
Black



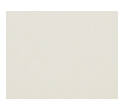
[HM2]
Dark gray



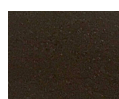
[HM3]
Anthracite
gray



[HM4]
Light gray



[HM5]
White



[HM6]
Bronze



[CC]
Custom
color
(Please
specify RAL
code)