

# RHINO

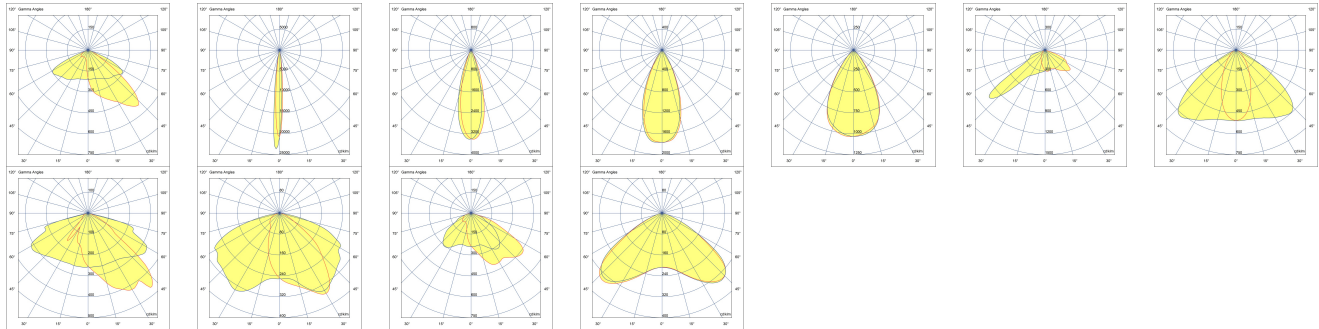
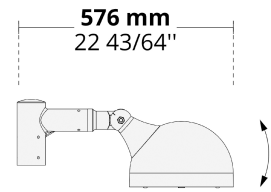
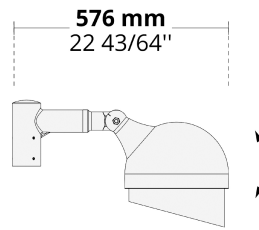
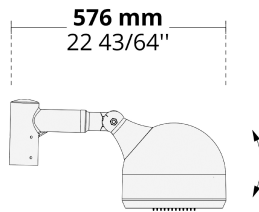
## Flexible and Versatile Pole-mount Family



With flexible mounting options and different optics, RHINO stands out as an option for area and architectural lighting applications.

- Equipped with HEPER's patented Milestone (ML), AreaFlex (AFX) or Hybrid (HYB) module
- Minimized glare with hidden light source (ML)
- Flexible light distribution options from Type I through Type V (AFX)
- Options for different type of optics
- Indirect lighting with reflector technology (ML)
- Uniform lighting distribution through multifaceted reflectors (ML)
- Angle-adjustable head
- Approved by the DarkSky International (AFX).
- Flexible for various types of uses
- Easy installation and maintenance with modular structure

Product code	Product name	Light distribution	Delivered lumens flux	Rated input power	Color temperature	Control	Weight
LL2028.671-US	RHINO ML 1 Module	[T2] 130x85°,	2909 - 3678 lm	35 W	2700 K CRI 80, 3000 K CRI 80, 4000 K CRI 70, 4000 K CRI 80	On/Off, 0-10V	15.7 lbs
LL2028.694-US	RHINO Floodlight	[S] 7°, [N] 26°, [MN] 42°, [M] 60°,	1008 - 2981 lm	14 - 27 W	2700 K CRI 80, 3000 K CRI 80, 4000 K CRI 70, 4000 K CRI 80	On/Off, 0-10V	15.7 lbs
LL2028.861-US	RHINO AFX 1 Module	[P4] 20x78°, [T1] 111x48°, [T2] 133x48°, [T2-2] 149x54°, [T3] 143x63°, [T4] 117x64°, [T5] 117°,	1975 - 4540 lm	18 - 35 W	2700 K CRI 80, 3000 K CRI 80, 4000 K CRI 70, 4000 K CRI 80	On/Off, 0-10V	15.7 lbs



**[T2]**  
Type II



**[S]**  
Spot - NEMA  
Type 0



**[N]**  
Narrow - NEMA  
Type 2



**[MN]**  
Medium narrow -  
NEMA Type 3



**[M]**  
Medium - NEMA  
Type 4



**[P4]**  
Pedestrian  
crosswalk  
distribution



**[T1]**  
Type I



**[T2-2]**  
Type II



**[T3]**  
Type III



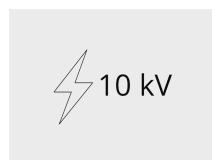
**[T4]**  
Type IV



**[T5]**  
Type V

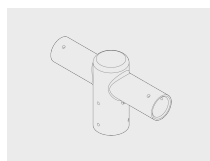
## Extras

External surge  
protection



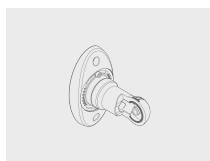
**SP10**  
10 kV

Mounting options



**DMBA**  
Double side-mount  
bracket

Mounting options



**SMBA**  
Side-mount bracket  
allowing +/-45°  
rotation

Mounting options



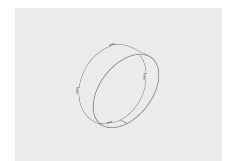
**TMBA**  
Top-mount bracket

Luminaire body options



**DPC**  
Double powder  
coating

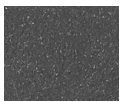
Light output



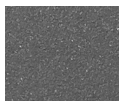
**VS**  
Visor for RHINO



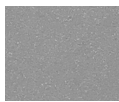
**[HM1]**  
Black



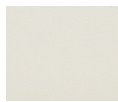
**[HM2]**  
Dark gray



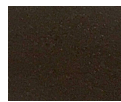
**[HM3]**  
Anthracite  
gray



**[HM4]**  
Light gray



**[HM5]**  
White



**[HM6]**  
Bronze



**[CC]**  
Custom  
color  
(Please  
specify RAL  
code)