

# L&C LUMINAIRE

Modular Pole-top Family with Futuristic Looks

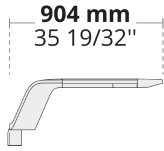


Developed jointly with BMW, LC Luminaire stands out for area and street lighting applications for modern cities.

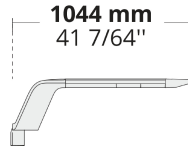
- Equipped with HEPER's patented Milestone EVO (ML EVO) module
- Minimized glare with hidden light source (ML EVO)
- Indirect lighting with reflector technology (ML EVO)
- Uniform light distribution with specially designed reflectors
- Auto on-off switch during maintenance
- Easy installation and maintenance with modular structure
- Tool-less access to housing

Product code	Product name	Light distribution	Delivered lumens flux	Rated input power	Color temperature	Control	Weight
LL2016.661-US	L&C LUMINAIRE 1 Module	[T2] 130x85°	2945 - 3563 lm	35 W	3000 K CRI 70, 3000 K CRI 80, 4000 K CRI 70	On/Off, 0-10V	15 lbs
LL2016.662-US	L&C LUMINAIRE 2 Module	[T2] 130x85°	5891 - 7127 lm	68 W	3000 K CRI 70, 3000 K CRI 80, 4000 K CRI 70	On/Off, 0-10V	16.5 lbs
LL2016.663-US	L&C LUMINAIRE 3 Module	[T2] 130x85°	8837 - 10691 lm	101 W	3000 K CRI 70, 3000 K CRI 80, 4000 K CRI 70	On/Off, 0-10V	18.5 lbs
LL2016.664-US	L&C LUMINAIRE 4 Module	[T2] 130x85°	11783 - 14255 lm	137 W	3000 K CRI 70, 3000 K CRI 80, 4000 K CRI 70	On/Off, 0-10V	20.7 lbs
LL2017.661-US	L&C LUMINAIRE L 1 Module	[T2] 130x85°	2945 - 3563 lm	35 W	3000 K CRI 70, 3000 K CRI 80, 4000 K CRI 70	On/Off, 0-10V	16 lbs
LL2017.662-US	L&C LUMINAIRE L 2 Module	[T2] 130x85°	5891 - 7127 lm	68 W	3000 K CRI 70, 3000 K CRI 80, 4000 K CRI 70	On/Off, 0-10V	18 lbs
LL2017.663-US	L&C LUMINAIRE L 3 Module	[T2] 130x85°	8837 - 10691 lm	101 W	3000 K CRI 70, 3000 K CRI 80, 4000 K CRI 70	On/Off, 0-10V	20 lbs
LL2017.664-US	L&C LUMINAIRE L 4 Module	[T2] 130x85°	11783 - 14255 lm	137 W	3000 K CRI 70, 3000 K CRI 80, 4000 K CRI 70	On/Off, 0-10V	21.8 lbs

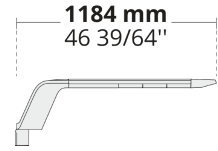
LL2016.661



LL2016.662



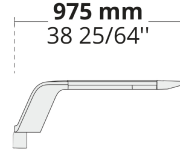
LL2016.663



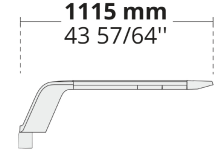
LL2016.664



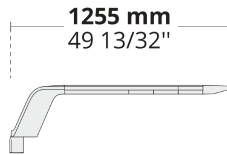
LL2017.661



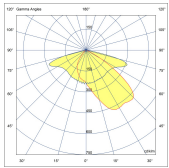
LL2017.662



LL2017.663



LL2017.664



[T2]  
Type II

## Extras

External surge protection



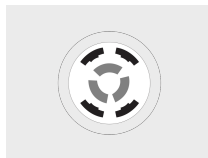
**SP10**  
10 kV

Luminaire body options

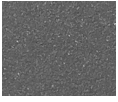


**DPC**  
Double powder coating

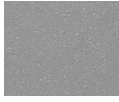
Connectivity



**NM7**  
7 Pin NEMA socket



**[HM3]**  
Anthracite  
gray



**[HM4]**  
Light gray



**[CC]**  
Custom  
color  
(Please  
specify RAL  
code)