

D-LIGHT V2

Technologically Advanced and
Modular Pole-top Fixture Family

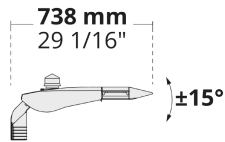


Precise light distribution, modular assembly structure, and flexible optics make D-LIGHT V2 stand out for area and street lighting applications.

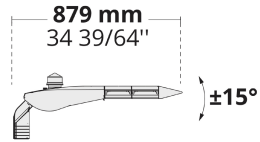
- Equipped with HEPER's patented Milestone EVO (ML EVO) module
- Superior glare management with hidden light source
- Indirect lighting with reflector technology
- Uniform lighting distribution through multifaceted reflectors
- Auto on-off switch during maintenance
- Easy installation and maintenance with modular structure
- Tool-less access to housing

Product code	Product name	Light distribution	Delivered lumens flux	Rated input power	Color temperature	Control	Weight
LL2034.681-US	D-LIGHT ML EVO 1 Module	[T2] 130x85°,	2945 - 3563 lm	35 W	3000 K CRI 70, 3000 K CRI 80, 4000 K CRI 70	On/Off, 0-10V	15 lbs
LL2034.682-US	D-LIGHT ML EVO 2 Module	[T2] 130x85°,	5891 - 7127 lm	70 W	3000 K CRI 70, 3000 K CRI 80, 4000 K CRI 70	On/Off, 0-10V	18 lbs
LL2034.683-US	D-LIGHT ML EVO 3 Module	[T2] 130x85°,	8837 - 10691 lm	104 W	3000 K CRI 70, 3000 K CRI 80, 4000 K CRI 70	On/Off, 0-10V	20.5 lbs
LL2034.684-US	D-LIGHT ML EVO 4 Module	[T2] 130x85°,	11783 - 14255 lm	136 W	3000 K CRI 70, 3000 K CRI 80, 4000 K CRI 70	On/Off, 0-10V	23.5 lbs

LL2034.681



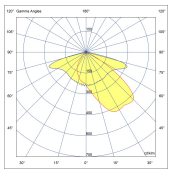
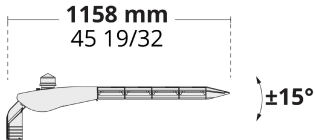
LL2034.682



LL2034.683



LL2034.684



[T2]
Type II

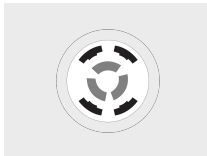
Extras

External surge
protection



SP10
10 kV

Connectivity

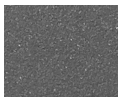


NM7
7 Pin NEMA socket

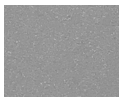
Luminaire body options



DPC
Double powder
coating



[HM3]
Anthracite
gray



[HM4]
Light gray



[CC]
Custom
color
(Please
specify RAL
code)