

D-LIGHT L

Technologically Advanced and
Modular Pole-top Fixture Family

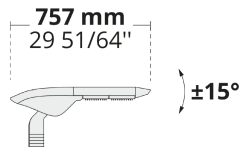


Precise light distribution, unique design, and flexible optics make D-LIGHT stand out for area and street lighting applications.

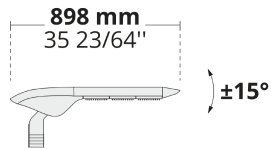
- Equipped with HEPER's patented Milestone (ML) module
- Minimized glare with hidden light source (ML)
- Indirect lighting with reflector technology
- Uniform lighting distribution through multifaceted reflectors
- Superior thermal management with upward aligned LED chips
- Auto on-off switch during maintenance
- Easy installation and maintenance with modular structure
- Tool-less access to housing

Product code	Product name	Light distribution	Delivered lumens flux	Rated input power	Color temperature	Control	Weight
LL2024.674-US	D-LIGHT L ML 4 Module	[T2] 130x85°,	11783 - 14255 lm	137 W	3000 K CRI 70, 3000 K CRI 80, 4000 K CRI 70	On/Off, 0-10V	21.5 lbs
LL2024.676-US	D-LIGHT L ML 6 Module	[T2] 130x85°,	17675 - 21382 lm	207 W	3000 K CRI 70, 3000 K CRI 80, 4000 K CRI 70	On/Off, 0-10V	25.3 lbs
LL2024.678-US	D-LIGHT L ML 8 Module	[T2] 130x85°,	23566 - 28510 lm	274 W	3000 K CRI 70, 3000 K CRI 80, 4000 K CRI 70	On/Off, 0-10V	28.6 lbs

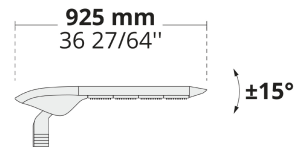
LL2024.674



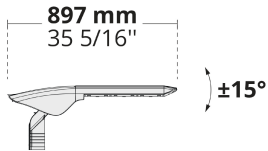
LL2024.676



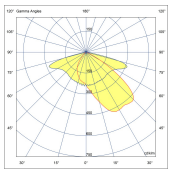
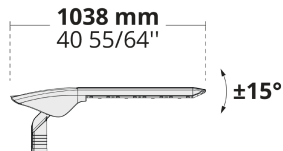
LL2024.678



LL2024.866



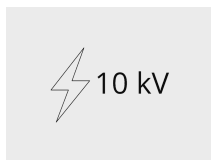
LL2024.868



[T2]
Type II

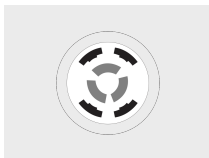
Extras

External surge
protection



SP10
10 kV

Connectivity

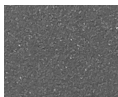


NM7
7 Pin NEMA socket

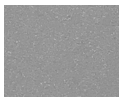
Luminaire body options



DPC
Double powder
coating



[HM3]
Anthracite
gray



[HM4]
Light gray



[CC]
Custom
color
(Please
specify RAL
code)