

HANDRA

An Extraordinary Handrail Luminaire Family

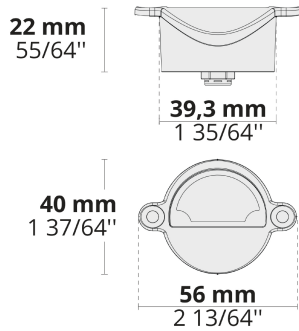


Uniform light distribution and easy installation capabilities make the HANDRA family the perfect choice for both new and retrofit handrail lighting applications.

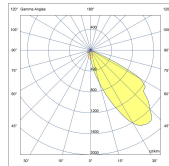
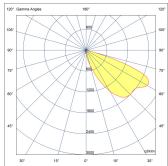
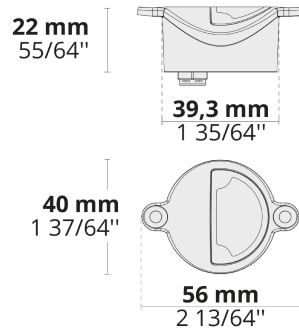
- Equipped with HEPER's Dyno (DYN) module
- Minimized glare with hidden light source
- Indirect lighting with reflector technology
- Asymmetric forward or side uniform light distribution
- Vandal resistant compact design
- Retrofit ready for standard dimension handrails
- Easy installation and maintenance with smart wiring system

Product code	Product name	Light distribution	Delivered lumens flux	Rated input power	Color temperature	Control	Weight
LH5004.595-US	HANDRA Forward - Ø2"	[SLFH] 44x46°,	87 - 100 lm	1 W	2700 K CRI 80, 3000 K CRI 80, 4000 K CRI 70, 4000 K CRI 80		0.1 lbs
LH5005.595-US	HANDRA Side - Ø2"	[SLSH] 42x54°,	40 - 48 lm	1 W	2700 K CRI 80, 3000 K CRI 80, 4000 K CRI 70, 4000 K CRI 80		0.1 lbs
LH5006.595-US	HANDRA Forward - Ø2.4"	[SLFH] 44x46°,	87 - 100 lm	1 W	2700 K CRI 80, 3000 K CRI 80, 4000 K CRI 70, 4000 K CRI 80		0.1 lbs
LH5007.595-US	HANDRA Side - Ø2.4"	[SLSH] 42x54°,	40 - 48 lm	1 W	2700 K CRI 80, 3000 K CRI 80, 4000 K CRI 70, 4000 K CRI 80		0.1 lbs

LH5004.595 / LH5006.595



LH5005.595 / LH5007.595



[SLFH]

Special linear,
Forward throw

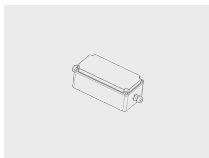


[SLSH]

Special linear,
Side throw

Accessories (To be ordered separately)

Mounting accessories



**0-10V Driver
within an IP67 box
for 1 to 6 HANDRA
modules**
007502066

Mounting accessories

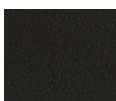


**0-10V Driver
within an IP67 box
for 7 to 15
HANDRA modules**
007502067

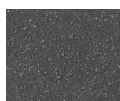
Mounting accessories



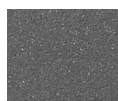
**0-10V Driver
within an IP67 box
for 16 to 35
HANDRA modules**
007502068



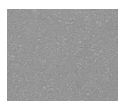
[HM1]
Black



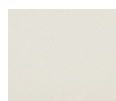
[HM2]
Dark gray



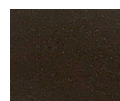
[HM3]
Anthracite
gray



[HM4]
Light gray



[HM5]
White



[HM6]
Bronze



[CC]
Custom
color
(Please
specify RAL
code)